



**Gillespie Road, N5 1LR**

Guide Price **£1,350,000**

**DAVID  
ANDREW**

your  
most  
valuable  
asset



# Gillespie Road, N5 1LR

Highbury, London

Located on a popular street in Highbury is this, four bedroom, three story family home. The accommodation comprises of a double reception and kitchen/dining room, leading on to a private south facing garden extending to 31ft. The property benefits from approximately 1473sqft/136.9sqm of living space, including four generous sized bedrooms and a family bathroom located on the first floor. This property is close to Gillespie Park, Islington's award winning nature reserve, as well as being in close proximity to Highbury Barn/ Highbury Fields with its numerous bars, restaurants and amenities. Served by excellent Zone Two transport links the house is minutes away from Arsenal Underground Station, and Finsbury Park & Highbury Islington Stations, making it an ideal property for commuters and families alike.

Council Tax band: E

Tenure: Freehold

EPC Energy Efficiency Rating: D

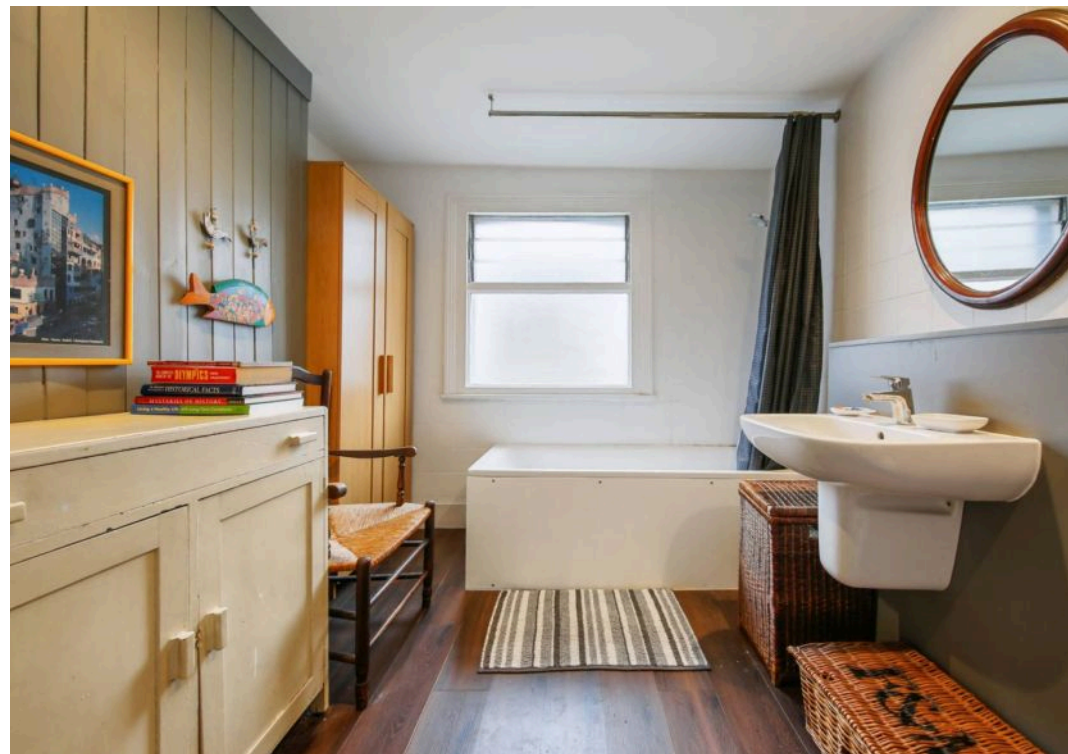
- Four Double Bedrooms
- Three Storey House
- 1473sqft/136/sqm
- South Facing Garden
- Mins walk to Clissold Park
- Mins Walk to Highbury Barn
- Great Location



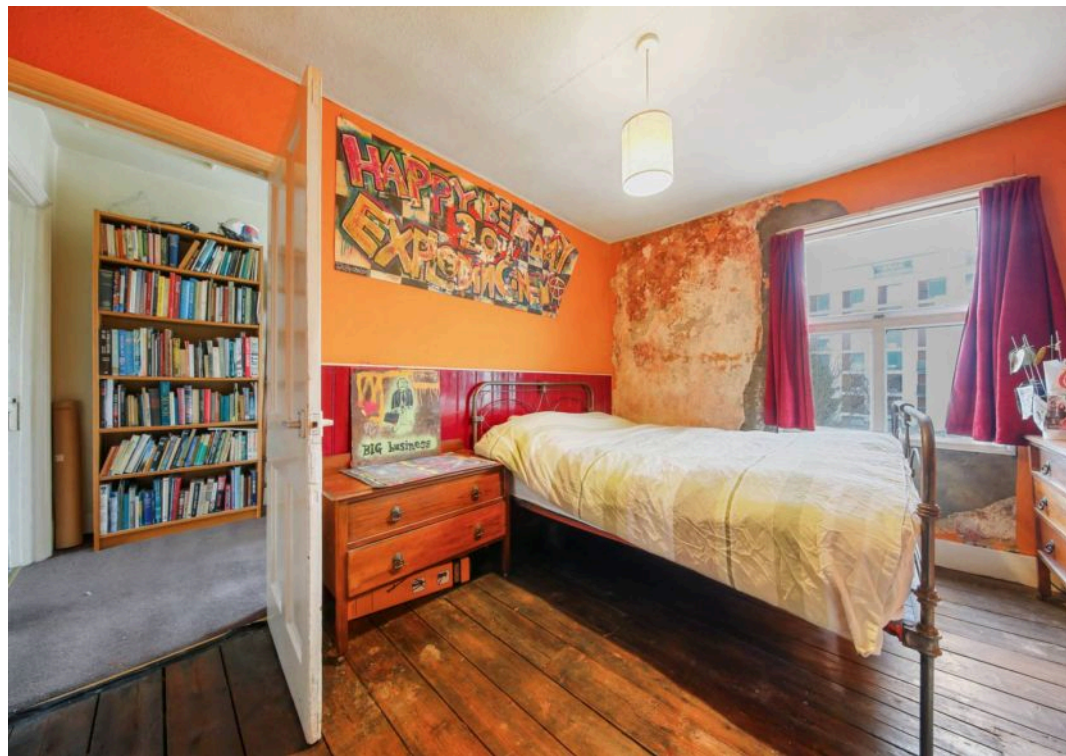
















## David Andrew Estates

90 Highbury Park, London - N5 2XE

020 7354 9111 • [highbury@davidandrew.co.uk](mailto:highbury@davidandrew.co.uk) • [www.davidandrew.co.uk/](http://www.davidandrew.co.uk/)

*scan to book  
a viewing*

