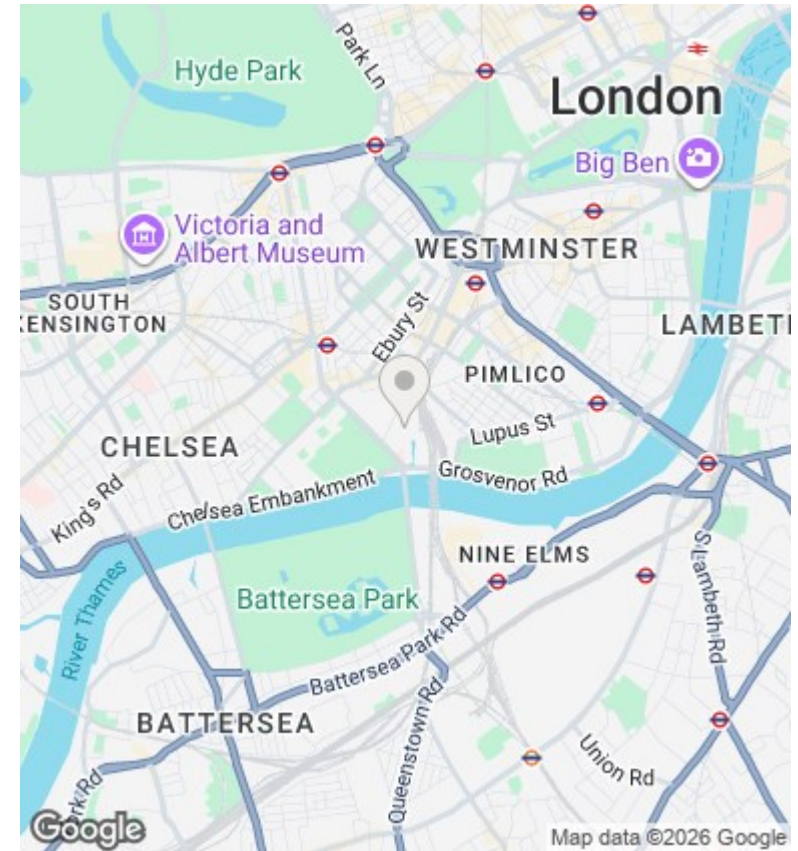
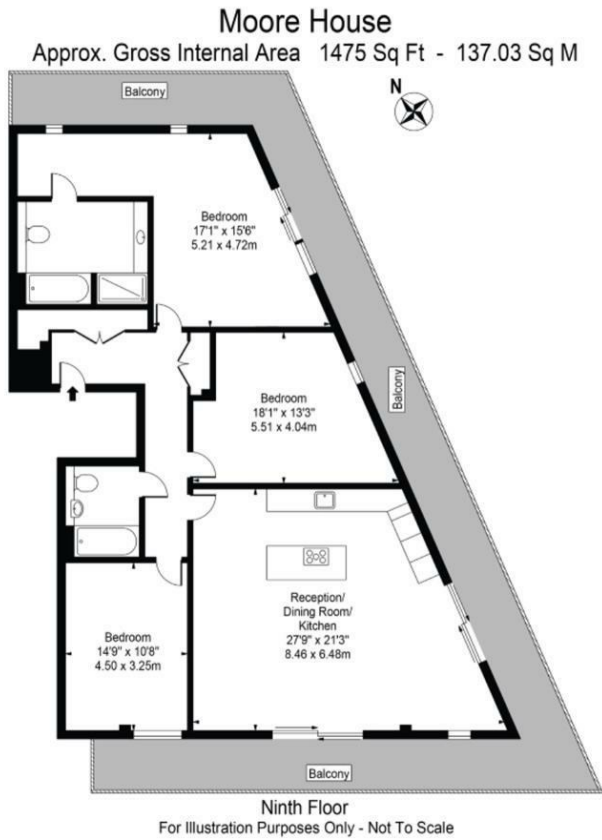




Moore House, Gatliff Road, Grosvenor Waterside, Sloane Square SW1W 8DU

£2,750,000

- 24/7 CONCIERGE
- PENTHOUSE
- 2 ALLOCATED PARKING SPACES
- VIDEO VIEWING AVAILABLE
- PRIVATE TERRACE RUNNING ALONG THE FLAT
- RESIDENCE GYM AND SPA
- 3 BEDROOMS 2 BATHROOMS
- UNDER FLOOR HEATING AND AIR COOLING
- WALKING DISTANCE TO VICTORIA, SLOANE SQUARE AND KINGS ROAD



Viewings

Viewings by arrangement only.
Call 02077225022 to make an appointment.

Council Tax Band

H

EPC Rating:

C

Energy Efficiency Rating		Current	Potential
<i>Very energy efficient - lower running costs</i>			
(92 plus) A			
(81-91) B			
(69-80) C		80	80
(55-68) D			
(39-54) E			
(21-38) F			
(1-20) G			
<i>Not energy efficient - higher running costs</i>			
England & Wales		EU Directive 2002/91/EC	