



13 Abbats Wood, Eagle Farm South

£425,000 Freehold

Sought-after Abbats Wood development in Eagle Farm South • Perfect home for growing families • Beautifully presented throughout • Spacious principal bedroom with en suite • Close to schools and parks • Large lounge with plenty of natural light • Three well-proportioned bedrooms • Stylish kitchen/diner • Double carport



Council Tax band: C

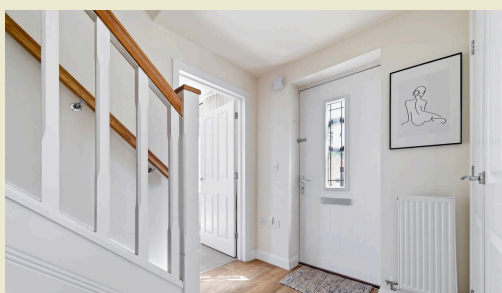
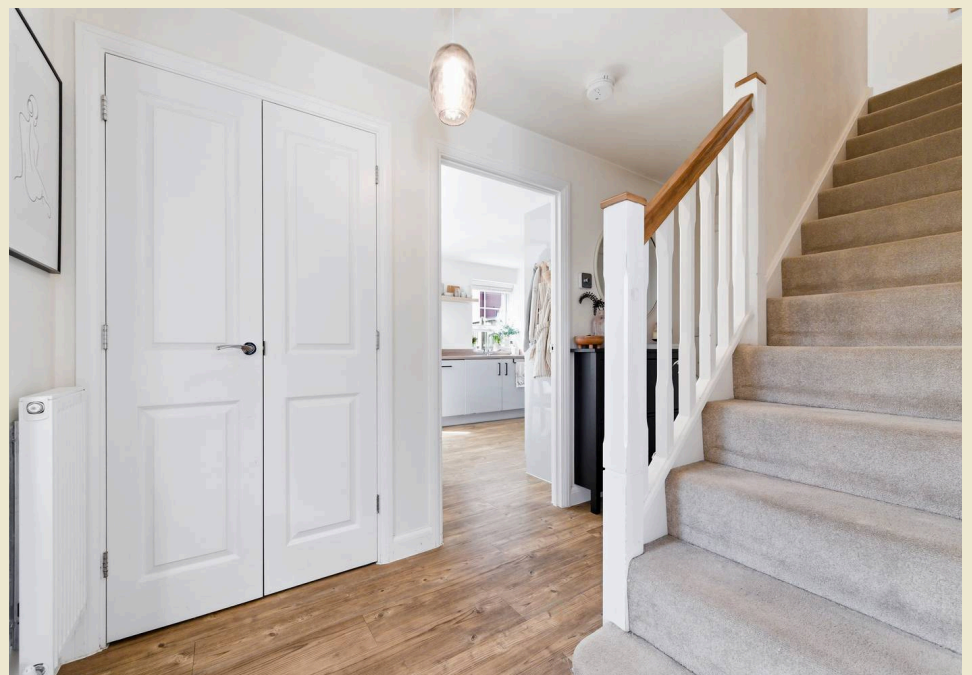
Tenure: Freehold

EPC Energy Efficiency Rating: B

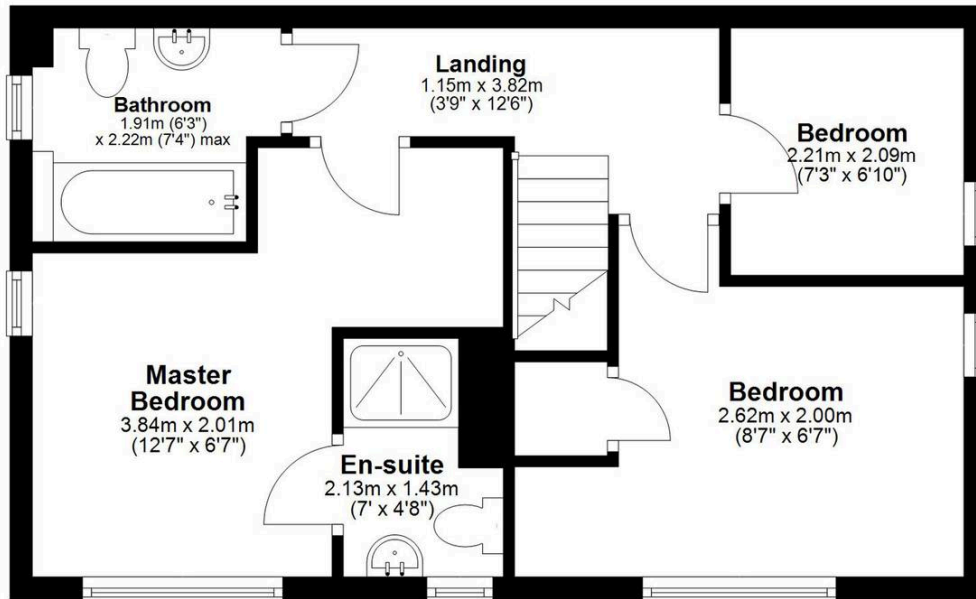
EPC Environmental Impact Rating: B



- Sought-after Abbats Wood development in Eagle Farm South
- Perfect home for growing families
- Beautifully presented throughout
- Spacious principal bedroom with en suite
- Close to schools and parks
- Large lounge with plenty of natural light
- Three well-proportioned bedrooms
- Stylish kitchen/diner
- Double carport

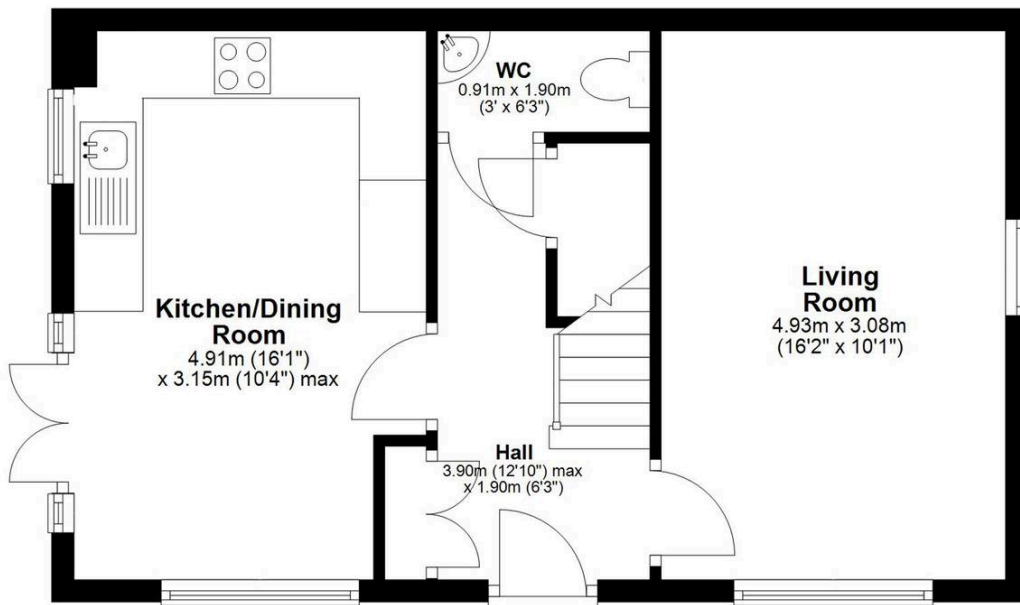


Total area: approx. 82.0 sq. metres (882.4 sq. feet)



First Floor

Approx. 41.0 sq. metres (441.1 sq. feet)



Ground Floor

Approx. 41.0 sq. metres (441.2 sq. feet)

For Illustration Purposes Only - Not To Scale

This floor plan should be used as a general outline for guidance only and does not constitute in whole or in part an offer or contract. Any intending purchaser or lessee should satisfy themselves by inspection, searches, enquiries and full survey as to the correctness of each statement. Any areas, measurements or distances quoted are approximate and should not be used to value a property or be the basis of any sale or let. Cretivelmage.uk

You can include any text here. The text can be modified upon generating your brochure.

