



PALACE COURT, W2

£1,995,000

Moments away from Hyde Park
Newly developed penthouse
Two double bedrooms
South facing terrace
Portered building
EPC- C

@marshandparsons
marshandparsons.co.uk

MARSH &
PARSONS

ABOUT THE PROPERTY

Positioned within a sought-after red brick, portered building, this newly renovated penthouse offers excellent lateral living space.

Saxon Hall is a red brick modern apartment building wonderfully positioned at the southern end of Palace Court, with the stunning green open spaces of Hyde Park on the doorstep. There are excellent transport links at Notting Hill Gate and Bayswater providing access to the Central, Circle and District lines whilst the fabulous array of fashionable boutique shops, cafes and restaurants of Westbourne Grove are also close by.







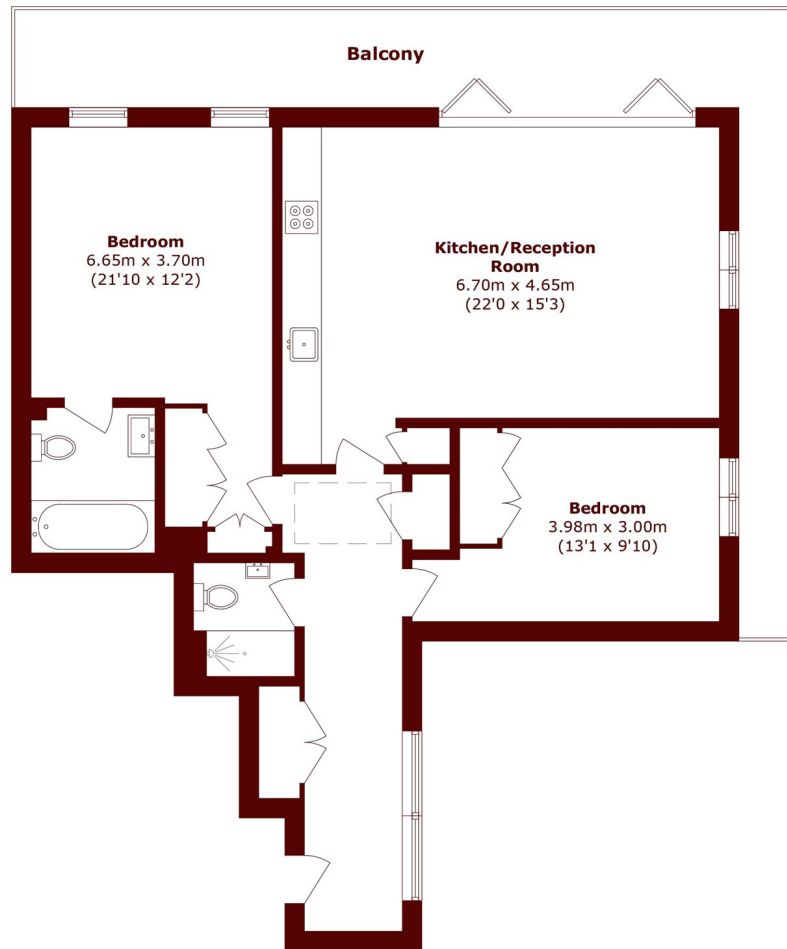
FURTHER DETAILS

The accommodation comprises a bright and spacious reception/dining room, complemented by an open-plan kitchen fitted with high-specification Miele appliances. The property further benefits from two generously sized bedrooms, with the principle bedroom having an en suite bathroom.

A standout feature of the property is the private terrace, providing impressive views across Kensington Gardens and Hyde Park, along with iconic London landmarks such as The Shard and the London Eye.



STEP INSIDE PALACE COURT



Sixth Floor

Total area (approx.): 87.2 sq. m (938.6 sq. ft)
Balcony area (approx.): 24.5 sq m (263.7 sq. ft)

Notting Hill
020 7313 2890

Energy Rating: C We aim to make our particulars both accurate and reliable. However, they are not guaranteed; nor do they form part of an offer or contract. If you require clarification on any points then please contact us, especially if you're traveling some distance to view. Please note that appliances and heating systems have not been tested and therefore no warranties can be given as to their good working order

MARSH &
PARSONS