

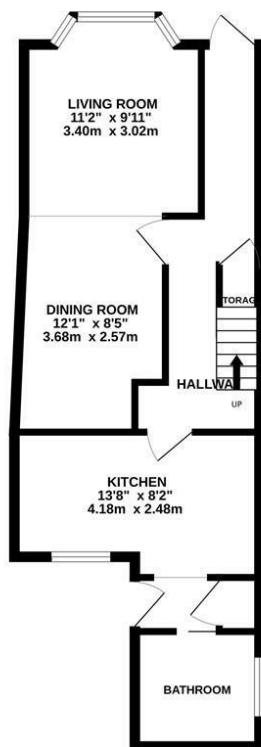
Cornfield Terrace, St. Leonards-On-Sea TN37 6JD

Offers in excess of £350,000

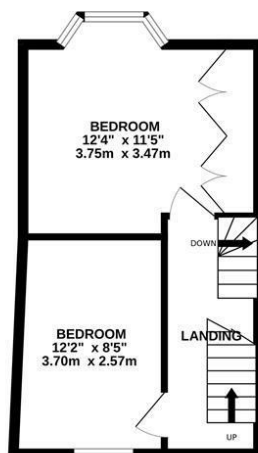


A simply stunning FOUR BEDROOM VICTORIAN TERRACED HOUSE situated close to Alexandra Park, local shops and the hub of St. Leonards where there is a mainline railway station, a range of award winning eateries, galleries and the beach making this home perfectly placed for LIFE BY THE SEA. Spanning THREE STOREYS the accommodation here has been NEWLY RENOVATED THROUGHOUT to offer a stylish family home with luxury fittings, the ground floor is arranged as a BAY FRONTED LIVING ROOM which enjoys a feature fireplace and is open to the DINING ROOM to create the ideal sociable setting. The kitchen is separate and is positioned at the rear of the property fitted with CONTEMPORARY UNITS housing ample storage, worktop space and integrated appliances along with access to the rear garden. There is also a shower room on this floor while the four WELL PROPORTIONED BEDROOMS span the two upper floors together with a STYLISH FAMILY BATHROOM on the second floor. Externally there is a LOW MAINTENANCE REAR GARDEN offering a generous decked space perfect for entertaining or DINING AL-FRESCO. Being sold with NO ONWARD CHAIN this fantastic property would make the perfect family home and is not one to be missed.

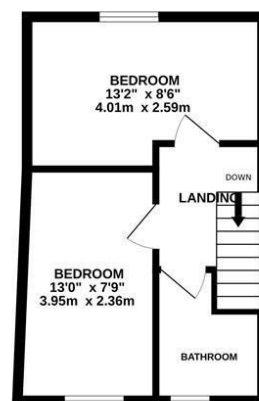
GROUND FLOOR
467 sq.ft. (43.4 sq.m.) approx.



1ST FLOOR
312 sq.ft. (29.0 sq.m.) approx.



2ND FLOOR
286 sq.ft. (26.6 sq.m.) approx.



TOTAL FLOOR AREA : 1065 sq.ft. (98.9 sq.m.) approx.

Whilst every attempt has been made to ensure the accuracy of the floorplan contained here, measurements of doors, windows, rooms and any other items are approximate and no responsibility is taken for any error, omission or mis-statement. This plan is for illustrative purposes only and should be used as such by any prospective purchaser. The services, systems and appliances shown have not been tested and no guarantee as to their operability or efficiency can be given.

Made with Metropix ©2025

