

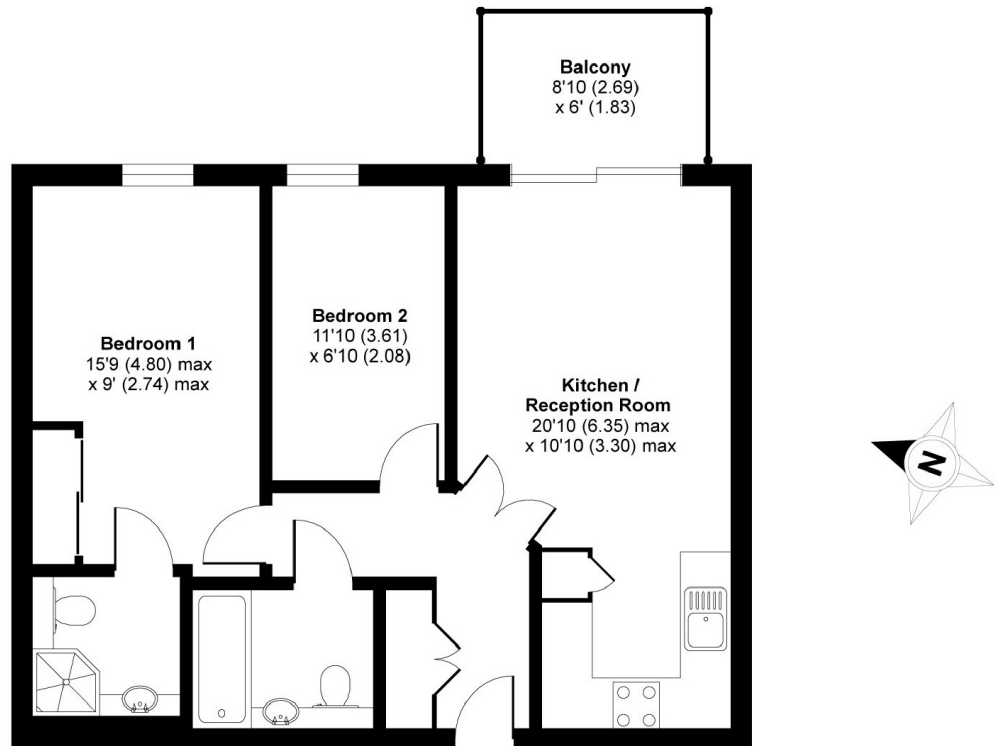


SMUGGLERS WAY, SW18

£2,200 PCM

- Riverside Development
- Two Bedrooms
- Two Bathrooms
- Open Plan Kitchen/Reception
- Private Balcony
- Energy Rating: B





THIRD FLOOR

APPROX. GROSS INTERNAL FLOOR AREA 591 SQ FT 54.9 SQ METRES

Omega Building, Smugglers Way, London, SW18

Copyright nichecom.co.uk 2017 Produced for Jacksons the Independent Estate Agents REF : 162633

JACKSONS WANDSWORTH

507 Old York Road, London,
SW18 1TF
Sales: 020 8875 8890
Lettings: 020 8875 8899

Energy Rating: B We aim to make our particulars both accurate and reliable. However they are not guaranteed; nor do they form part of an offer or contract. If you require clarification on any points then please contact us, especially if you're traveling some distance to view. Please note that appliances and heating systems have not been tested and therefore no warranties can be given as to their good working order.