



Sherrick Green Road, NW10

£950,000

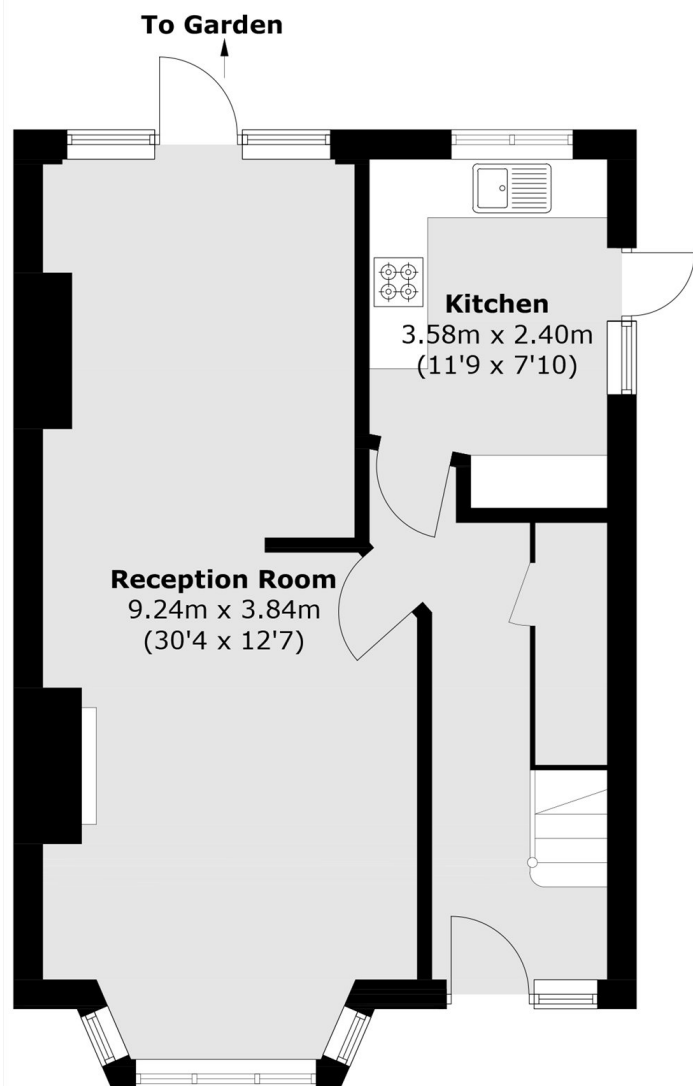
A three bedroom semi-detached house in ready to move condition with potential for side, rear and loft extensions. The property benefits from off-street parking, a garage, a private garden, and is being offered chain free.

Sherrick Green Road is conveniently located close to the ever popular Gladstone Park, as well as Dollis Hill underground station (Jubilee Line). A fantastic location for local amenities and transport links including the A406 & M1.

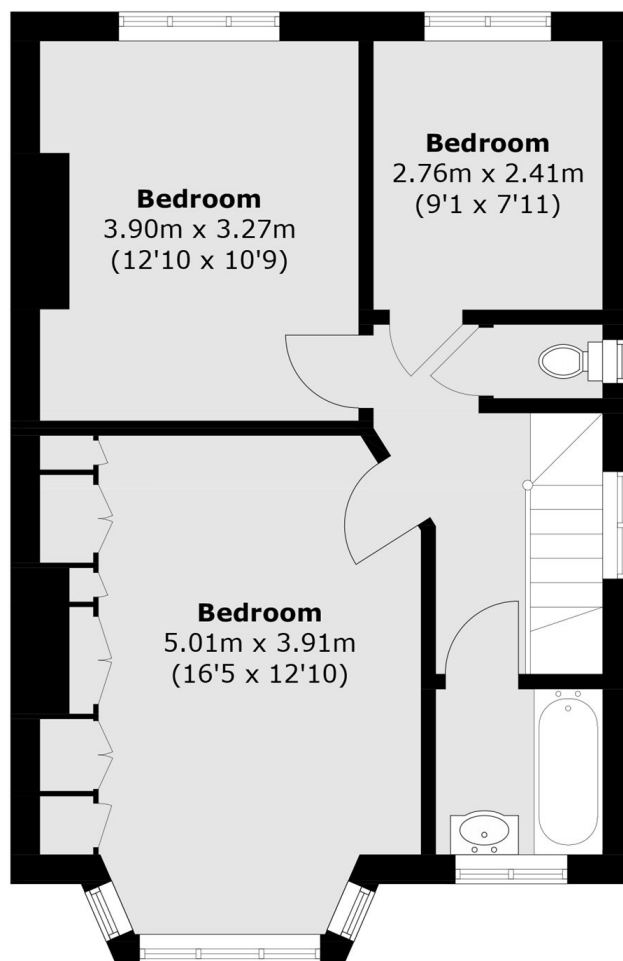
Features

- Semi-Detached House
- Three Bedrooms
- Private Garden
- Extension Potential (STPP)
- Off-Street Parking
- Chain Free

Sherrick Green Road, London, NW10



Ground Floor



First Floor

Total area (approx.): 101.1 sq. m (1,088.2 sq. ft)