



Notting Hill Gate, W11

£692 Per week

Dexters



Notting Hill Gate, W11

A refurbished duplex two double bedroom apartment situated on the 13th and 14th floors of a very well maintained portered development offering semi-open plan living space, a new bathroom, wood flooring, a private balcony and lift access.

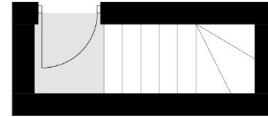
The property is located in the centre of Notting Hill Gate with a short commute to all the shops, bars and restaurants of both Westbourne Grove and Portobello Road.

Features

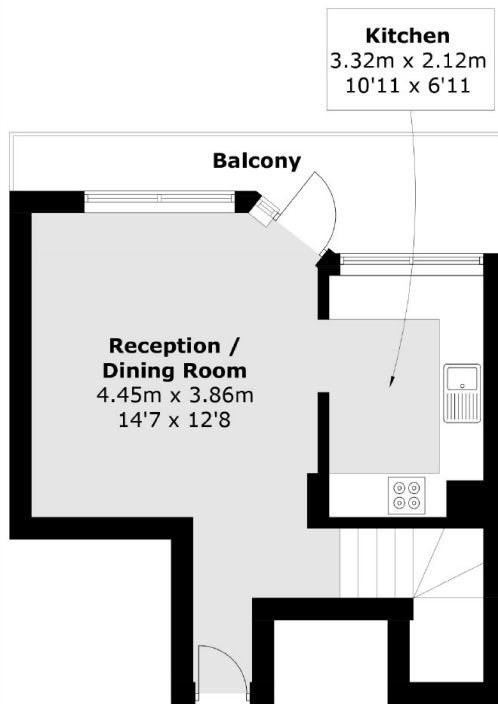
- Two Double Bedrooms
- Wood Flooring
- Portered Development
- Separate Kitchen
- Lift Access
- New Bathroom



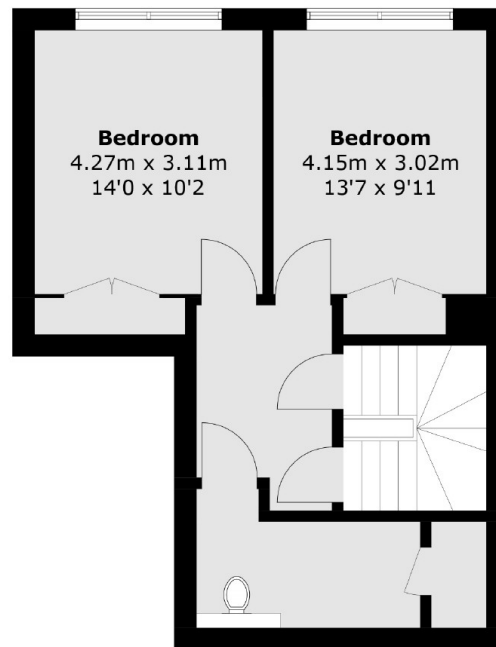
Notting Hill Gate, London, W11



Fifteenth Floor



Thirteenth Floor



Fourteenth Floor

Total area (approx.): 74.2 sq. m (798.5 sq. ft)
Balcony area : 7.3 sq. m (78.5 sq. ft)