



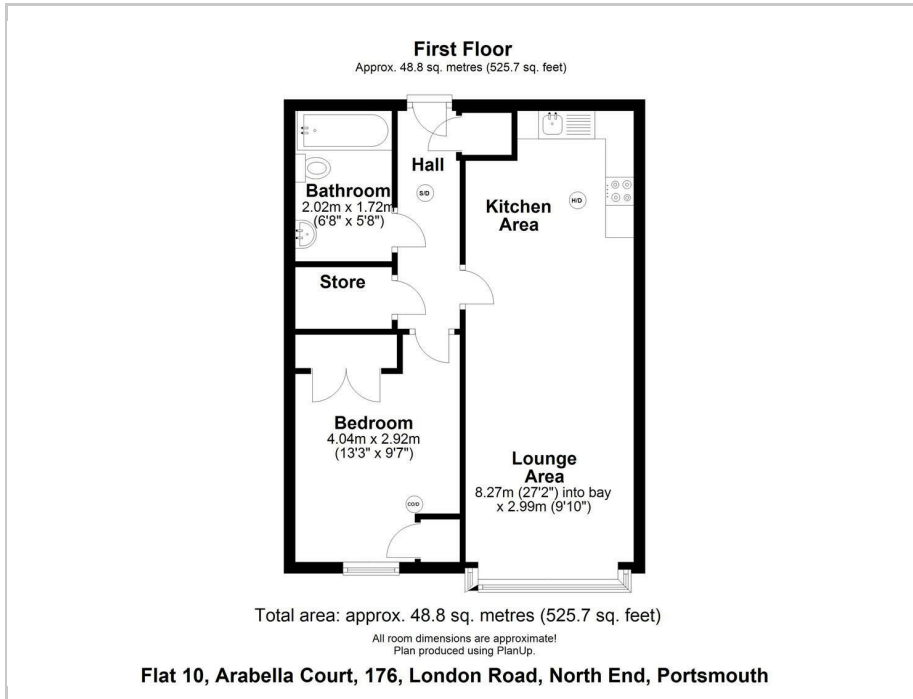
Flat 10 Arabella Court, 176 London Road, Portsmouth, PO2 9DP

£860 PCM Council Tax Band B Deposit £992



Tully's

Floor Plan



Area Map



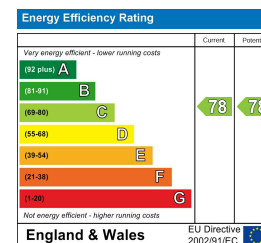
Accommodation

- Holding deposit - £198.00
- Deposit - £992.00
- 1 Bedroom
- 1st Floor
- Integrated white goods including dishwasher and fridge freezer
- Modern apartment
- Available 54/07/2026

Viewing

Please contact our Southsea Office on 023 9273 2241 if you wish to arrange a viewing appointment for this property or require further information.

Energy Efficiency Graph



157-159 Albert Road, Southsea, Portsmouth, Hampshire, PO4 0JW
023 9273 2241 Email: tully@tullyand.co lettings@tullyand.co

Tully's