

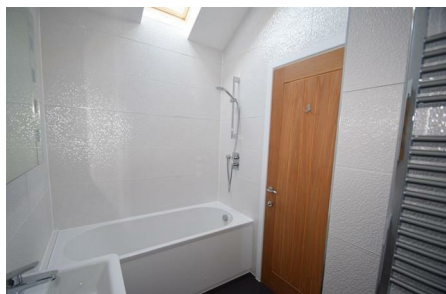


## Greene Mews, Bury St. Edmunds, Suffolk, IP33 1QL

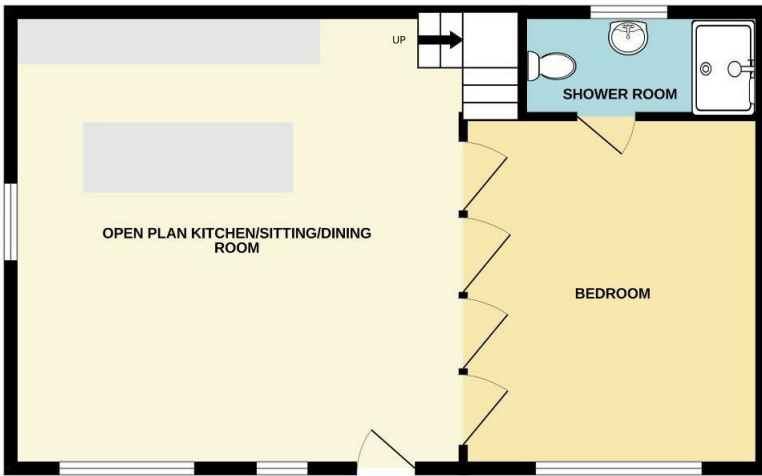
Rent - £1,750 PCM      Deposit - £2,019

Shires Residential are delighted to offer for let this beautifully presented, 2 bedroom coach house only a stones throw from the town centre. The accommodation comprises of a flexibly arranged open plan kitchen and living space (with appliances) downstairs shower room and 2 double bedrooms, with en-suite to main. The property has under floor heating to the ground floor and allocated parking.

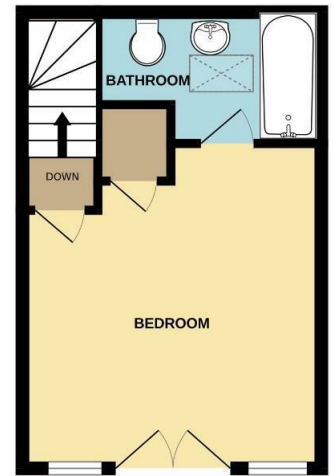
- COACH HOUSE
- 2 BEDROOMS
- SPACIOUS OPEN PLAN KITCHEN/SITTING/DINING ROOM
- SHOWER ROOM & FAMILY BATHROOM
- DESIGNATED PARKING
- SECURE GATED DEVELOPMENT
- GAS HEATING & ENERGY RATING - C
- APPROXIMATE SIZE - 968 SQFT
- COUNCIL TAX BAND - C
- AVAILABLE MID APRIL



GROUND FLOOR



1ST FLOOR



Whilst every attempt has been made to ensure the accuracy of the floorplan contained here, measurements of doors, windows, rooms and any other items are approximate and no responsibility is taken for any error, omission or mis-statement. This plan is for illustrative purposes only and should be used as such by any prospective purchaser. The services, systems and appliances shown have not been tested and no guarantee as to their operability or efficiency can be given.  
Made with Metropix ©2024

