



Malting Way, TW7

£1,525 Per calendar month

A well presented ground floor apartment offering bright, spacious accommodation including a generous reception room, fitted kitchen, double bedroom and bathroom. Further benefits include attractive communal gardens and allocated parking.

Situated in the popular Maltings development, just a short walk from Isleworth station, Isleworth Village shops, cafes and bars, while also close to local amenities, the River Thames and beautiful Syon Park.

Features

- Large Double Bedroom
- Good Condition Throughout
- Bright Living Space
- Communal Gardens
- Allocated Parking
- Desirable Location



Malting Way, TW7

Set on the ground floor, this bright apartment welcomes you with a generous reception room featuring wood flooring creating an inviting space for relaxing, dining or entertaining guests comfortably.

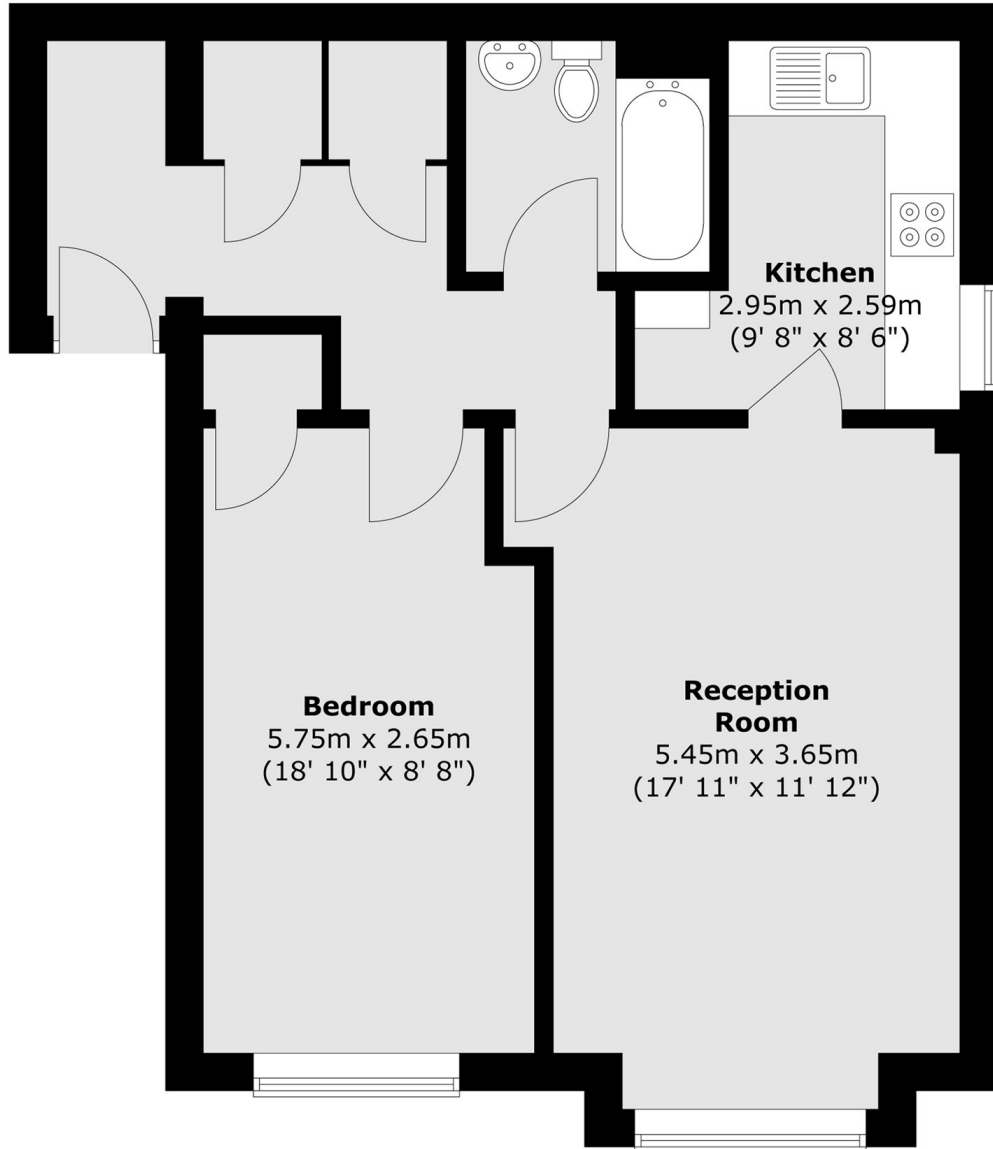
The spacious double bedroom offers soft carpeting, calming tones and excellent proportions while the bathroom is neatly appointed with a full sized bath shower attachment and practical everyday functional easy living layout throughout daily use.

The separate fitted kitchen provides ample storage worktop space and integrated cooking appliances ideal for busy modern everyday family living needs today. Outside residents enjoy attractive communal gardens, pathways and the convenience of allocated parking.



Malting Way,
Isleworth, TW7

Ground Floor



Total area (approx.) : 52.8 sq. m (568 sq. ft)