



## Mozart Gardens, W3

£325,000

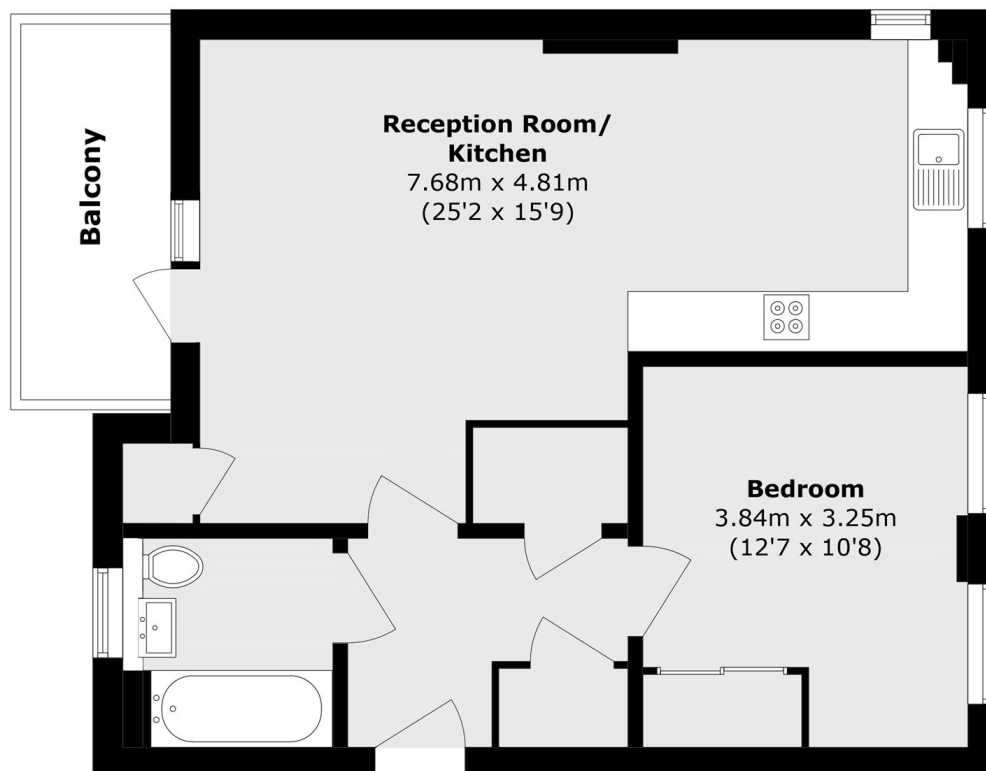
A beautifully presented laterally aligned one bedroom apartment spanning over 600 sq.ft with a dual aspect open plan kitchen reception, high ceilings and private west facing balcony. The property benefits from having low service charge costs and will be sold with no onward chain.

Within walking distance from North Acton station (Central line) which is also equidistant from Acton Main line (Elizabeth Line). The property is situated off of a residential pocket of Acton with local playing fields encompassing Tennis Clubs and Recreational facilities.

### Features

- One Double Bedroom
- Shared Gardens
- Low Service Charge
- Over 600 sq.ft
- Dual Aspect
- Elizabeth Line Connectivity

# Mozart Gardens, London, W3



Total area (approx.): 57.1 sq. m (614.6 sq. ft)

Balcony area (approx.): 5.6 sq. m (60.2 sq. ft)