



## Dartmouth Road, NW2

### £530,000

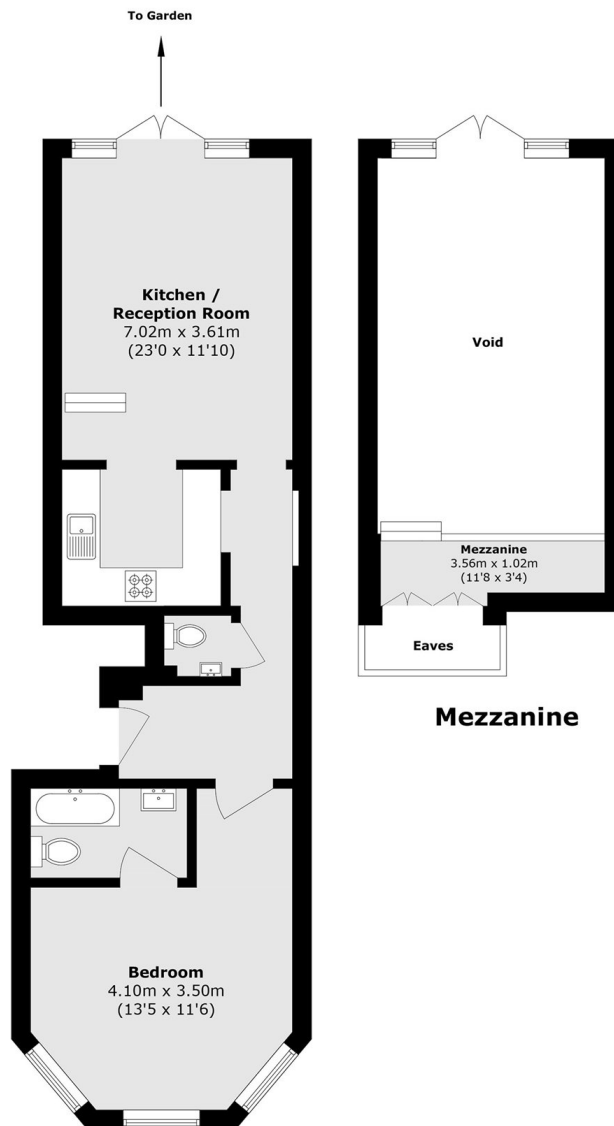
Situated within a beautiful detached building in the favourable Mapesbury Conservation is this sought-after one bedroom ground floor conversion, benefitting from access to a mature private garden, a spacious open plan living area, bathroom and additional WC, and off-street parking.

Dartmouth Road offers a quiet, leafy setting moments from the cafés, delis and shops of Willesden Green. It's also extremely well connected, with several stations within walking distance (including Willesden Green and Kilburn) providing good transport links to the City.

### Features

- Share Of Freehold
- One Bedroom
- Open Plan
- Ground Floor Period Conversion
- Private Garden
- Off-Street Parking

# Dartmouth Road, London, NW2



## Ground Floor

Total area (approx.): 51.6 sq. m (555.4 sq. ft)

Mezzanine area (approx.): 3.2 sq. m (34.4 sq. ft)

(Excluding Eaves & Void)

# Dexters

Cricklewood  
28-30 Cricklewood Broadway  
London  
NW2 3HD  
Sales  
020 7794 7710

Energy Rating: . We aim to make our particulars both accurate and reliable. However they are not guaranteed; nor do they form part of an offer or contract. If you require clarification on any points then please contact us, especially if you're traveling some distance to view. Please note that appliances and heating systems have not been tested and therefore no warranties can be given as to their good working order.

 **RICS** | Regulated  
Estate Agent  
and Letting Agent

[dexters.co.uk](https://www.dexters.co.uk)