



## Dursley Road, SE3

£425,000

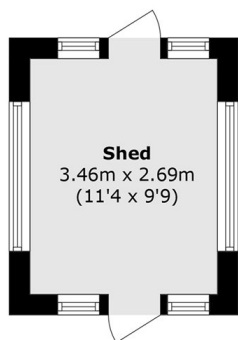
A well presented two double bedroom end of terrace freehold house with off street parking and excellent potential to extend (STPP). The ground floor offers a bright and spacious reception room to the front, creating a comfortable living space with plenty of natural light. To the rear, there is a large kitchen/dining room overlooking the private garden, providing ample storage and worktop space along with room for dining and entertaining. The garden is a generous size and offers a peaceful outdoor retreat. On the first floor are two well-proportioned double bedrooms and a family bathroom, all arranged off a central landing.

Perfectly positioned just a short walk from Kidbrooke Station, providing swift links to Central London and the City. You'll also benefit from easy access to the vibrant Blackheath Village and regular bus routes to North Greenwich (Jubilee Line), Greenwich, and Woolwich for the Elizabeth Line.

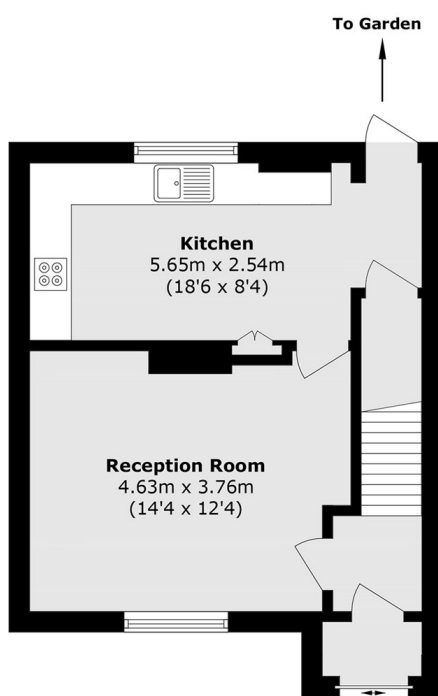
### Features

- End Of Terrace
- Off Street Parking
- Two Double Bedrooms
- Stunning Condition Throughout
- Freehold
- Private Garden

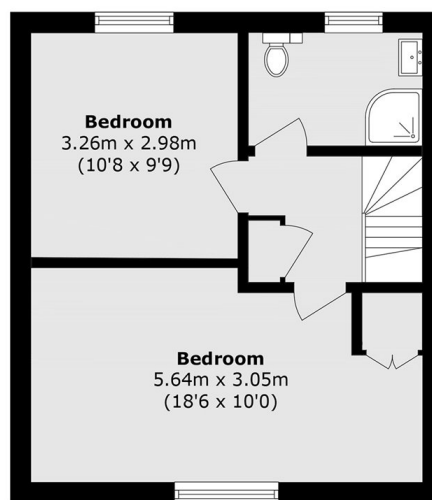
# Dursley Road, London, SE3



**Ground Floor**



**Ground Floor**



**First Floor**

Total area (approx.): 74.0 sq. m (796.5 sq. ft)  
Outbuilding area (approx.): 9.2 sq. m (99.0 sq. ft)