



## LOVERIDGE ROAD, NW6

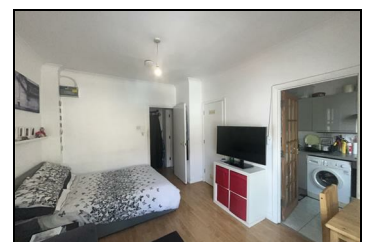
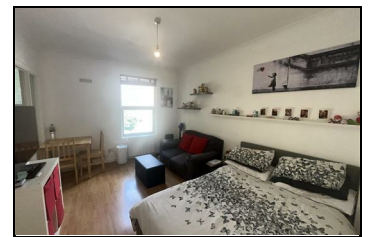
**£1,250 PER CALENDAR MONTH**

A spacious studio flat arranged on the first floor of this Victorian property. Comprises of bright living area with wooden flooring, separate modern kitchen and bathroom. Part furnished.

Availability: Now

Location: Within moments walk of Kilburn tube (Jubilee Line) and Brondesbury Overground stations, zone 2. Moments walk of Kilburn High Road multiple shops and transport facilities.

- Studio Flat
- Wood Flooring
- First Floor Flat
- Seperate Kitchen
- Convenient Location



Energy Efficiency Rating		Environmental Impact (CO <sub>2</sub> ) Rating	
Current	Potential	Current	Potential
85	85	85	85
84	84	84	84
83	83	83	83
82	82	82	82
81	81	81	81
80	80	80	80
79	79	79	79
78	78	78	78
77	77	77	77
76	76	76	76
75	75	75	75
74	74	74	74
73	73	73	73
72	72	72	72
71	71	71	71
70	70	70	70
69	69	69	69
68	68	68	68
67	67	67	67
66	66	66	66
65	65	65	65
64	64	64	64
63	63	63	63
62	62	62	62
61	61	61	61
60	60	60	60
59	59	59	59
58	58	58	58
57	57	57	57
56	56	56	56
55	55	55	55
54	54	54	54
53	53	53	53
52	52	52	52
51	51	51	51
50	50	50	50
49	49	49	49
48	48	48	48
47	47	47	47
46	46	46	46
45	45	45	45
44	44	44	44
43	43	43	43
42	42	42	42
41	41	41	41
40	40	40	40
39	39	39	39
38	38	38	38
37	37	37	37
36	36	36	36
35	35	35	35
34	34	34	34
33	33	33	33
32	32	32	32
31	31	31	31
30	30	30	30
29	29	29	29
28	28	28	28
27	27	27	27
26	26	26	26
25	25	25	25
24	24	24	24
23	23	23	23
22	22	22	22
21	21	21	21
20	20	20	20
19	19	19	19
18	18	18	18
17	17	17	17
16	16	16	16
15	15	15	15
14	14	14	14
13	13	13	13
12	12	12	12
11	11	11	11
10	10	10	10
9	9	9	9
8	8	8	8
7	7	7	7
6	6	6	6
5	5	5	5
4	4	4	4
3	3	3	3
2	2	2	2
1	1	1	1