

## Spa Court, Apartment 1, Edith Walk, Malvern, WR14 4QH

£164,000

🛏 1 🍷 1 🛋 1



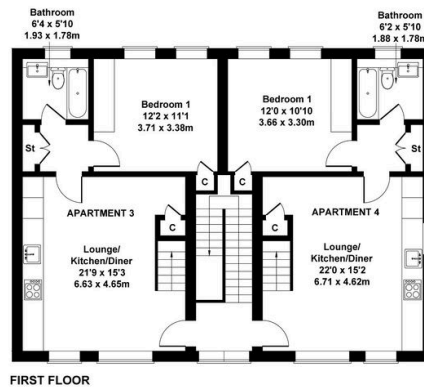
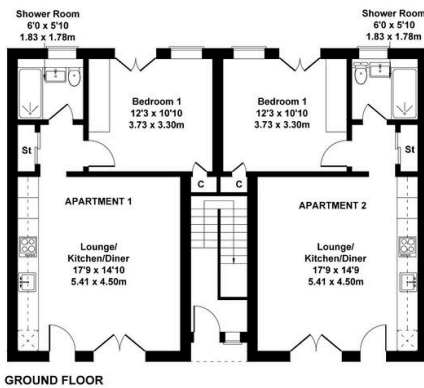
3 Union Road, Shirley, Solihull B90 3BT

sales • new homes • land • commercial • mortgages • auction

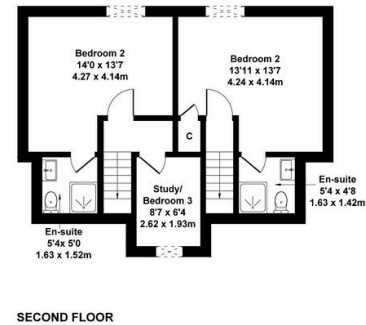
- Close to Restaurants, bars, shops, theatre, park and public transport
- Spacious fully equipped fitted kitchen
- Central Heating and Double Glazed
- Fantastic first time purchase, investment purchase or ideal for someone downsizing
- 10 Year Builders Warranty
- Ground floor apartment with its own entrance door front and back
- Open Plan Living with lounge/dining area and open plan kitchen
- Double Glazed Patio doors off the lounge and also off the double bedroom
- Views of the Malvern Hills with fabulous walks closeby
- Permit Parking Available in Nearby Carpark. First 12 Months Will Be Supplied/Paid by the Developer

### Edith Walk Apartments

Approximate Gross Internal Area  
2681 sq ft - 249 sq m



Not to Scale. Produced by The Plan Portal 2025  
For Illustrative Purposes Only.



A fabulous ground floor newly built apartment situated in Great Malvern, just off Belle Vue Terrace and Worcester Road. This apartment is a very short walk to the local shops, restaurants, coffee shops, pubs/wine/cocktail bars, theatre, library, public transport and situated close to the wonderful Malvern Hills. It is also close to Priory Park and Winter Gardens. The apartment comes with a 10 year built warranty and it's own entrance front and rear. The accommodation comprises spacious open plan lounge with double glazed patio doors to front paved area, fully

3 Union Road, Shirley, Solihull B90 3BT

sales • new homes • land • commercial • mortgages • auction

equipped open plan fitted Kitchen/diner, inner hallway, fitted shower room and double bedroom with double glazed double doors to rear. This apartment comes with central heating and double glazing. Build Completed!

The brand new apartment block itself comes with just 4 new apartments, So don't miss out! Great investment opportunity, first time purchase or someone downsizing!