



Parkfield Road, Cheadle Hulme, SK8 N6EX
£825,000

SNAPES
SALES & LETTINGS AGENTS





SNAPES
SALES & LETTINGS AGENTS



Parkfield Road

Cheadle Hulme, Cheadle

Council Tax band: E

Tenure: Freehold

- Stunning Five Bedroom Extended Detached Home
- Large Plot
- Porch, Entrance Hallway & WC
- Three Reception Rooms
- Stylish Open Plan Kitchen Diner With Bi-Folds & Central Island
- Utility Room & Garage Measuring 27ft (Approx)
- Five Good Sized Bedrooms
- Modern Bathroom, Ensuite & Dressing Room
- Superb Sized Rear Garden & Ample Driveway Parking
- Catchment For Bradshaw Hall Primary & Cheadle Hulme High School



SNAPES
SALES & LETTINGS AGENTS



SNAPES
SALES & LETTINGS AGENTS

Porch

Entrance Hallway

Living Room

11' 11" x 23' 10" (3.63m x 7.26m)

Dining Room

13' 7" x 14' 6" (4.14m x 4.43m)

Kitchen Diner

16' 3" x 19' 6" (4.95m x 5.95m)

Utility Room

6' 10" x 9' 9" (2.08m x 2.98m)

WC

Study

6' 10" x 8' 6" (2.08m x 2.59m)

Garage

8' 5" x 27' 0" (2.57m x 8.23m)

Master Bedroom

11' 10" x 15' 7" (3.60m x 4.74m)

Ensuite

8' 4" x 6' 5" (2.53m x 1.95m)

Dressing Room

8' 4" x 6' 6" (2.53m x 1.98m)

Bedroom Two

11' 10" x 11' 3" (3.60m x 3.43m)

Bedroom Three

17' 0" x 11' 5" (5.19m x 3.48m)

Bedroom Four

10' 10" x 12' 5" (3.30m x 3.79m)

Bedroom Five

7' 9" x 14' 2" (2.35m x 4.33m)

Bathroom

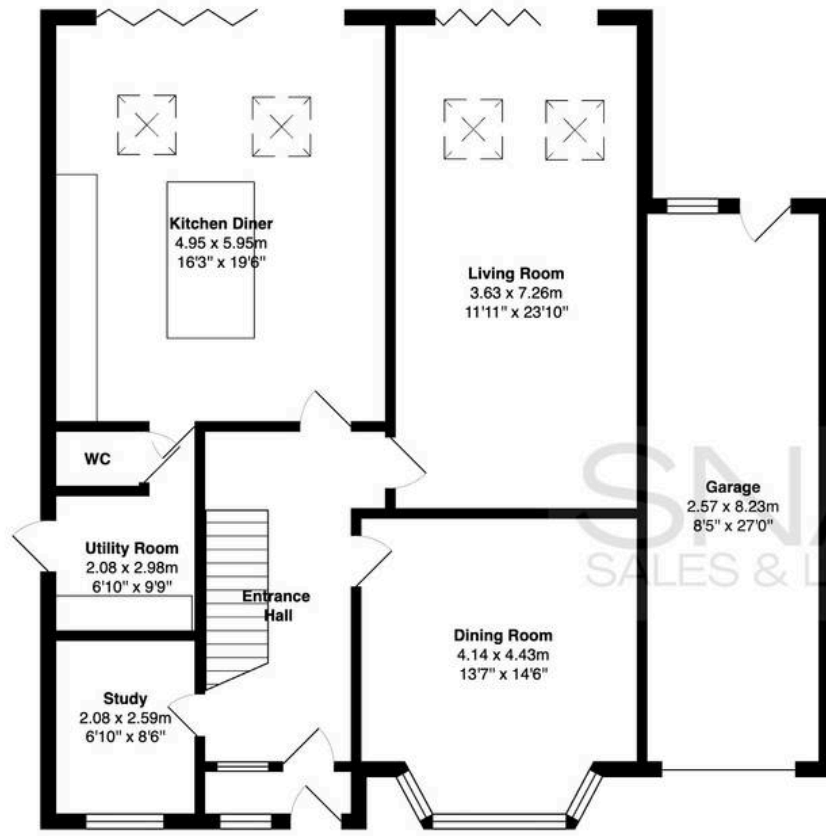


SNAPES
SALES & LETTINGS AGENTS

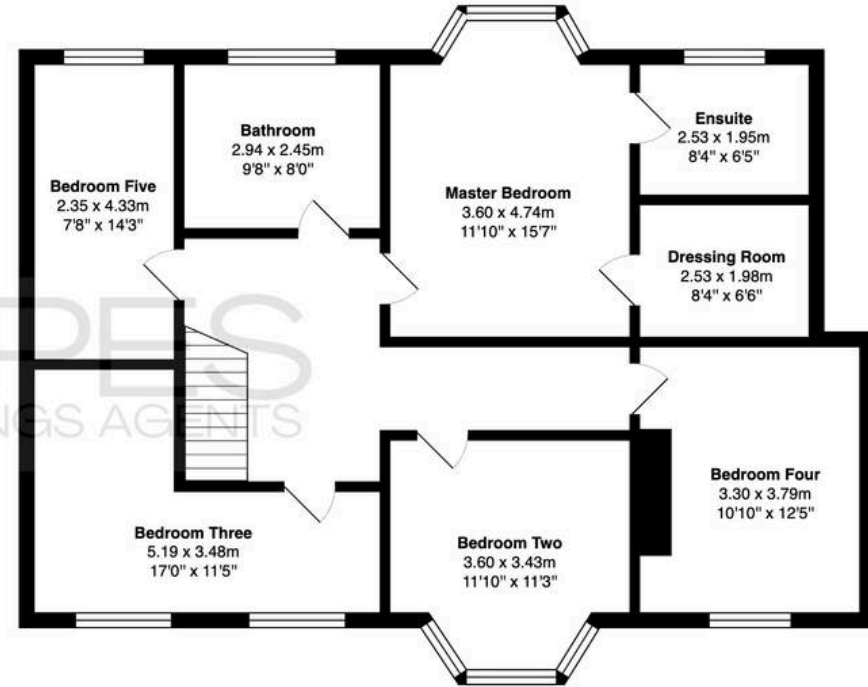


SNAPES
SALES & LETTINGS AGENTS





Ground Floor
Area: 124.4 m² ... 1339 ft²



First Floor
Area: 101.5 m² ... 1093 ft²

Total Area: 226.0 m² ... 2432 ft²

Floor areas are approximate and measured on a Gross Internal Area basis.
Measurements are for guidance only and should not be relied upon for valuation, legal, or planning purposes.

Cheadle Hulme Office

Andrew Snape Estate Agents, 31 Station Road – SK8 5AF

0161 485 2244 • cheadlehulme@snapes.co.uk • www.snapes.co.uk/