



**Connells**

Haragon Drive  
Amesbury Salisbury



## Property Description

This four-bedroom detached family home is situated within the highly sought-after Archer's Gate development, is well presented with a large 19' 5" x 12' 11" kitchen/dining room, living room, cloakroom and ensuite to master. The property is tucked away on the edge of the estate just minutes away from the A303.

### Entrance Hall

Doors to cloakroom, lounge, kitchen/dining room, return stairs to first floor landing, built in cupboard,

### Cloakroom

Comprising a WC and hanging wash hand basin.

### Lounge

Square bay window to front view.

### Large Kitchen/ Dining

Comprising a single drainer sink unit, range of wall and base units with work surfaces over, built in double oven, downlighter spots, rear aspect with French doors to garden.

### Utility Room

Appliance space and door to garden.

### Master Bedroom

Front aspect, with master ensuite side.

### Ensuite

Comprising a shower cubicle, wash hand basin, WC, downlighter spots.

### Bedroom Two

Rear aspect.

### Bedroom Three

Rear aspect

### Bedroom Four

Front aspect.

### Bathroom

Comprising a panel enclosed bath, wash hand basin and WC.

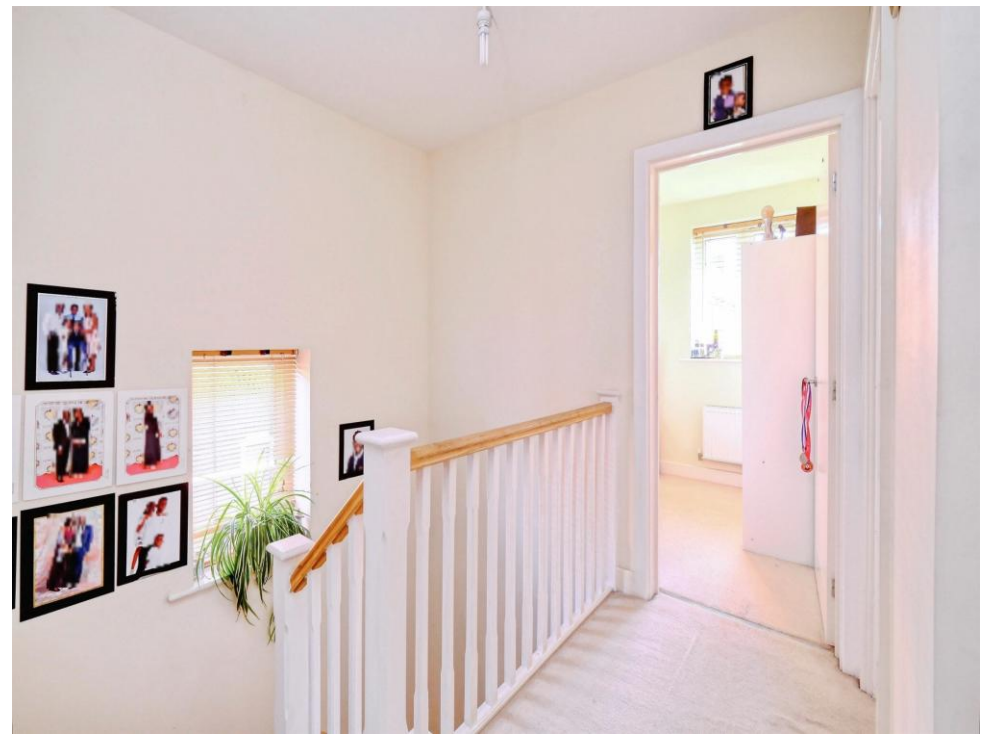
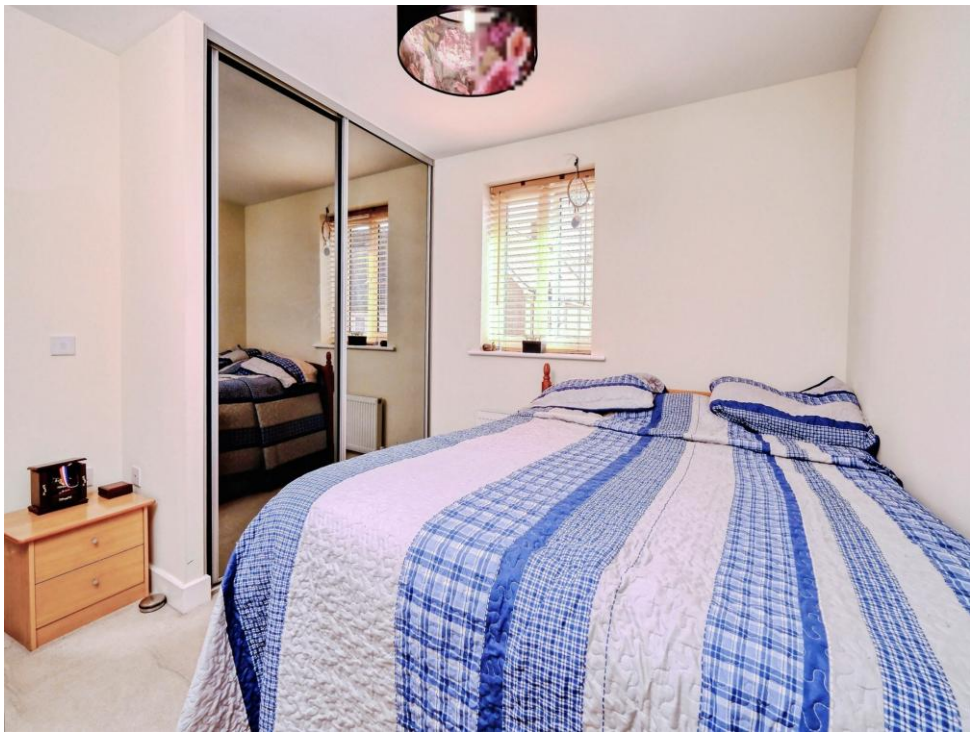
### Outside

Side access.

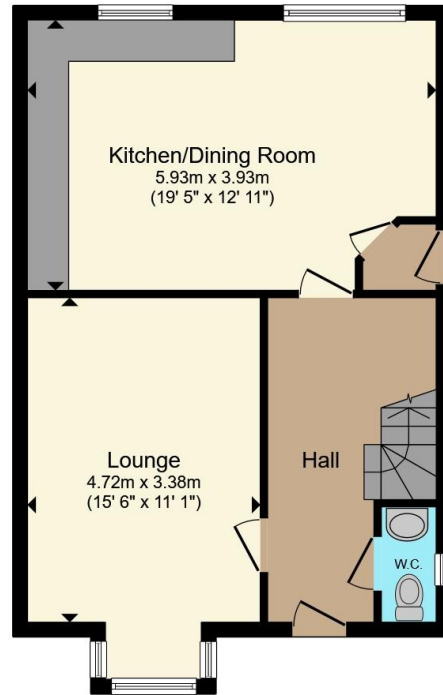
### Detached Garage

With Driveway.

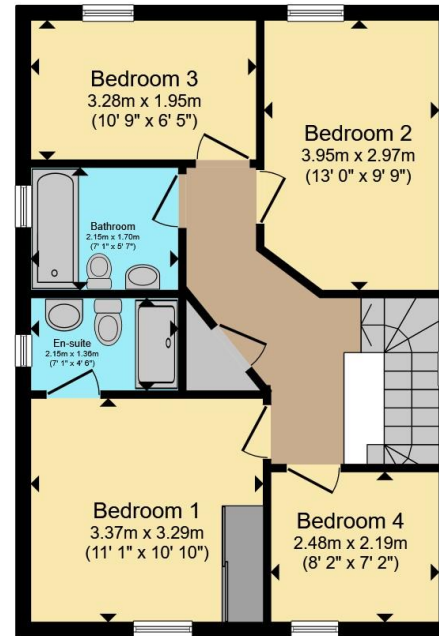








**Ground Floor**



**First Floor**

Total floor area 104.9 m<sup>2</sup> (1,129 sq.ft.) approx

This floor plan is for illustrative purposes only. It is not drawn to scale. Any measurements, floor areas (including any total floor area), openings and orientation are approximate. No details are guaranteed, they cannot be relied upon for any purpose and they do not form part of any agreement. No liability is taken for any error, omission or misstatement. A party must rely upon its own inspection(s). Powered by [www.propertybox.io](http://www.propertybox.io)



To view this property please contact Connells on

**T 01980 622 662**

**E [amesbury@connells.co.uk](mailto:amesbury@connells.co.uk)**

Unit 3 23 Salisbury Street AMESBURY  
SALISBURY SP4 7AW

EPC Rating: C Council Tax  
Band: D

Tenure: Freehold

**view this property online [connells.co.uk/Property/ABY308585](http://connells.co.uk/Property/ABY308585)**



1. MONEY LAUNDERING REGULATIONS Intending purchasers will be asked to produce identification documentation at a later stage and we would ask for your co-operation in order that there will be no delay in agreeing the sale. 2. These particulars do not constitute part or all of an offer or contract. 3. The measurements indicated are supplied for guidance only and as such must be considered incorrect. Potential buyers are advised to recheck measurements before committing to any expense. 4. We have not tested any apparatus, equipment, fixtures, fittings or services and it is in the buyers interest to check the working condition of any appliances.

Connells Residential is registered in England and Wales under company number 1489613, Registered Office is Cumbria House, 16-20 Hockliffe Street, Leighton Buzzard, Bedfordshire, LU7 1GN. VAT Registration Number is 500 2481 05.

**See all our properties at [www.connells.co.uk](http://www.connells.co.uk) | [www.rightmove.co.uk](http://www.rightmove.co.uk) | [www.zoopla.co.uk](http://www.zoopla.co.uk)**

Property Ref: ABY308585 - 0008