



HUNTERS[®]
HERE TO GET *you* THERE

65 Sunningdale, Consett, DH8 7AU

HUNTERS

65 Sunningdale, Consett, DH8 7AU

Offers Over £225,000

This well-presented bungalow is situated in the popular town of Consett, County Durham, offering comfortable single-level living in an established residential setting.

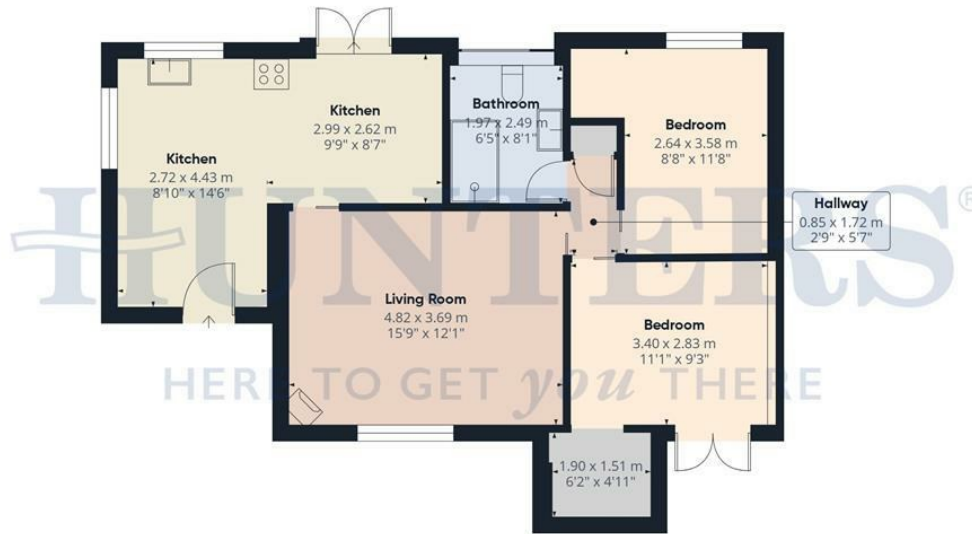
The accommodation briefly comprises a spacious principal double bedroom with separate dressing area and built-in wardrobes, a second double bedroom, a modern family bathroom and the main reception room. The bathroom is fitted with a contemporary rain shower and heated towel rail, while the bright and welcoming lounge benefits from large windows, a log burner and pleasant views over the front garden.

To the rear of the property, the naturally light kitchen/dining room provides an ideal space for everyday living and entertaining, beautifully appointed with granite worktops, extensive storage, ample space for dining furniture, and direct access to the rear garden. The kitchen also provides an integrated fridge, freezer, microwave, dishwasher and washing machine.

Externally, the property enjoys a well-maintained rear garden featuring a spacious lawn and views. A versatile garden office and separate workshop with remote, roller shutter door adds valuable additional workspace or hobby space, while the property further benefit energy ongoing

Consett around country dining

Hunters Consett 15 Victoria Road, Consett, DH8 5BQ | 01207 593838
consett@hunters.com | www.hunters.com



Ground Floor Building 1



Ground Floor Building 2



Approximate total area⁽¹⁾
78.2 m²
841 ft²

(1) Excluding balconies and terraces

Calculations reference the RICS IPMS 3C standard. Measurements are approximate and not to scale. This floor plan is intended for illustration only.

GIRAFFE360

Energy Efficiency Rating

	Current	Potential
Very energy efficient - lower running costs		
(92 plus) A		
(81-91) B		
(69-80) C		
(55-68) D		
(39-54) E		
(21-38) F		
(1-20) G		
Not energy efficient - higher running costs		
		80
	49	
EU Directive 2002/91/EC		


England & Wales

Environmental Impact (CO₂) Rating

	Current	Potential
Very environmentally friendly - lower CO ₂ emissions		
(92 plus) A		
(81-91) B		
(69-80) C		
(55-68) D		
(39-54) E		
(21-38) F		
(1-20) G		
Not environmentally friendly - higher CO ₂ emissions		
EU Directive 2002/91/EC		

England & Wales

Energy Efficiency Rating

	Current	Potential
<i>Very energy efficient - lower running costs</i>		
(92 plus) A		
(81-91) B		
(69-80) C		80
(55-68) D		
(39-54) E	49	
(21-38) F		
(1-20) G		
<i>Not energy efficient - higher running costs</i>		
England & Wales	EU Directive 2002/91/EC	

These particulars are intended to give a fair and reliable description of the property but no responsibility for any inaccuracy or error can be accepted and do not constitute an offer or contract. We have not tested any services or appliances (including central heating if fitted) referred to in these particulars and the purchasers are advised to satisfy themselves as to the working order and condition. If a property is unoccupied at any time there may be reconnection charges for any switched off/disconnected or drained services or appliances - All measurements are approximate. If you are thinking of selling your home or just curious to discover the value of your property, Hunters would be pleased to provide free, no obligation sales and marketing advice. Even if your home is outside the area covered by our local offices we can arrange a Market Appraisal through our national network of Hunters estate agents.





