



Cotton Avenue, London, W3 6YF

NEW CARPETS - FRESHLY PAINTED. A bright two bedroom apartment with modern interiors, featuring double glazing throughout, situated close to the new Acton Main Line station on the Elizabeth Line. Accommodation includes two bedrooms, one reception room, kitchen and modern bathroom, allocated parking. Other local transport links include North, and East Acton (Central line) tube stations, numerous local bus routes with convenient access via M40/A40 to central London, Heathrow and the west. The property comes furnished as seen and is available immediately. Council Tax: Ealing Band D. EPC = D. Offered as part furnished. Available June 1st.

- New Carpets & Freshly Painted
- Great location
- Two bedrooms
- Modern interiors
- Double glazing throughout
- Access to Elizabeth line and two Central line tube stations
- Ealing Council Tax Band D
- Bright and well-lit
- Available 1st June
- Allocated Parking

£1,900 Per Calendar Month

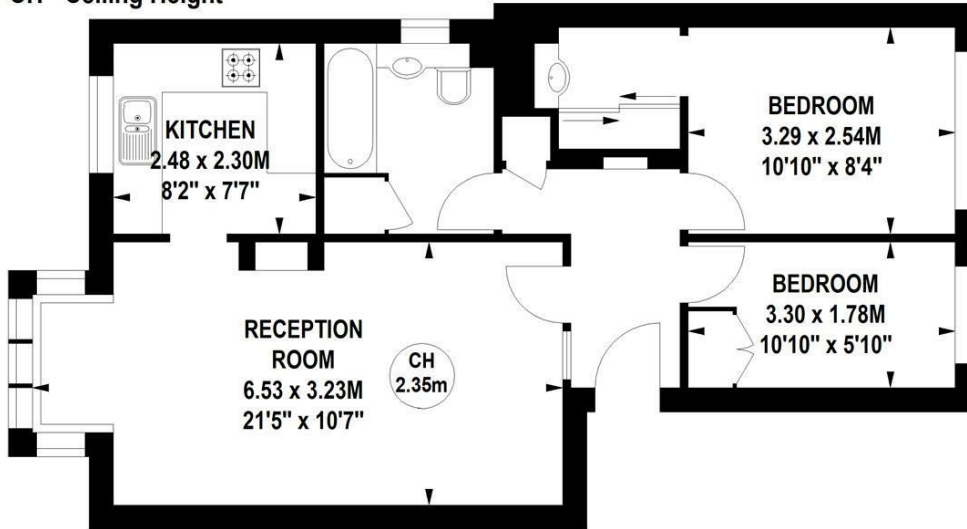
Cotton Avenue, W3

Approximate gross internal area

54.90 sq m / 591 sq ft

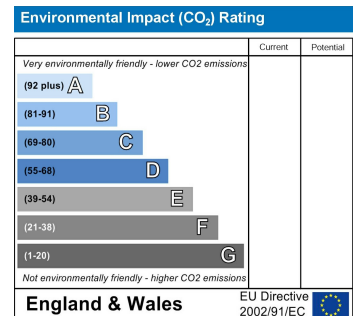
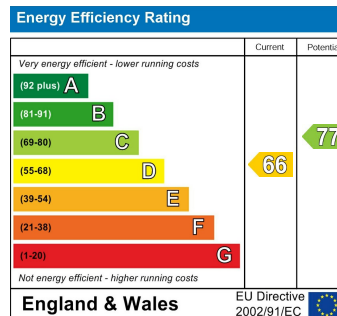


Key :
CH - Ceiling Height



Second Floor

Not to scale, for guidance only and must not be relied upon as a statement of fact.
All measurements and areas are approximate only



5-7 Turnham Green Terrace, Chiswick, London, W4 1RG

Tel 020 8747 8800

E-mail lettings@whitmanandco.com

Website www.whitmanandco.com