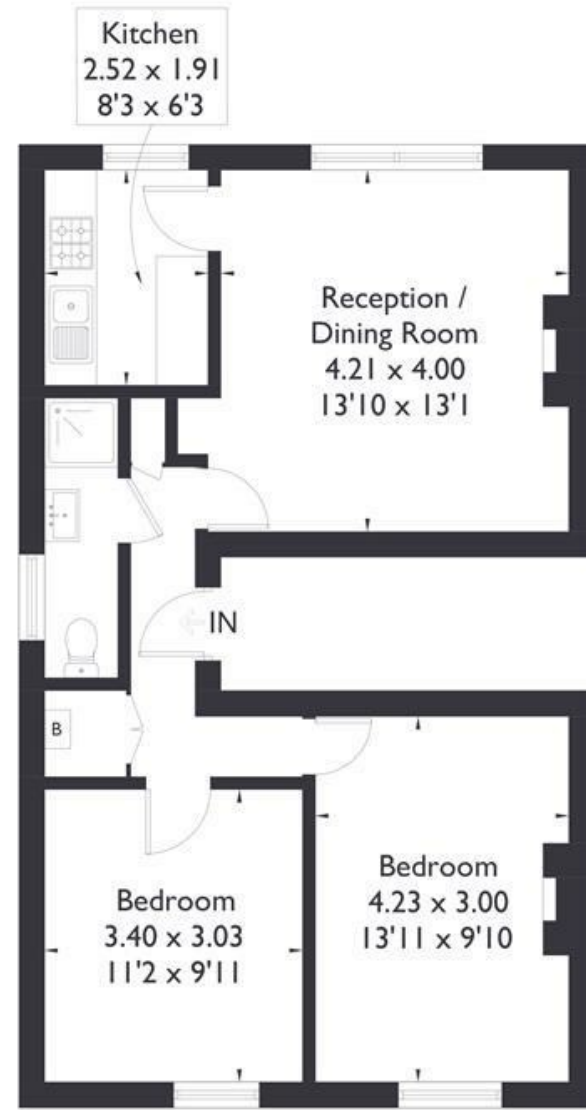


Flat 2, 115 The Grove, W5

Approximate Floor Area = 55.4 sq m / 596 sq ft



Ground Floor



Second Floor



FLAT

FEATURES

The Grove W5
£1,925 PCM

FLAT

The Grove W5

£1,925 PCM

Two double bedroom conversion flat situated in the heart of Ealing Broadway affording easy access to shops, restaurants and transport links. The accommodation comprises fitted kitchen, large characterful lounge and bathroom with shower. Other benefits include new carpets and shared use of the large garden.

