



Keswick Road, SW15

£3,200 Per calendar month

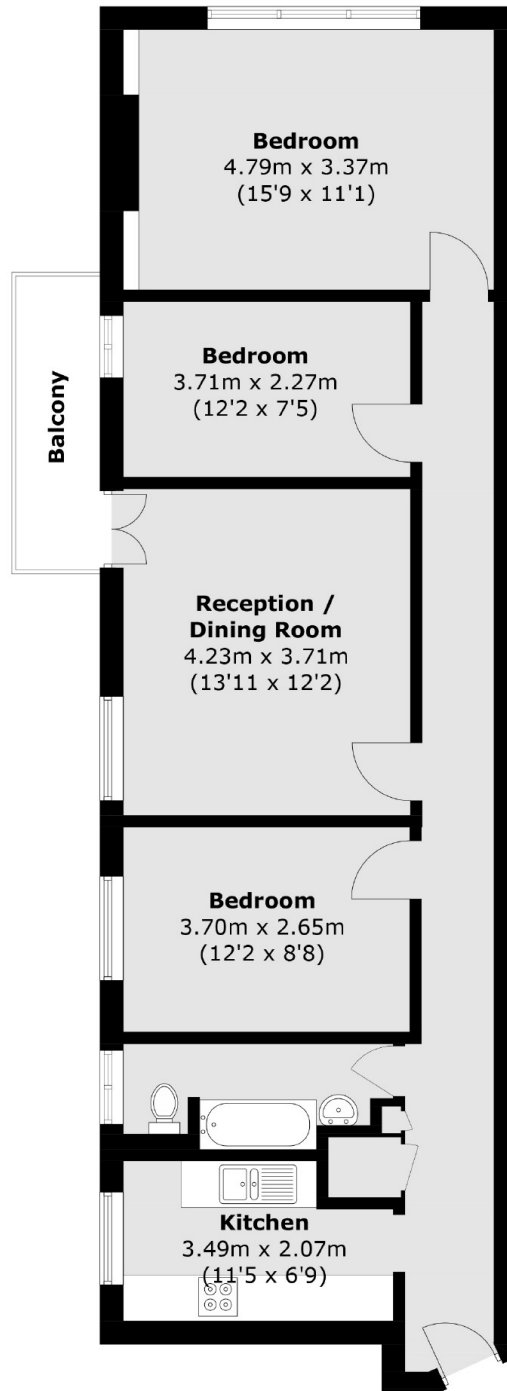
This three double bedroom apartment is set within a private development, and boasts a modern integrated kitchen and contemporary bathroom suite. The property further benefits from a private balcony, delightful communal roof garden and the rent includes heating and hot water.

Millbrooke Court is superbly located on Keswick Road ideal for those commuting into the City or West End via East Putney underground or Putney mainline station.

Features

- Three Double Bedrooms
- Spacious Reception
- Modern Bathroom Suite
- Integrated Kitchen
- Balcony
- Communal Roof Garden

Keswick Road,
London, SW15



Total area (approx.): 80.9 sq. m (870.8 sq. ft)
Balcony: 4.1 sq. m (44.1 sq. ft)