



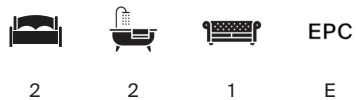
## STANHOPE GARDENS

South Kensington, SW7



## MODERN APARTMENT IN THE HEART OF SOUTH KENSINGTON

A recently refurbished two bedroom apartment with modern fixtures and fittings throughout, located in a sought after location in the heart of South Kensington



Local Authority: Royal Borough of Kensington and Chelsea

Council Tax band: G

Tenure: Leasehold, approximately 107 years remaining

Please note we have been unable to confirm service charge and ground rent amounts or review periods. You should ensure you or your advisors make your own enquiries.

**Guide price: £1,250,000**

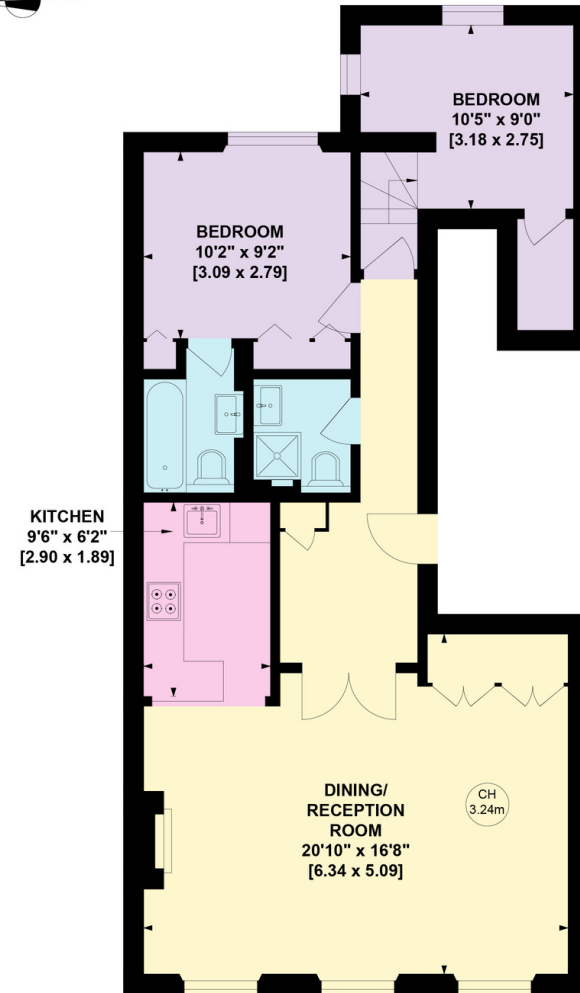
The large three-window wide reception room is flooded with natural light and offers a great space for entertaining. The modern, fully fitted kitchen is located just off the reception room. Both bedrooms are located at the back of the property, with the principle bedroom benefitting from an en-suite bathroom and built in storage. The second bedroom includes built in storage room and there is a family bathroom. Residents can apply for Communal Garden access.

Material Information Disclaimer - Please note, we have not yet received confirmation from the client regarding certain information for this property, including details of the service charge, ground rent, and any applicable review periods. You should ensure that you make your own enquiries, or instruct your advisors to do so, regarding all material information about this property.

Important Notice - Administrator Sale - This property is being marketed for sale on behalf of Joint Administrators and therefore no warranties, representations or guarantees are given in respect of the information in this brochure or any matter relating to the property, including VAT. Any information is provided without liability or reliance placed on it, the Administrators are acting as agents for the Company without personal liability.



Key :  
CH - Ceiling Height



**SECOND FLOOR**

Stanhope Gardens, SW7  
Approximate Gross Internal Area = 71.85 sq m / 773 sq ft

This plan is for layout guidance only. Not drawn to scale unless stated. Windows and door openings are approximate. Whilst every care is taken in the preparation of this plan, please check all dimensions, shapes and compass bearings before making any decisions reliant upon them. (ID767266)

We would be delighted  
to tell you more.

Charlie Roskelly  
+44 2038938948  
charlie.roskelly@knightfrank.com

Knight Frank Chelsea and South Kensington  
352A King's Road  
London, SW3 5UU

[knightfrank.co.uk](https://www.knightfrank.co.uk)

Your partners in property

1. Particulars: These particulars are not an offer or contract, nor part of one. You should not rely on statements given by Knight Frank in the particulars, by word of mouth or in writing ("information") as being factually accurate about the property, its condition or its value. Neither Knight Frank nor any joint agent has any authority to make any representations about the property, and accordingly any information given is entirely without responsibility on the part of Knight Frank. 2. Material Information: Please note that the material information is provided to Knight Frank by third parties and is provided here as a guide only. While Knight Frank has taken steps to verify this information, we advise you to confirm the details of any such material information prior to any offer being submitted. If we are informed of changes to this information by the seller or another third party, we will use reasonable endeavours to update this as soon as practical. 3. Photos, Videos etc: The photographs, property videos and virtual viewings etc. show only certain parts of the property as they appeared at the time they were taken. Areas, measurements and distances given are approximate only. 4. Regulations etc: Any reference to alterations to, or use of, any part of the property does not mean that any necessary planning, building regulations or other consent has been obtained. A buyer must find out by inspection or in other ways that these matters have been properly dealt with and that all information is correct. 5. Fixtures and fittings: A list of the fitted carpets, curtains, light fittings and other items fixed to the property which are included in the sale (or may be available by separate negotiation) will be provided by the Seller's Solicitors. 6. VAT: The VAT position relating to the property may change without notice. 7. To find out how we process Personal Data, please refer to our Group Privacy Statement and other notices at <https://www.knightfrank.com/legals/privacy-statement>.

Particulars dated June 2026. Photographs and videos dated June 2026. All information is correct at the time of going to print. Knight Frank is the trading name of Knight Frank LLP. Knight Frank LLP is a limited liability partnership registered in England and Wales with registered number OC305934. Our registered office is at 55 Baker Street, London W1U 8AN. We use the term 'partner' to refer to a member of Knight Frank LLP, or an employee or consultant. A list of members names of Knight Frank LLP may be inspected at our registered office. If you do not want us to contact you further about our services then please contact us by either calling 020 3544 0692, email to [marketing.help@knightfrank.com](mailto:marketing.help@knightfrank.com) or post to our UK Residential Marketing Manager at our registered office (above) providing your name and address.