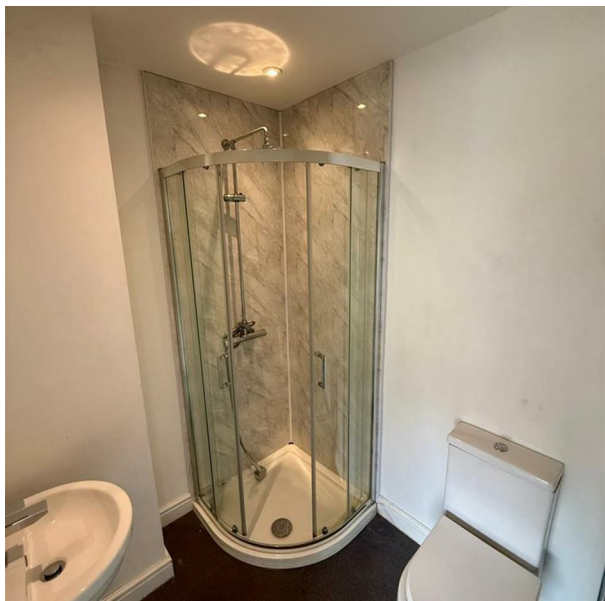


257 Ainsworth Lane, Bolton, BL2 2QQ
£2,500 Per Month
Council Tax Band: A



Nestled in the charming area of Ainsworth Lane, Bolton, this impressive mid-terrace house offers a unique opportunity for those seeking a spacious and modern living arrangement. Built in 1890, this property has been thoughtfully designed to cater to the needs of contemporary living while retaining its character.

Spanning an ample 1,205 square feet, this large house features five generously sized double bedrooms, each equipped with its own en-suite bathroom, ensuring privacy and convenience for all residents. The shared kitchen is well-appointed, providing a communal space for cooking and socialising, while the garden offers a delightful outdoor area for relaxation and enjoyment.



St Johns Court 19b Quay Street, Manchester, M3 3HN

01616760099

manchester@orlandoreid.co.uk

<https://www.orlandoreid.co.uk/manchester/>

