

CHRISTIAN REID
ESTATE AGENTS



Marjoram Avenue £370,000

Cranleigh, GU6 8GS



2 Bedrooms



1 Reception



1 Bathroom

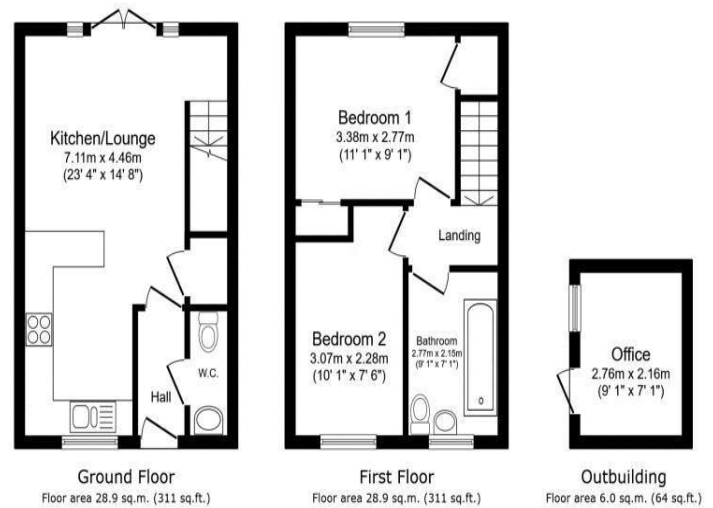


End Terrace



EPC: B

A Well Presented New Build Home in a Sought After Location Close to Knowle Country Park and Walking Distance to the High Street. This ideal First Home or Rental Investment Property offers a bright and airy open-plan Living Room & Kitchen downstairs with an Entrance Hall and Downstairs WC. Upstairs offers a well proportioned Master Bedroom with Built-in Wardrobes and over-stairs Cupboard, plus a bright and airy Second Bedroom and a Modern Bathroom finished to a lovely standard. The Rear Garden has been well landscaped and benefits a fully functional Home Office/Studio. There are two allocated Parking Spaces in the adjacent Residents Car Park. The Property benefits from Gas Central Heating, double glazing throughout and an EPC rating of B



Whilst every attempt has been made to ensure the accuracy of the floorplan contained here, measurements of doors, windows, rooms and any other items are approximate and no responsibility is taken for any error, omission or mis-statement. This plan is for illustrative purposes only and should be used as such by any prospective purchaser. The services, systems and appliances shown have not been tested and no guarantee as to their operability or efficiency can be given.
Made with Metropix 62025