



20 Bath Street, Staple Hill, Bristol, BS16 5NT

£325,000

A splendid two bedroom period built mid-terrace home with enclosed landscaped garden and insulated home office/shed. The property is presented in super order throughout offering lots of character with a modern twist. The property benefits from gas central heating, double glazing and modern kitchen and bathroom facilities. The accommodation comprises entrance vestibule, dining room, living room, kitchen to the ground floor with two double bedrooms and bathroom. The property is situated in the heart of Staple Hill, close to all local shops, good bus routes. Page Park, and the Bristol to Bath Cycle Path are minutes away. Energy Rating D. Council Tax B.

- Two Double Bedrooms
- Well Presented
- Lots of Character
- Two Reception Rooms
- Kitchen
- Modern Bathroom
- Gas Central Heating
- Double Glazing
- Landscaped Garden
- Situated in the heart of Staple Hill

Viewing

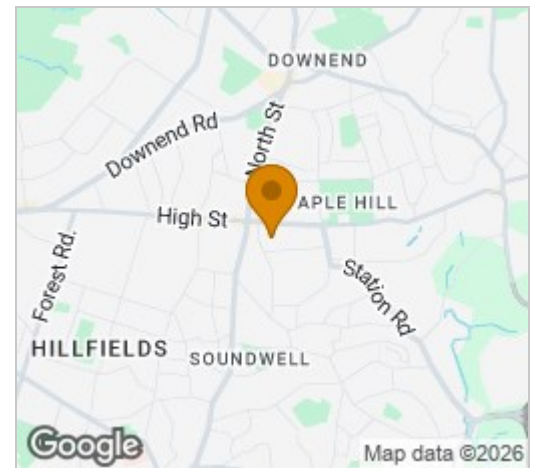
Please contact our Brunt & Fussell Ltd Office on 01179566004 if you wish to arrange a viewing appointment for this property or require further information.



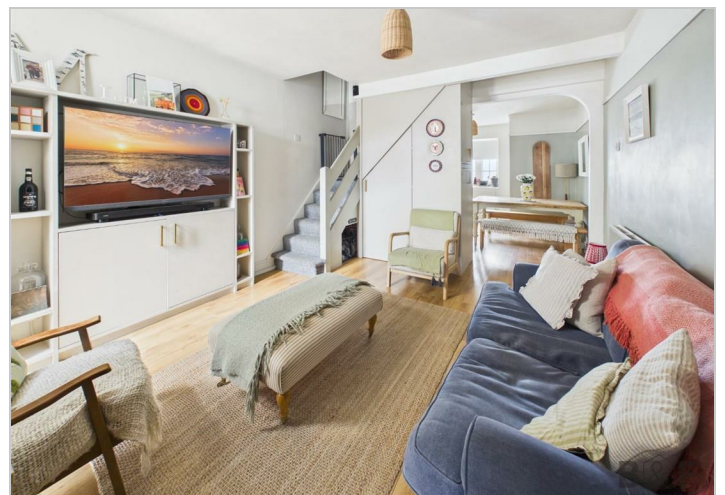
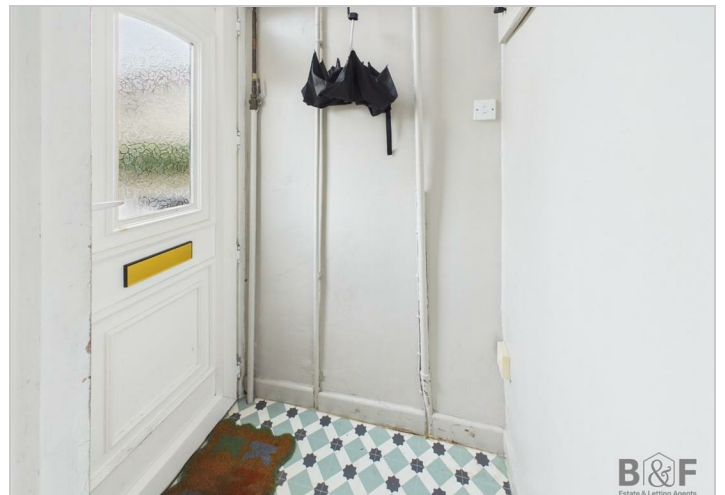
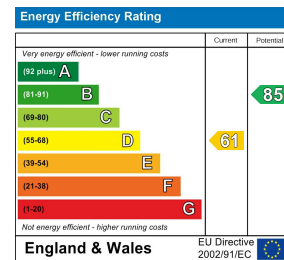
Floor Plan



Area Map



Energy Efficiency Graph



These particulars, whilst believed to be accurate are set out as a general outline only for guidance and do not constitute any part of an offer or contract. Intending purchasers should not rely on them as statements of representation of fact, but must satisfy themselves by inspection or otherwise as to their accuracy. No person in this firm's employment has the authority to make or give any representation or warranty in respect of the property.