



COUNTRY
HOLMES

Burnside, Hadfield, Glossop, SK13 2DX

£300,000

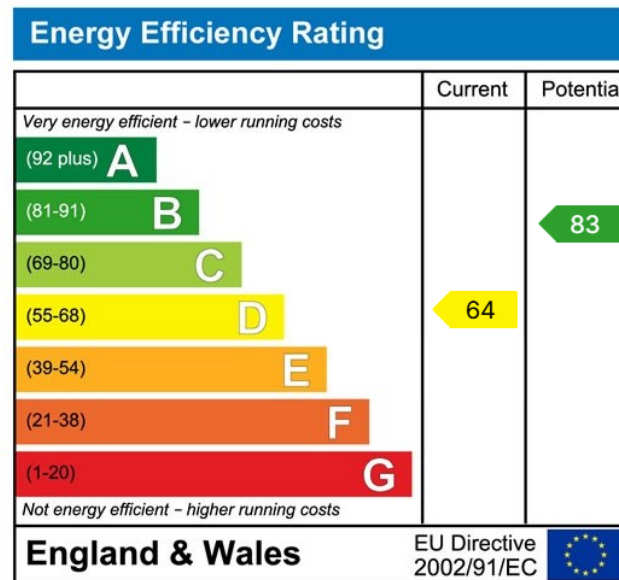
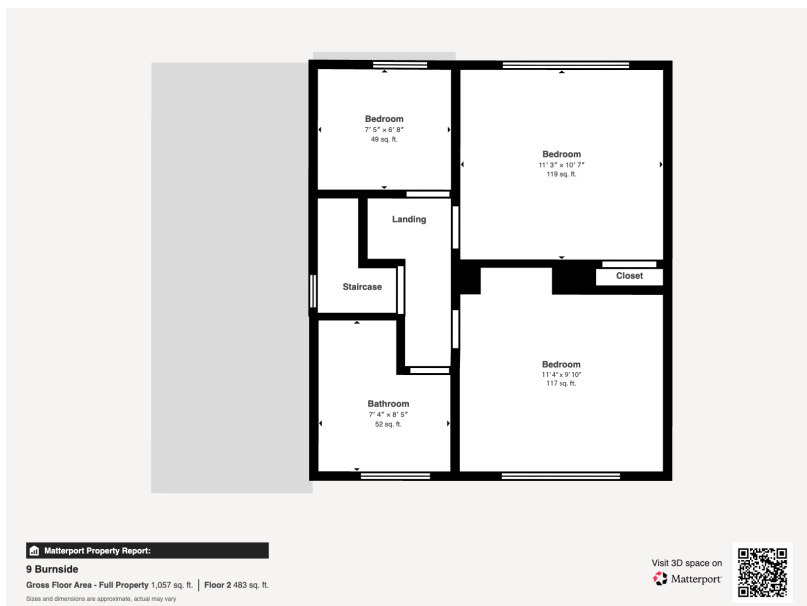
3 1 1



- Immaculately presented link semi-detached family home
- Three well-proportioned bedrooms
- Generous plot at the head of a quiet cul-de-sac
- Popular village location in Hadfield
- Separate utility room with access to garden and integral garage
- Attractive two-tier rear garden with patio and pergola seating area
- Stunning four-piece family bathroom
- Excellent access to local amenities and rail links into Manchester



Country Holmes are pleased to present this beautifully maintained link semi-detached family home, occupying a generous plot at the head of a quiet cul-de-sac in the popular village of Hadfield. Offering spacious open-plan living, a modern fitted kitchen with utility room, three well-proportioned bedrooms and a stunning four-piece family bathroom, the property is ideal for growing families. With a driveway for several vehicles, integral garage with power points and a superb two-tier rear garden perfect for entertaining, this fantastic home also benefits from excellent access to local amenities and transport links into Manchester.



01457 761310 | glossop@countryholmes.co.uk | www.countryholmes.co.uk
 18 High Street West, Glossop, Derbyshire, SK13 8BH