



£895 Per Month

227 CHAPEL STREET | LANGWITH | MANSFIELD | NG20 9BS

BuckleyBrown
ESTATE AGENTS

Available To Let is this well-presented three-bedroom semi-detached property located on Chapel Street in the popular village of Langwith.

Upon entering the property you are greeted with a spacious living room with ample natural light, and a fitted kitchen offering a range of wall and base units with space for appliances. To the first floor are three well-proportioned bedrooms and a family bathroom fitted with a modern white suite.

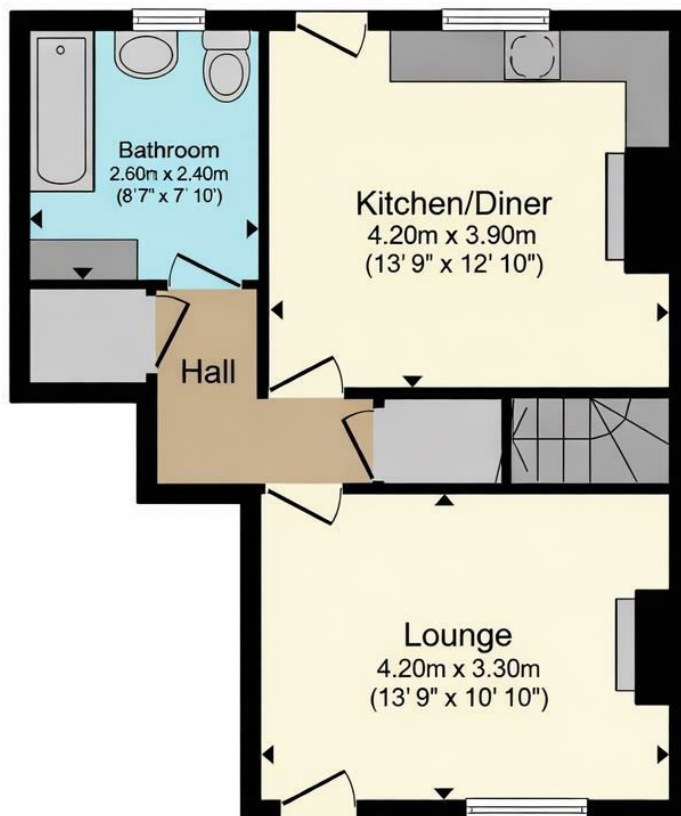
Externally, the property benefits from low-maintenance outdoor space and is situated within a residential area with convenient access to local amenities, schools and transport links, including easy routes to Shirebrook, Mansfield and surrounding areas. This property would be ideally suited to a family or professional tenants seeking a comfortable home in a well-connected location.

Early viewing is highly recommended to appreciate the accommodation on offer.









Ground Floor



First Floor

Total floor area 90.9 m² (978 sq.ft.) approx

This floor plan is for illustrative purposes only. It is not drawn to scale. Any measurement, room areas, the proportions are, approximate. No details are guaranteed, they cannot be relied upon for any purpose and they do not form part of any agreement. No liability is taken for any error, omission or misstatement. A party must rely upon its own inspection(s). Powered by www.iagent.com

IMPORTANT: we would like to inform prospective purchasers that these sales particulars have been prepared as a general guide only. A detailed survey has not been carried out, nor the services, appliances and fittings tested. Room sizes should not be relied upon for furnishing purposes and are approximate. If floor plans are included, they are for guidance only and illustration purposes only and may not be to scale. If there are any important matters likely to affect your decision to buy, please contact us before viewing the property.

Energy Efficiency Rating		
	Current	Potential
Very energy efficient - lower running costs		
(92 plus) A		
(81-91) B		
(69-80) C		
(55-68) D		
(39-54) E		
(21-38) F		
(1-20) G		
Not energy efficient - higher running costs		
England & Wales		
EU Directive 2002/91/EC		

79

64

227 CHAPEL STREET
LANGWITH
MANSFIELD
NG20 9BS

BuckleyBrown Estate Agents

55 - 57 Leeming Street | Mansfield | Nottinghamshire | NG18 1ND

23 High Street | Edwinstowe | Nottinghamshire | NG21 9QP

1 Market Place | Bolsover | Chesterfield | S44 6PN

www.buckleybrown.co.uk

t: 01623 633 633

t: 01623 633 633

t: 01246 605121

IMPORTANT: we would like to inform prospective purchasers that these sales particulars have been prepared as a general guide only. A detailed survey has not been carried out, nor the services, appliances and fittings tested. Room sizes should not be relied upon for furnishing purposes and are approximate. If floor plans are included, they are for guidance only and illustration purposes only and may not be to scale. If there are any important matters likely to affect your decision to buy, please contact us before viewing the property.

