



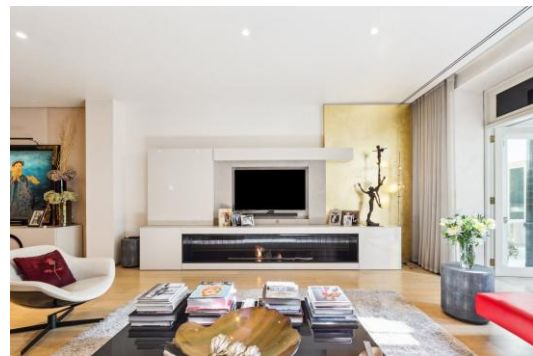
Connaught Place

London, W2

£12,500 per month
(£2,884.62 per week)

A rare opportunity to acquire a truly exceptional three-bedroom duplex, set within a distinguished Grade II listed building, directly opposite Hyde Park. This stunning split-level residence, a private terrace with a southwest orientation.

CHESTERTONS



Connaught Place

London, W2

- Available Now
- 3 bedroom and 2 bathrooms
- Separate guest bathroom
- Comfort cooling
- 2352 sq. ft
- Pet friendly
- Private and secure parking available
- Private terrace

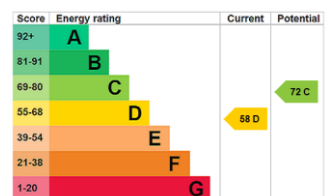


A rare opportunity to acquire a truly exceptional three-bedroom duplex, set within a distinguished Grade II listed building, directly opposite Hyde Park. This stunning split-level residence, a private terrace with a southwest orientation, offering an abundance of natural light and breath-taking park views.

Thoughtfully designed, the apartment features an elegant hallway leading to a spacious living area, complete with an electric fireplace, creating a warm and inviting atmosphere. The separate, well-appointed kitchen is ideal for effortless entertaining.

The principal suite is a luxurious retreat, featuring a walk-in

Minimum Term: 6 months
Deposit Required: £17,307.69
Local Authority: City Of Westminster
Council Tax Band: H
EPC Rating: D
Furnished



Chestertons Hyde Park

40 Connaught Street
 Hyde Park & Marylebone
 London
 W2 2AB
 hydeparklettingsusers@chestertons.co.uk
 02072985950
 chestertons.co.uk

Additional tenant charges apply (fees apply to non-AST tenancies only)
 Tenancy Agreement Fee: £300
 References per Tenant/Guarantor: £60
 Inventory check (approx. £100 – £250 inc. VAT)
 chestertons.co.uk/property-to-rent/applicable-fees

Connaught Place, W2

Approximate gross internal area
218.54 sq m / 2352 sq ft
(Excluding Courtyard & Terrace)
Courtyard
34.39 sq m / 370 sq ft
Terrace
73.18 sq m / 788 sq ft

Key :
CH - Ceiling Height



Not to scale, for guidance only and must not be relied upon as a statement of fact.
All measurements and areas are approximate only