



112 Old Christchurch Road  
Bournemouth, BH1 1LU

**£1,800 Per month**



## 112 Old Christchurch Road

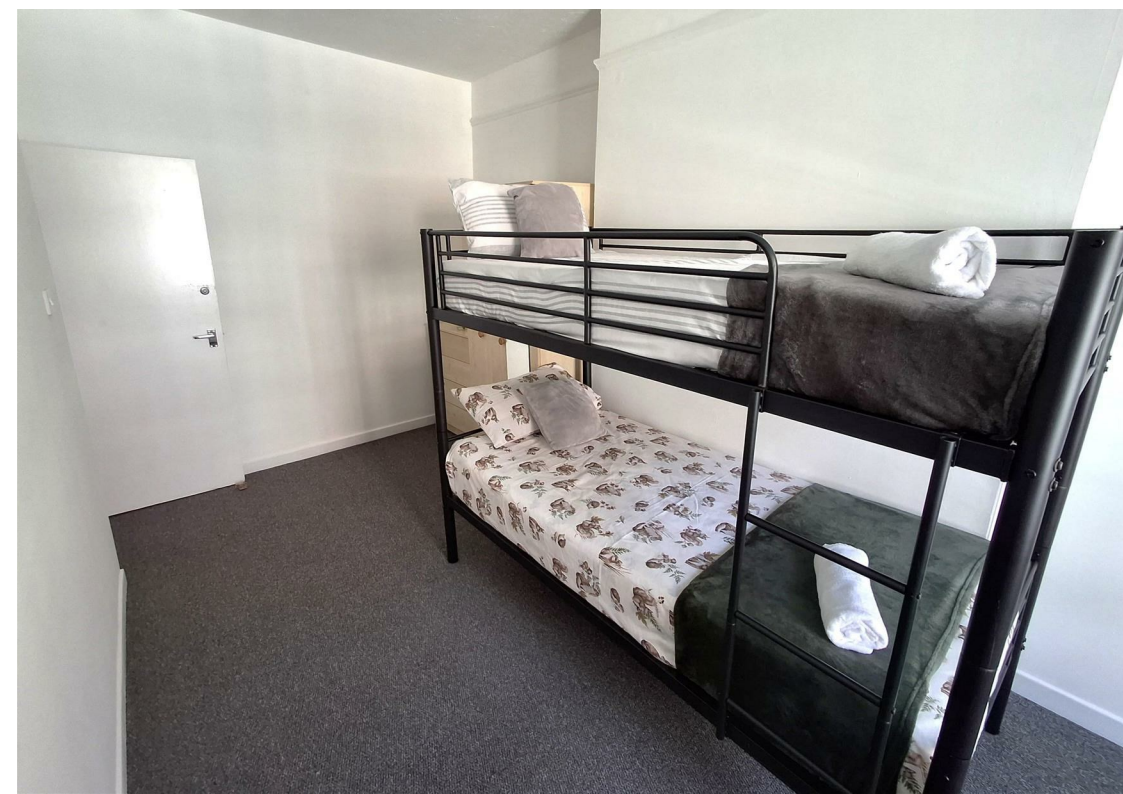
, Bournemouth, BH1 1LU

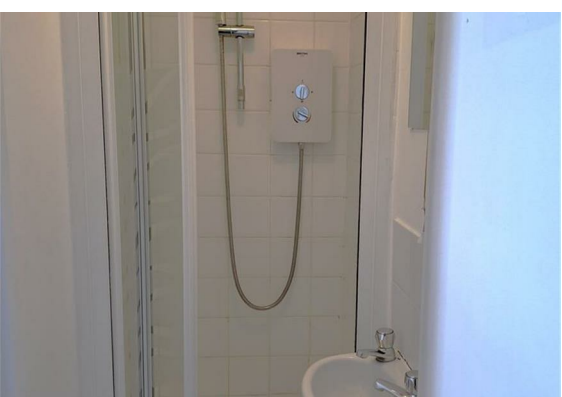
Four bedroom apartment above shop to let in Bournemouth Town Centre. Fully furnished 4 bedrooms, three double size, one single. Separate kitchen fully equipped, one family bathroom and a shower room. Open plan lounge area.

EPC rate: 54 | E

BCP Council tax Band: B

No Parking





## Floor Plan



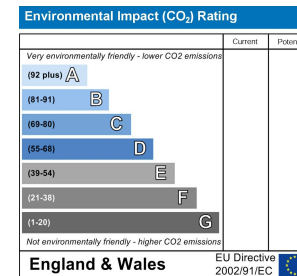
## Viewing

Please contact our Fully Managed Properties Office on if you wish to arrange a viewing appointment for this property or require further information.

## Area Map



## Energy Efficiency Graph



These particulars, whilst believed to be accurate are set out as a general outline only for guidance and do not constitute any part of an offer or contract. Intending purchasers should not rely on them as statements of representation of fact, but must satisfy themselves by inspection or otherwise as to their accuracy. No person in this firm's employment has the authority to make or give any representation or warranty in respect of the property.