



Ash Tree Close, Wimblington, March, PE15 0RJ

Popular Village Location - Semi Detached House - 3 Bedrooms - Kitchen/Diner & Lounge - First Floor Bathroom - Enclosed Rear Garden - Driveway - No Upward Chain – EPC Rating E - Call To View (01354) 696700

£220,000



Ground Floor

Entrance Hall

2.57m (8'5") x 1.10m (37")
Double glazed entrance door, radiator and door to:

Kitchen/Diner

5.10m (16'7") x 5.50m (18') max
Fitted with a matching range of base and eye level units with worktop space over, electric hob with extractor hood over and oven, 1+1/2 bowl stainless steel sink with tiled splashbacks, integrated slimline dishwasher, plumbing for washing machine, space for fridge/freezer, storage cupboard, ceiling spotlights and two double glazed windows to front.

Lounge

5.14m (16'10") x 3.55m (11'8")
Double glazed sliding door to rear, electric fire, electric radiator and stairs to first floor.

First Floor

Landing

Double glazed window to side, fitted carpet, airing cupboard and door to:

Bedroom 1

4.02m (13'2") x 2.99m (9'10")
Double glazed window to front, fitted carpet, fitted wardrobe(s) and radiator.

Bedroom 2

3.57m (11'9") x 2.75m (9') max
Double glazed window to rear, built in cupboard and electric radiator.

Bedroom 3

3.03m (9'9") x 1.96m (6'5") max
Double glazed window to front, fitted carpet and electric radiator.

Bathroom

2.21m (7'3") x 1.61m (5'3")
Fitted three-piece suite comprising WC, vanity wash hand basin and bath with shower over, tiled walls, heated towel rail and double-glazed window to rear.

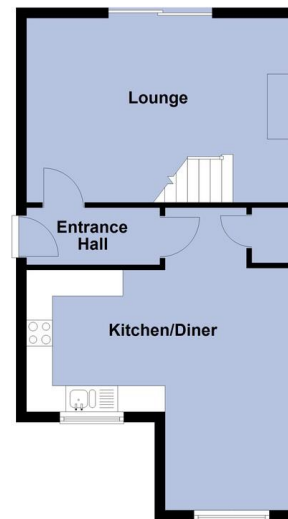
Outside

The property has a driveway and garden to the front. Also, a garden to the rear which is fully enclosed, partly laid to lawn and patio with two storage sheds.

Please note: The property is fully connected to fibre.

EPC Rating - E

Ground Floor



First Floor



Total area: approx. 80.5 sq. metres (866.3 sq. feet)



Call to arrange a viewing **01354 696700** **T Payne & Co**
SALES & LETTINGS

Agents Notes: Whilst every care has been taken to prepare these sales particulars, they are for guidance purposes only. All measurements are approximate and for general guidance purposes only and whilst every care has been taken to ensure their accuracy, they should not be relied upon and potential buyers are advised to recheck the measurements.