

shepherds

A better home
moving experience



106 Mangrove Road

Hertford, SG13 8AN

Price Guide £850,000



106 Mangrove Road

Hertford, SG13 8AN

SOLD BY SHEPHERDS - Chain-Free Detached Home in Prime South-Side Location

Located in one of the town's most prestigious and highly sought-after neighbourhoods, this rarely available detached family home offers generous accommodation and an enviable setting — all chain free. Situated on the desirable south side and within easy walking distance to well-regarded local schools, the property combines space, convenience, and long-term potential.

The ground floor features a bright and expansive 20'7" sitting room, a formal 13' dining room ideal for entertaining, and a well-proportioned 20' kitchen. A ground floor cloakroom adds everyday practicality, while upstairs you'll find a modern shower room and ample bedroom space.

Outside, a beautifully maintained west-facing rear garden extends nearly 69 feet, offering a peaceful and private retreat. The home also benefits from a garage and a generous front driveway with ample off-street parking.

This is a fantastic opportunity for families or discerning buyers seeking a long-term home in an exceptional location. Early viewing is highly recommended.

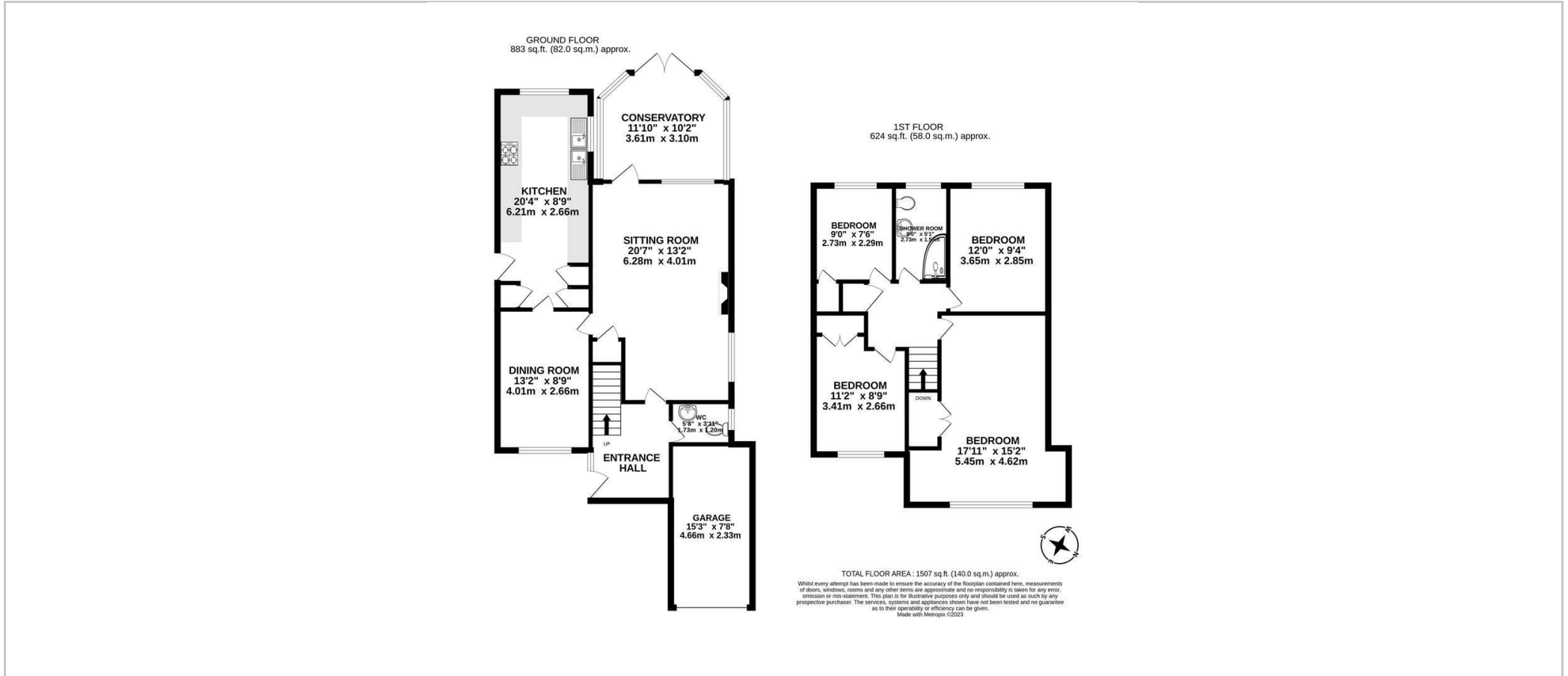




- OFFERED CHAIN FREE
- Highly sought after location on the south side of Hertford
- Four bedrooms
- 20' sitting room with separate dining room
- Spacious 20' kitchen
- Approx 68' mature west facing garden to rear
- First floor shower room and ground floor cloakroom
- Large driveway to front providing ample off street parking
- Garage
- Access to local favoured schooling



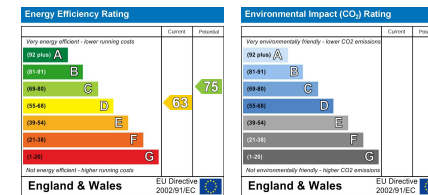
Floor Plan



Viewing

Please contact Shepherds of Hertford on 01992 551955 if you wish to arrange a viewing appointment for this property or require further information.

Energy Performance Graph



These particulars, whilst believed to be accurate are set out as a general outline only for guidance and do not constitute any part of an offer or contract. Intending purchasers should not rely on them as statements of representation of fact, but must satisfy themselves by inspection or otherwise as to their accuracy. No person in this firm's employment has the authority to make or give any representation or warranty in respect of the property.

Riverside House, 6 Millbridge, Hertford, SG14 1PY
Tel: 01992 551955 Email: enquiries@shepherdsfhertford.co.uk