



142 Sundowner Newport Road

Hemsby, Great Yarmouth, NR29 4NW

£49,950



3



1



1



F

## 142 Sundowner Newport Road

Hemsby, Great Yarmouth, NR29 4NW

Aldreds are pleased to offer this well presented detached holiday chalet situated on this quiet popular coastal village site located in the Newport area of Hemsby. The chalet offers accommodation including an open plan kitchen/living room, three bedrooms and refurbished shower room. The property benefits from double glazed windows and is being sold equipped with furnishings. Outside there are communal lawned gardens, nearby car parking and the chalet faces a westerly direction.

### Open Plan Kitchen/Living Room

#### Living Room Area

11'7" x 8'8" (3.55 x 2.65)

Part double glazed pvc entrance door, double aspect double glazed windows, tv point, fitted carpet, fireplace with electric fire, open access to:

#### Kitchen Area

15'0" x 8'6" (4.59 x 2.60)

Fitted with a range of wood trim finish wall and matching base units with wook effect worktops over, built in electric oven and four ring ceramic hob, single drainer sink unit, part tiled walls. built in airing cupboard housing the instant hot water heater, vinyl flooring, double glazed window to side aspect, door to:

#### Inner Lobby

Doors leading off to:

#### Bedroom 1

12'5" x 8'3" (3.79 x 2.53)

Including built in wardrobes, double glazed window to rear aspect, fitted carpet, double bed and drawers.

#### Bedroom 2

10'7" x 8'3" (3.24 x 2.53)

Plus a built in wardrobe, double glazed window to side aspect, fitted carpet, double bed, drawers and bedside cabinets.

#### Bedroom 3

9'7" x 8'7" (2.93 x 2.63)

Including a built in wardrobe cupboard, double glazed window to rear aspect, two single beds, fitted carpet.

#### Shower Room

Refurbished with a white suite comprising corner quadrant shower cubicle with electric shower fitting, low level wc with concealed cistern, vanity unit with inset wash basin, tiled walls, frosted double glazed window to side aspect, wall mounted chrome electric towel rail/radiator, vinyl flooring.





### Outside

To the front of the property is an area of paved sun trap terrace which faces a westerly direction beyond which are communal lawned grounds and nearby parking.

### Tenure

Leasehold.

99 year lease commencing from 1 October 2015 with approximately 88 years remaining

Site Fees 2025/2026 - £2,368.32 approx.

Site opens from 1st March to 31st October.

Dogs are allowed on the site.

### Services

Mains water, electric and drainage.

### Council Tax

Great Yarmouth Borough Council - Band 'A'

### Location

Hemsby is a coastal village approximately 7 miles north of Great Yarmouth. The tourist-based part of the village lies along Beach Road and is commonly known as Hemsby Beach. At the beach end of the road are a number of cafes, shops and amusement arcades, ten-pin bowling, bingo, a play area and many different machines. A variety of seaside-style cafes and restaurants are available, offering sit-down meals, take-away fish and chips and Chinese food. Fun fairs, crazy golf courses and children's rides also feature on a number of sites along the street.

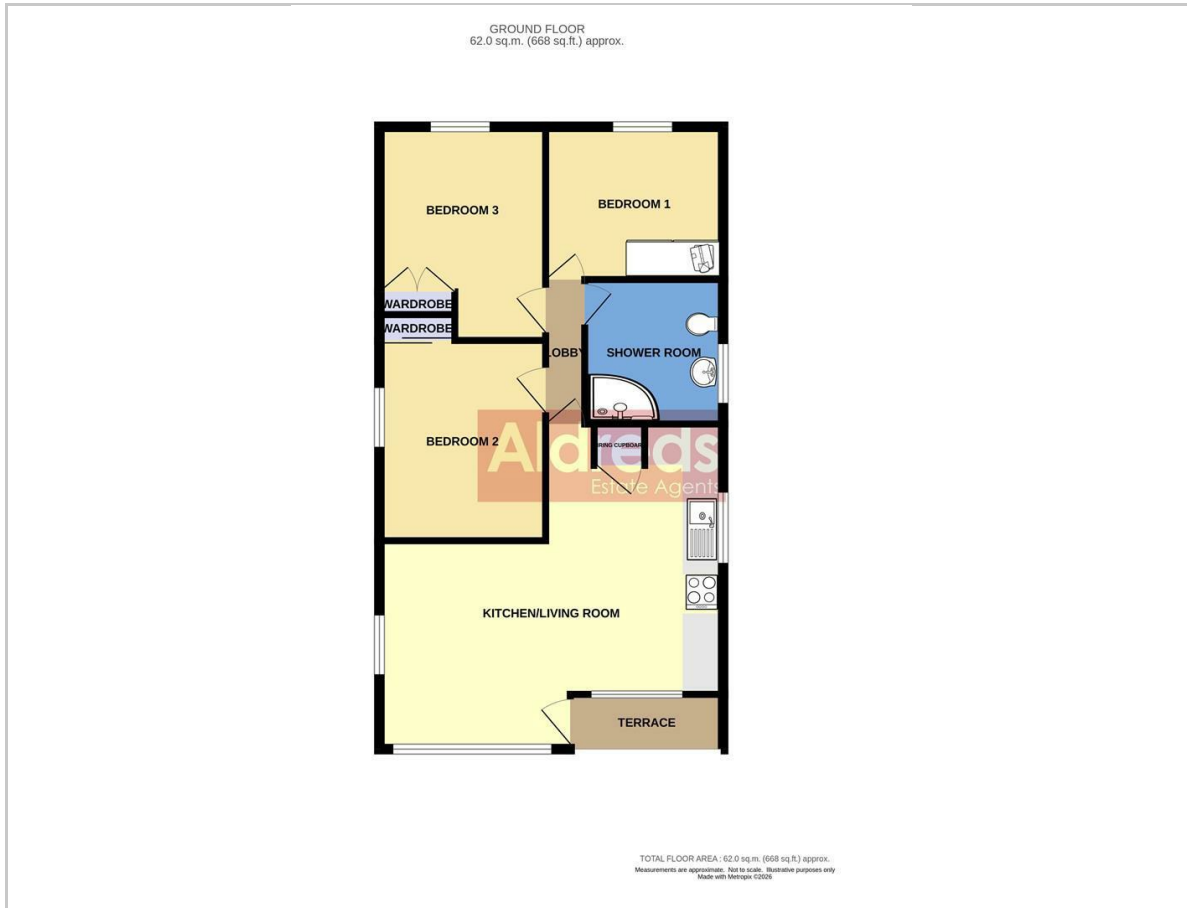
### Directions

From the Yarmouth office head north along the A149 Caister Road, continue past the Yarmouth Stadium, at the roundabout turn left onto the Caister Bypass, continue over the next roundabout into Jack Chase Way, continue over the next roundabout into Scratby Road, continue into Yarmouth Road, turn right into Newport Road, continue towards the end of the road, turn right into Sundowner Holiday Park, continue along the access road passing the site office on the left hand side, and turn immediately left. Follow the road right to the top of the site where the chalet can be found in the right hand corner of the car park.

Y12680/04/26/CF



## Floor Plan



## Viewing

Please contact our Aldreds Great Yarmouth Office on 01493 844891 if you wish to arrange a viewing appointment for this property or require further information.

### Disclaimer

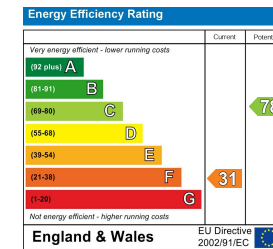
These particulars are issued on an understanding that all negotiations shall be conducted through Messrs. Aldreds. Please note: Messrs. Aldreds for themselves and for the vendors or lessors of this property whose agents they are given notice that: 1. Particulars are set out as a general outline only for guidance of intending purchasers or lessees, and do not constitute nor constitute part of, an offer or contract. 2. All descriptions, dimensions, references to condition and necessary permissions for use and occupation, and other details are given without responsibility and any intending purchasers or tenants should not rely on them as statements or representations of fact but must satisfy themselves by inspection or otherwise as to the correctness of each of them. 3. No person in the employment of Messrs. Aldreds has any authority to make or give any representation or warranty whatever in relation to this property. 4. If you are proposing to visit the property and are travelling some distance please check with Aldreds on the issue of availability prior to travelling. 5. Aldreds Property Consultants and associated services may offer additional services to the prospective purchaser for which they will be entitled to receive a commission.

Aldreds are pleased to be working with Mortgage Advice Bureau. They're an award-winning mortgage broker with over 1,400 advisers across the UK, and have access to over 12,000 mortgage products from over 90 lenders. Aldreds Estate Agents Ltd receive a commission of £200 on each completed case. Your home may be repossessed if you do not keep up repayments on your mortgage. There may be a fee for mortgage advice. The actual amount you pay will depend upon your circumstances. The fee is up to 1%, but a typical fee is 0.3% of the amount borrowed. Mortgage Advice Bureau is a trading name of Mortgage Seeker Limited which is an appointed representative of Mortgage Advice Bureau Limited and Mortgage Advice Bureau (Derby) Limited which are authorised and regulated by the Financial Conduct Authority. Mortgage Seeker Limited Registered Office: Lovewell Blake, Sixty Six North Quay, Great Yarmouth, Norfolk, NR30 1HE. Registered in England Number: 03721415. 6. Potential purchasers should check with their providers that the broadband and mobile phone coverage they would require is available.

## Area Map



## Energy Efficiency Graph



17 Hall Quay, Great Yarmouth, Norfolk, NR30 1HJ  
Tel: 01493 844891 Email: [yarmouth@aldreds.co.uk](mailto:yarmouth@aldreds.co.uk) <https://www.aldreds.co.uk/>

Registered in England Reg. No. 08945751 Registered Office: 17 Hall Quay, Great Yarmouth, Norfolk NR30 1HJ  
Directors: Mark Duffield B.S.c. FRICS. Dan Crawley MNAEA Paul Lambert MNAEA