



St. Stephens Crescent, W2

£600,000

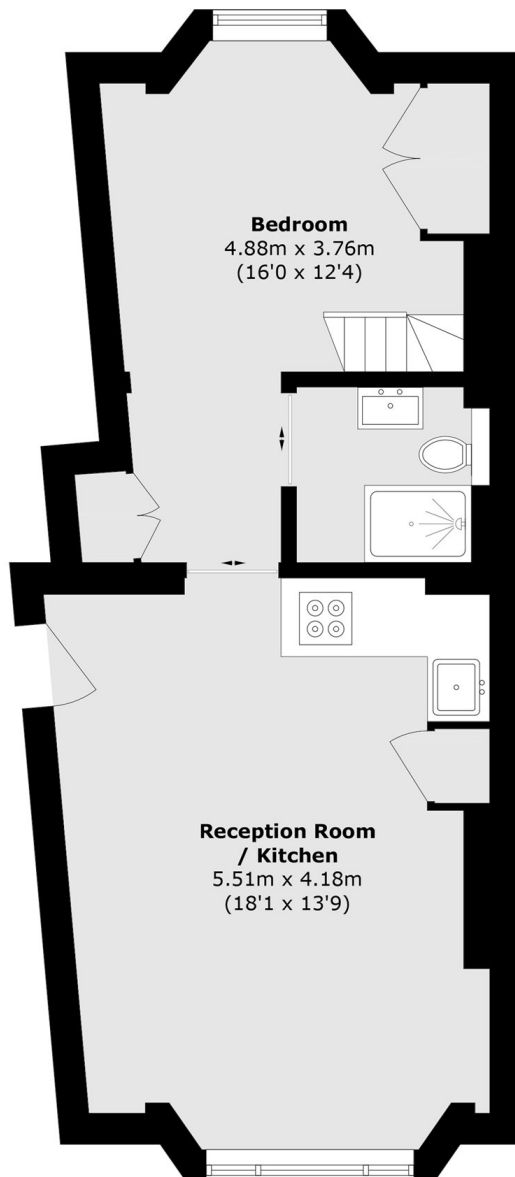
A beautifully presented raised ground floor apartment in a white stucco fronted building. The open plan kitchen and reception room has a high specification kitchen with SMEG appliances and the bedroom has built-in storage and a mezzanine office space. With a Share of Freehold, wooden floors and high ceilings throughout, this is an ideal first time purchase.

St Stephens Crescent W2 is a pretty residential road curving around St Stephens church and is ideally located for the shops, boutiques, restaurants and pubs in Notting Hill, Portobello Road and Westbourne Grove.

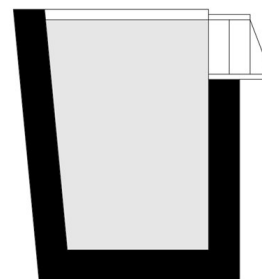
Features

- One Double Bedroom
- Mezzanine Office Space
- High Ceilings
- Open Plan
- White Stucco Fronted
- Share of Freehold
- Prime Location

St. Stephens Crescent, London, W2



Ground Floor



Mezzanine

Total area (approx.): 43.2 sq. m (465.0 sq. ft)