



14 Watling Street, Affetside

Offers Over £475,000

Miller Metcalfe
Every step of the way

14 Watling Street

Affetside, Bury

A Truly Exceptional Double Fronted Stone Cottage with Stunning Open Countryside Views

Occupying an enviable position in the heart of Affetside, with breathtaking open views to both the front and rear, this outstanding double fronted stone cottage has been sympathetically renovated to an exceptional standard, seamlessly blending contemporary luxury with an abundance of original character and charm.

The property has undergone a comprehensive renovation, including a full rewire, new windows and external doors, and a new central heating system with combi boiler and radiators throughout, offering peace of mind and modern efficiency throughout.

Every aspect of this beautiful home has been thoughtfully redesigned whilst retaining its timeless features, including exposed stone walls, original beamed ceilings, traditional latch doors and an abundance of period character throughout.

Deceptively spacious, the accommodation briefly comprises a welcoming and elegant lounge, a versatile second reception room ideal as a sitting room or home office, and an impressive open plan dining kitchen fitted with a stunning brand new contemporary kitchen, creating the perfect space for both everyday family living and entertaining. Completing the ground floor are a practical utility room and a stylish guest WC.

To the first floor are three generously proportioned bedrooms together with a spacious landing offering additional storage space. The luxurious four-piece family bathroom has been beautifully appointed with a brand new suite, providing a true spa-like retreat.

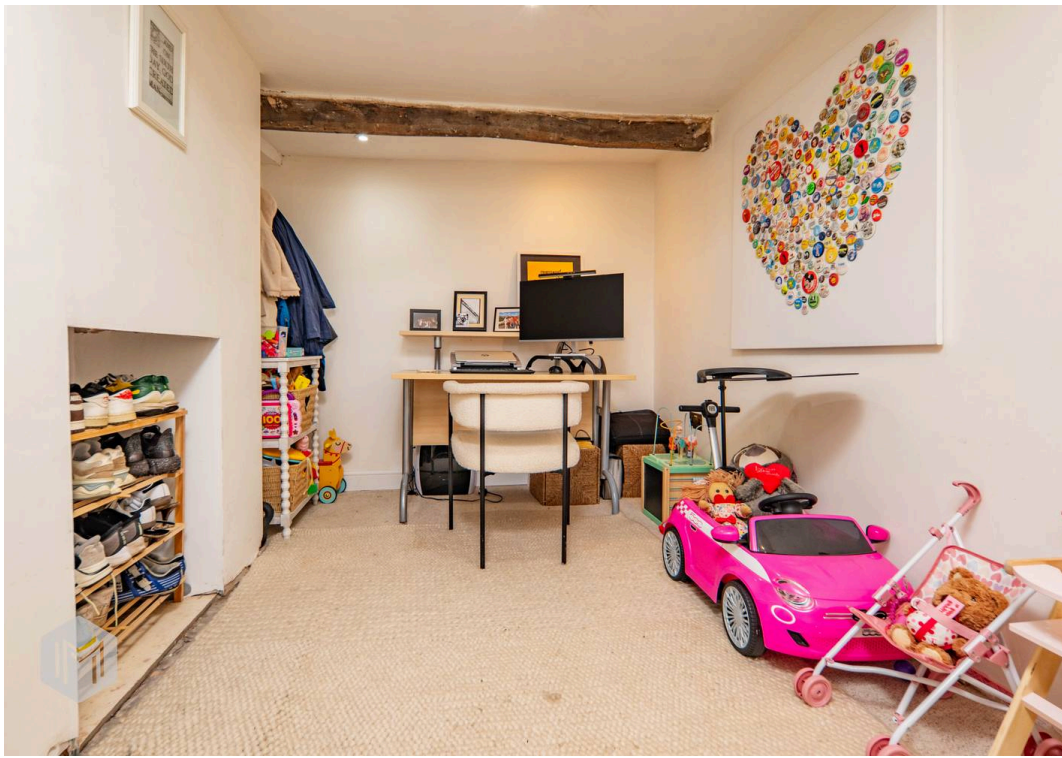
Externally, the property enjoys an enclosed front garden overlooking the surrounding countryside, while to the rear is a substantial enclosed gravelled garden offering an ideal space for outdoor entertaining or simply relaxing and taking in the spectacular rural views. A separate private parking space is conveniently located to the side of the property.

Situated in the highly sought-after village of Affetside, this remarkable home offers the perfect combination of idyllic countryside living with excellent access to nearby towns, amenities and transport links.

Properties of this calibre, finished to such an exacting standard whilst retaining so much original charm, rarely come to the market. Early viewing is highly recommended.

Council Tax band: E













Miller Metcalfe Bury

Miller Metcalfe, 9-11 Market Place Market Street - BL9 0AH

0161 3580910 • bury@millermetcalfe.co.uk • millermetcalfe.co.uk/

Miller Metcalfe
Every step of the way