



HUNTERS[®]
HERE TO GET *you* THERE

4 1 3

HUNTERS C

St. James Road, Southampton

Offers In Excess Of £500,000



This substantial four bedroom Victorian semi-detached property is brimming with character and is conveniently situated in the residential area of Shirley. This property offers stunning original architecture whilst also providing you with a welcoming homely feel.

Upon entering the home you will be met with an impressive brightly lit hallway, and leading off here you will enter the stunning family room, featuring a bay window and a stylish fireplace.

Following from this you will then find the property's captivating dining area, this area offers plenty of space for family gatherings to enjoy, you will also find double French doors leading out to a walk way towards the rear garden, perfectly designed for al fresco entertaining.

As you proceed through, you will be met with a charming well-proportioned kitchen area, with a delightful sun-lit conservatory to the rear, through here is where you can enter the property's lovely rear garden that features both a lawn and patio all perfect for friends and family to enjoy.

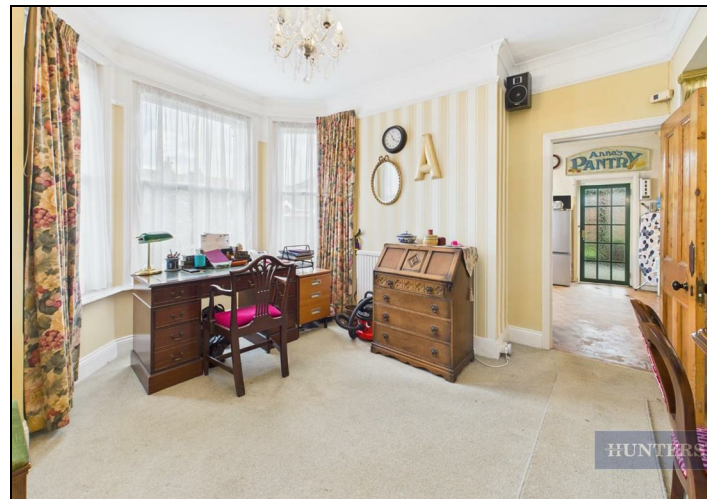
On the first floor are four well-proportioned bedrooms, all with natural light beaming in, and three of them feature built in storage spaces. On this floor is also a large family bathroom.

To impress further there is the double garage to the rear of the property; providing off-road parking and storage space.

With excellent local amenities and transport links nearby and shops, coffee shop & pharmacy opposite, an early viewing is highly recommended to truly appreciate the spacious accommodation and fantastic potential opportunity that is unique property has to offer.

KEY FEATURES

- Semi-detached Victorian House
 - Four-bedrooms
 - Double garage
 - Dining area
- Rear garden with patio space
 - Rear conservatory
 - Ample storage spaces
 - Ground floor W/C
 - Off-road parking
- Potential for improvement





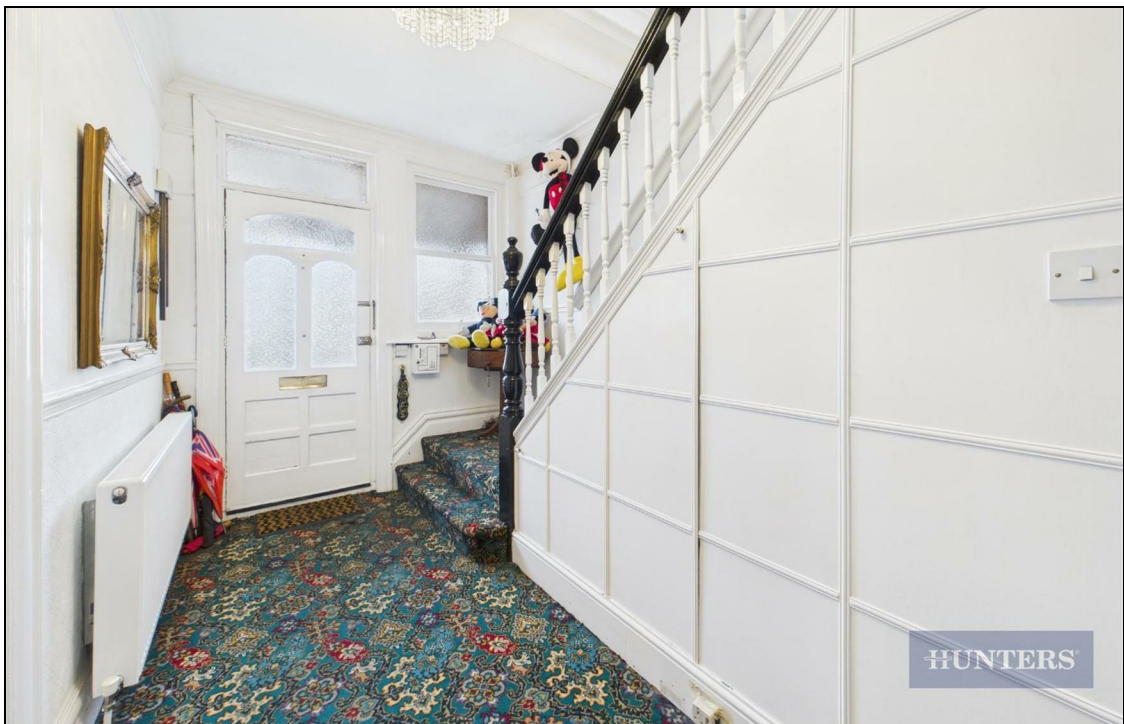
HUNTERS



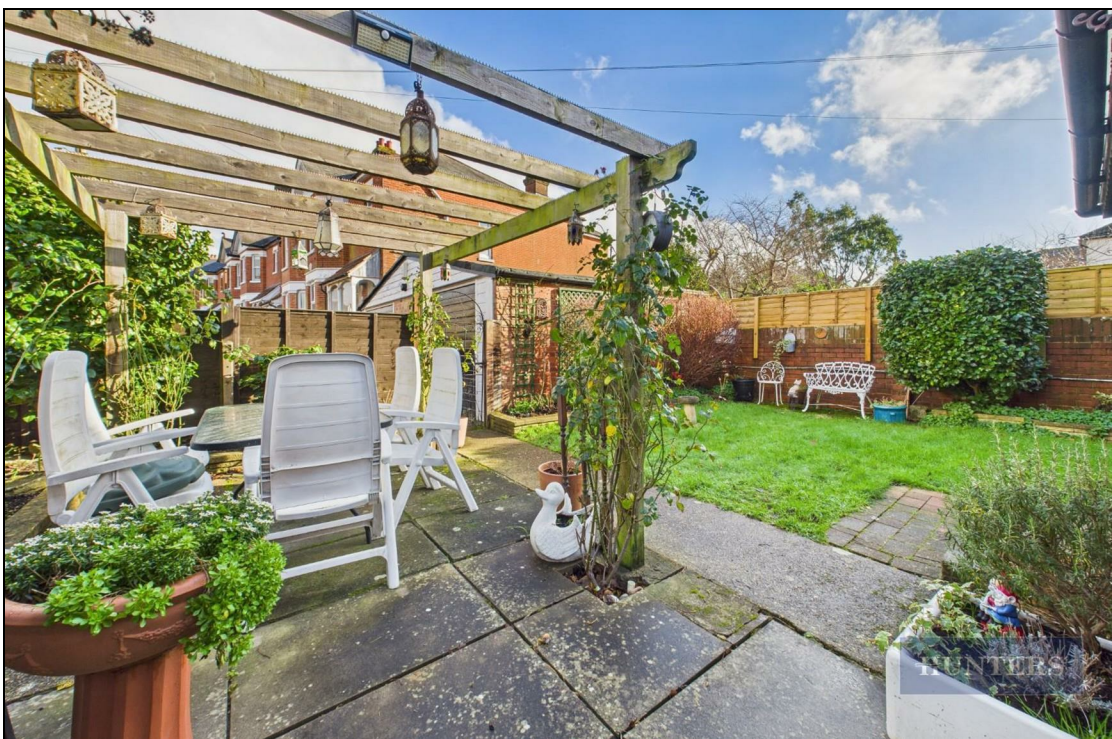
HUNTERS



HUNTERS



HUNTERS





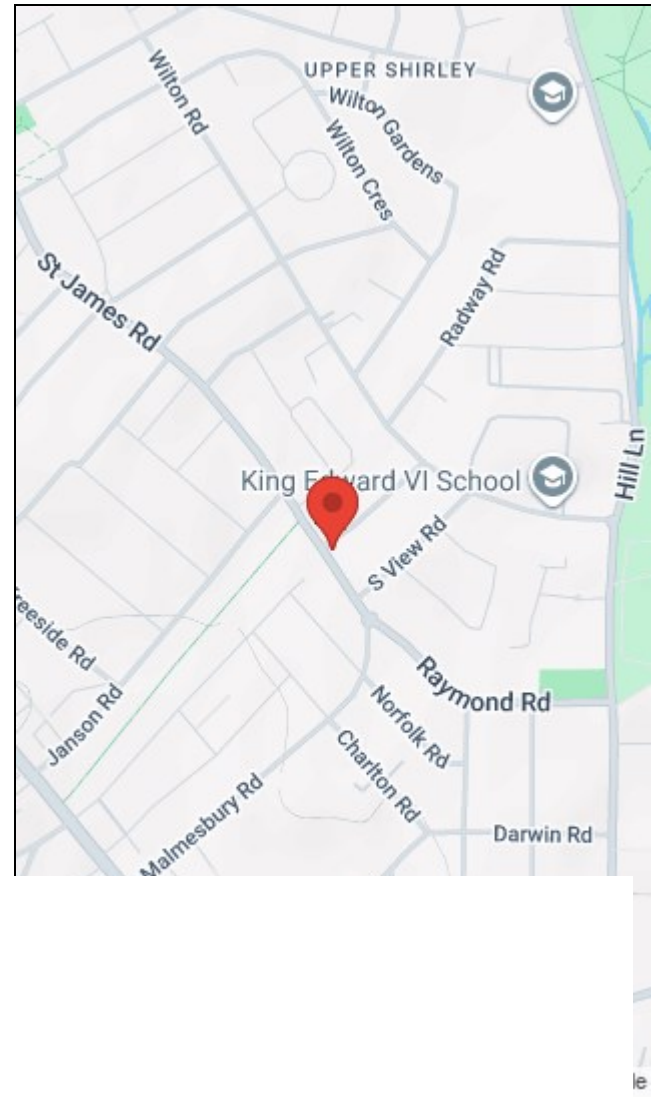
HUNTERS

Approximate total area⁽¹⁾
 185.6 m²
 1998 ft²

(1) Excluding balconies and terraces

Calculations reference the RICS IPMS 3C standard. Measurements are approximate and not to scale. This floor plan is intended for illustration only.

GIRAFFE 360



Energy Efficiency Rating		Environmental Impact (CO ₂) Rating	
Current	Potential	Current	Potential
Very energy efficient - lower running costs		Very environmentally friendly - lower CO ₂ emissions	
(92 plus) A		(92 plus) A	
(81-91) B		(81-91) B	
(69-80) C		(69-80) C	
(55-68) D		(55-68) D	
(39-54) E		(39-54) E	
(21-38) F		(21-38) F	
(1-20) G		(1-20) G	
Not energy efficient - higher running costs		Not environmentally friendly - higher CO ₂ emissions	
69	74		
England & Wales	EU Directive 2002/91/EC	England & Wales	EU Directive 2002/91/EC

38 Bedford Place, Southampton, Hampshire, SO15 2DG | 02380 987 720
southampton@hunters.com | www.hunters.com



This Hunters business is independently owned and operated by Clegg Properties Ltd | Registered Address 27 Westfield Road, Lymington, Hampshire, England, SO41 3PZ | Registered Number: 06421594 England and Wales | VAT No: 188 0548 76 with the written consent of Hunters Franchising Limited.