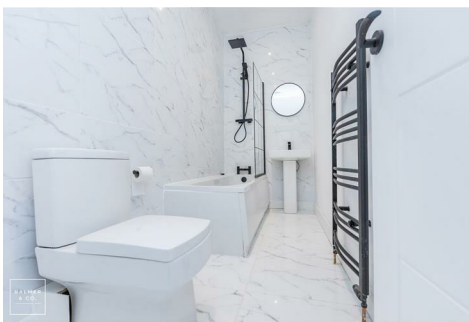
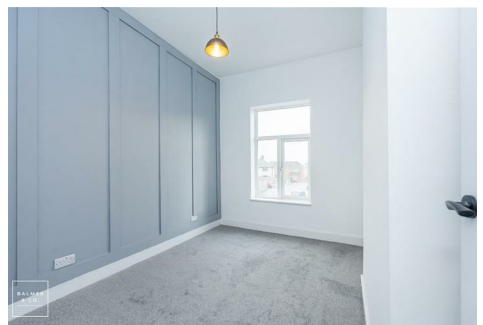
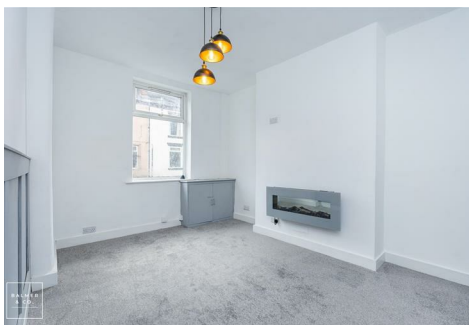
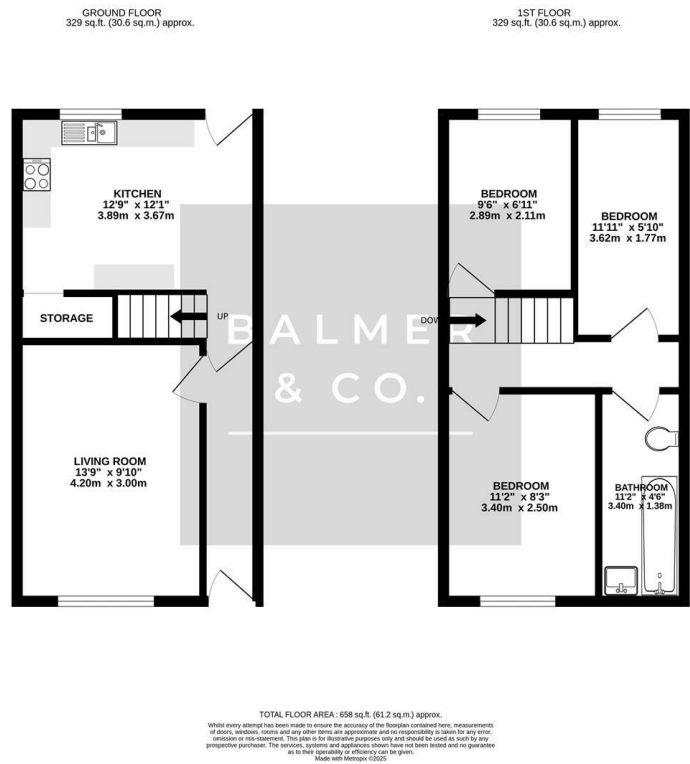


Atherton Road, Wigan, WN2 4SB
Offers Over £130,000



BALMER & CO in LEIGH are delighted to offer FOR SALE this mid terrace property on Atherton Road in Hindley Green. Offered with NO ONWARD CHAIN, this property has been fully renovated throughout and would make a perfect first time buy. The ground floor comprising in brief; entrance hallway, living room and modern fitted kitchen. To the first floor are three bedrooms, one double and two singles, with a part tiled bathroom suite. Externally the property is pavement fronted whilst to the rear there is an enclosed, low maintenance yard. Early viewings highly recommended, all enquiries welcome.

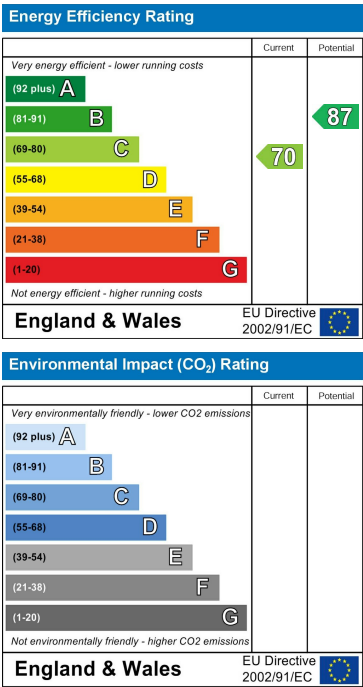
Floor Plan



Area Map



Energy Efficiency Graph



These particulars, whilst believed to be accurate are set out as a general outline only for guidance and do not constitute any part of an offer or contract. Intending purchasers should not rely on them as statements of representation of fact, but must satisfy themselves by inspection or otherwise as to their accuracy. No person in this firms employment has the authority to make or give any representation or warranty in respect of the property.