



# OAKFIELD



Athelstan Road, Hastings, TN35 5JF

£1,250 Per Calendar Month





## Athelstan Road, Hastings, TN35 5JF

A beautifully presented two-bedroom Victorian mid-terraced house, located in the highly sought-after Clive Vale area of Hastings. Ideally positioned within easy walking distance of local schools, bus routes, the East Hill, Country Park, and the historic Old Town with its shops, restaurants, and seafront.

The property has been redecorated and offers well-arranged accommodation over two floors. On the ground floor there is a living room with bay window and feature fireplace, a separate dining area with an opening to a modern fitted kitchen with integrated oven and hob, with access to the rear garden.

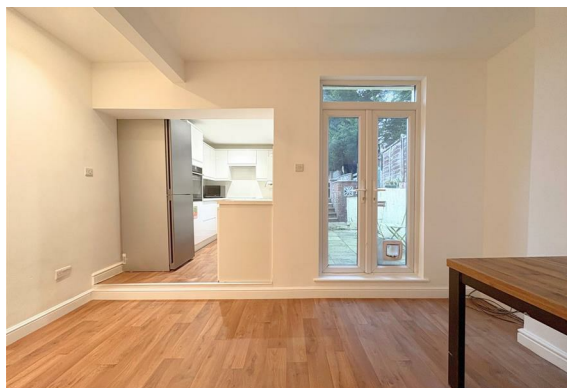
Upstairs, the first floor comprises a modern bathroom with shower over bath and two well-proportioned bedrooms, both with built-in storage.

Further benefits include gas central heating, double glazing, a rear garden and and private driveway.

Please note:

An annual household income of £37,500 will be required for the affordability criteria of this property.

The minimum tenancy length is 6 Months.  
Available Early February 2026.







### Living Room

12'6" x 10'10" (3.81m x 3.30m )

### Dining Room

14'1" x 10'3" (4.30m x 3.13m )

### Kitchen

11'6" x 6'3" (3.51m x 1.91m)

### Bedroom One

14'2" x 10'7" (4.32m x 3.23m)

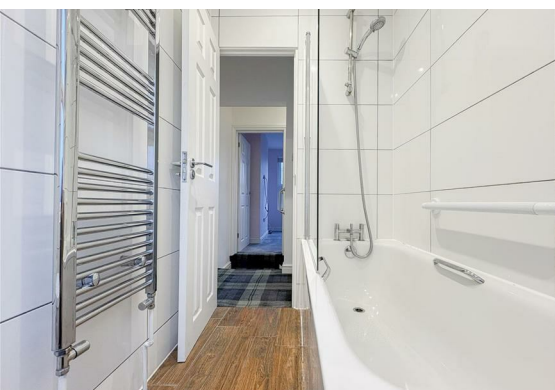
### Bedroom Two

10'3" x 8'0" (3.13m x 2.45m)

### Bathroom

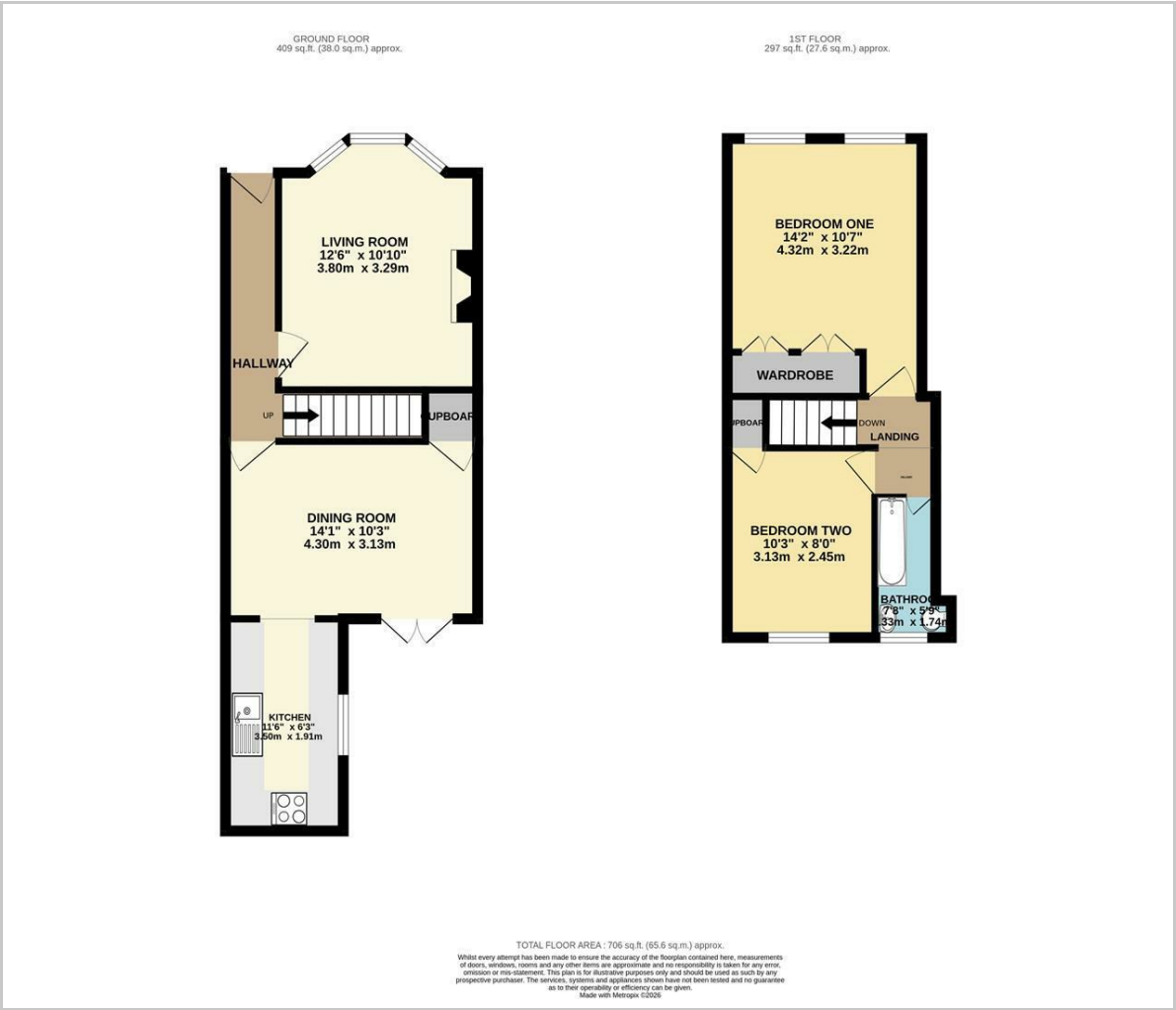
7'8" x 5'9" (2.34m x 1.75m)

**Council Tax Band B - £1,986.55 Per Annum**





Floor Plan

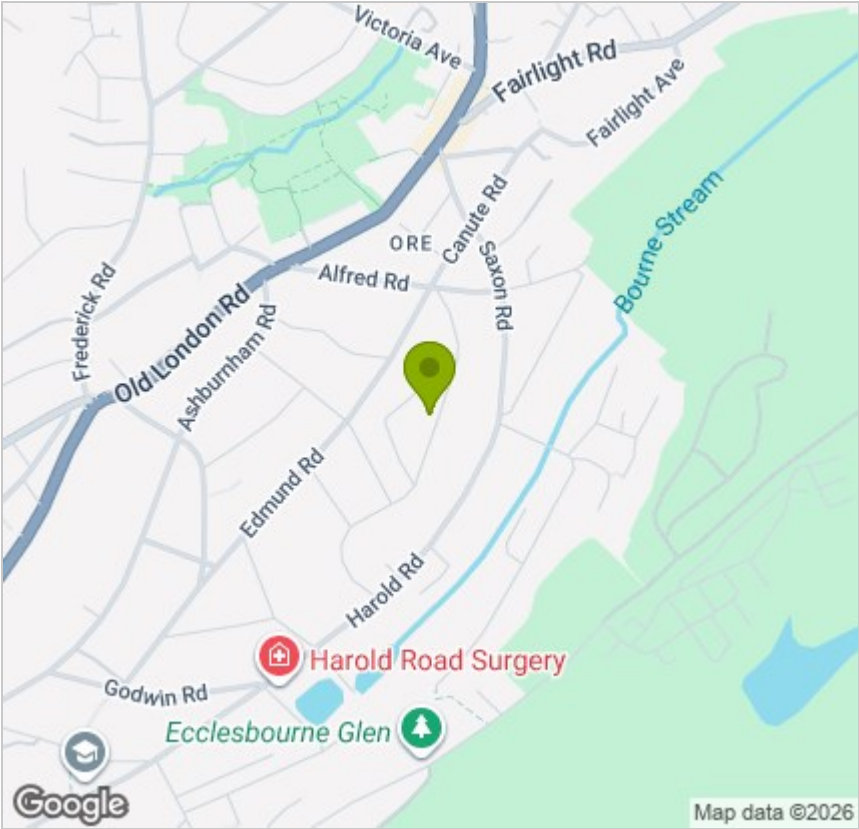


Viewing

Please contact us on 01424 446644 if you wish to arrange a viewing appointment for this property or require further information.

These particulars, whilst believed to be accurate are set out as a general outline only for guidance and do not constitute any part of an offer or contract. Intending purchasers should not rely on them as statements of representation of fact, but must satisfy themselves by inspection or otherwise as to their accuracy. No person in this firm's employment has the authority to make or give any representation or warranty in respect of the property.

Area Map



Energy Efficiency Graph

