



## BURTON STREET, WC1H

£800,000

This two bedroom apartment set within a charming period building on one of Bloomsbury's most characterful and sought-after residential streets. The property features a bright and generously proportioned living area, enhanced by tall sash windows that fill the space with natural light, a contemporary separate kitchen with modern appliances and ample storage.

- Modern Appliances
- 863 Sq Ft
- Ample Storage
- Period Building
- Tall Sash Windows
- Transport Links

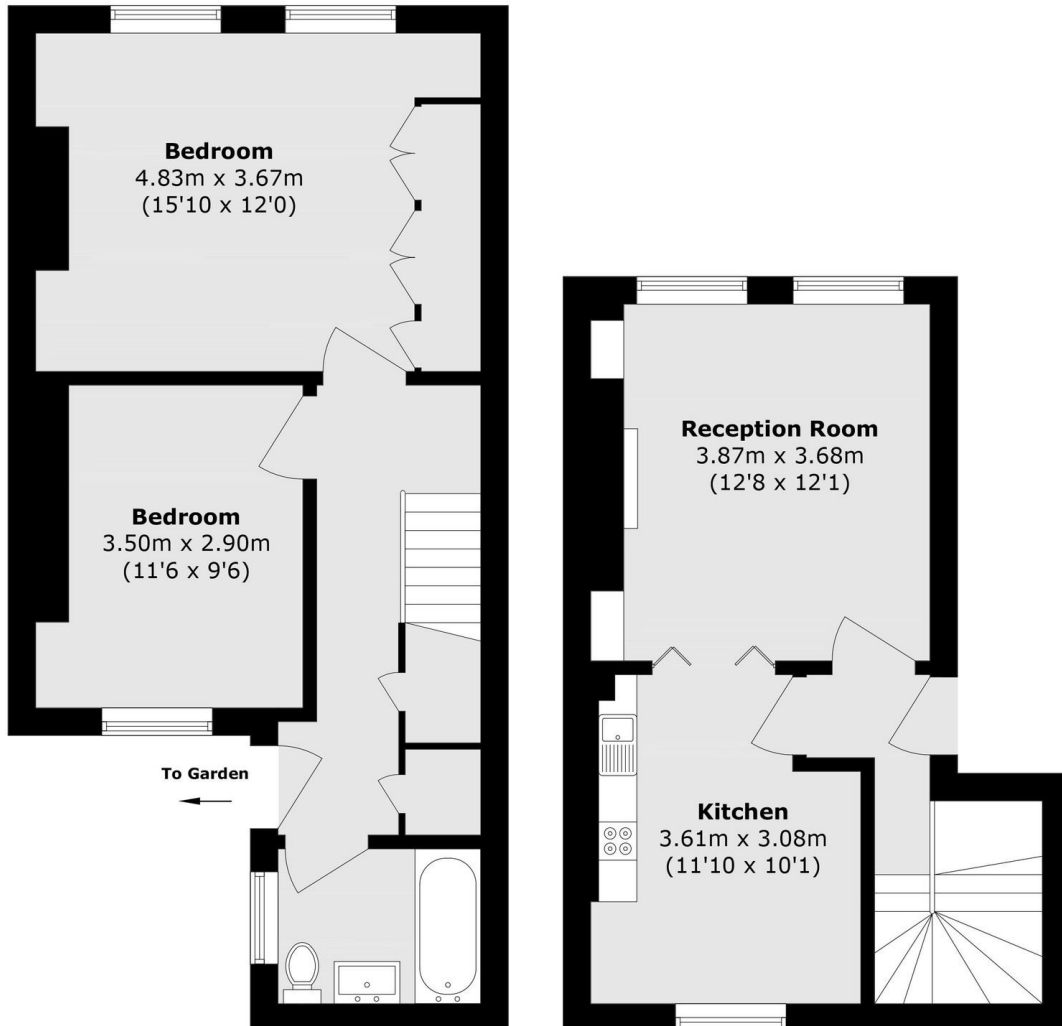


## ABOUT THE HOME

Only a short walk from UCL, the British Library, Brunswick Centre shops, and superb transport links including the Piccadilly Line at Russell Square and national/international rail at King's Cross St Pancras. This apartment is perfect for professionals, students, or anyone seeking a stylish home in the heart of central London.







**Lower Ground Floor**

**Ground Floor**

Total area (approx.): 73.0 sq. m (785.7 sq. ft)

**LiFE RESIDENTIAL**

11 Flagstaff House, London,  
SW8 2LZ

Sales: 020 7476 1408

Lettings: 020 7582 7989

Energy Rating: E. We aim to make our particulars both accurate and reliable. However they are not guaranteed; nor do they form part of an offer or contract. If you require clarification on any points then please contact us, especially if you're traveling some distance to view. Please note that appliances and heating systems have not been tested and therefore no warranties can be given as to their good working order.