



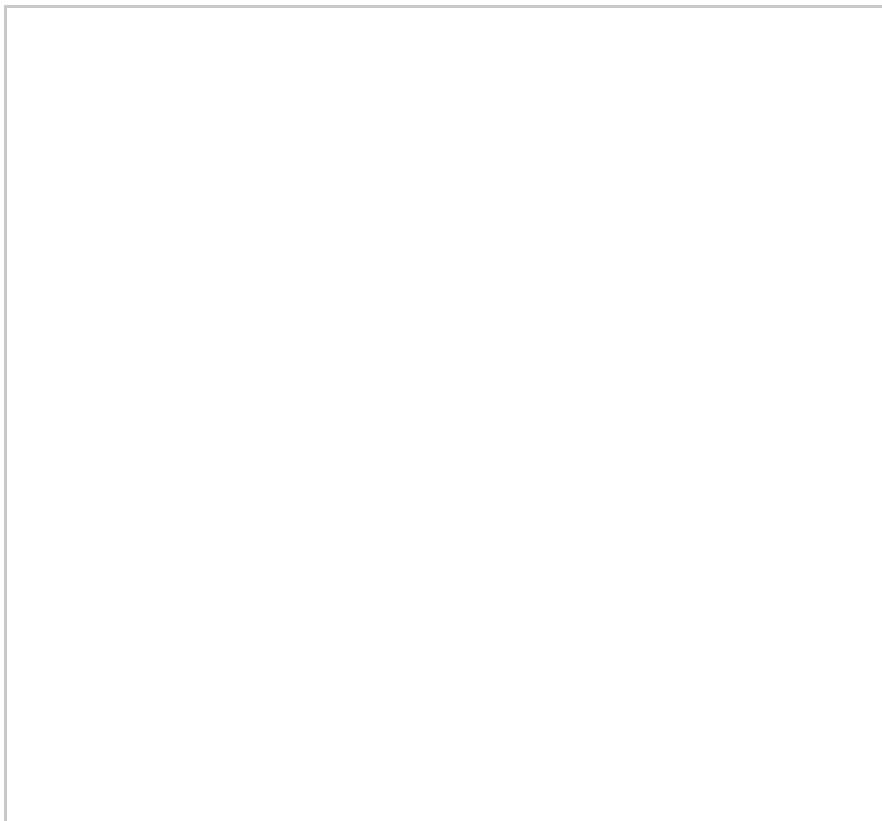
74 Rosamond Road

, Bedford, MK40 3UQ

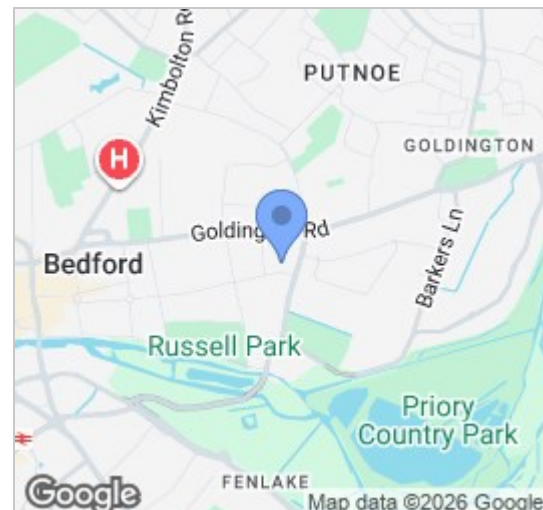
£1,600 Per Month



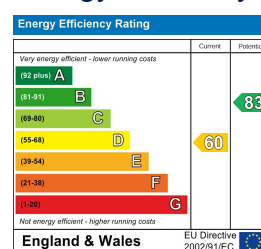
Floor Plan



Area Map



Energy Efficiency Graph

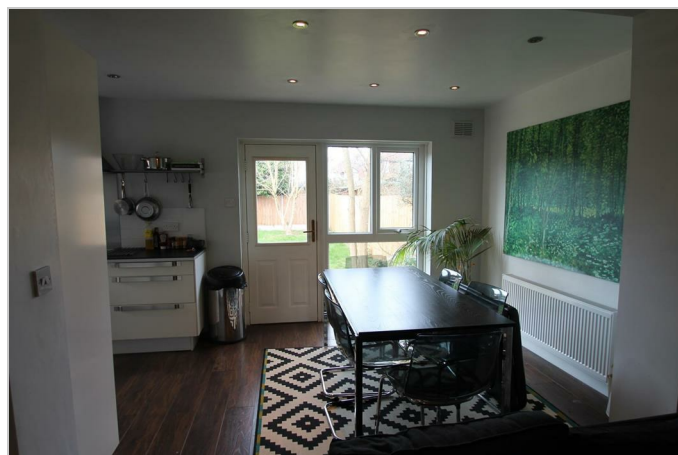
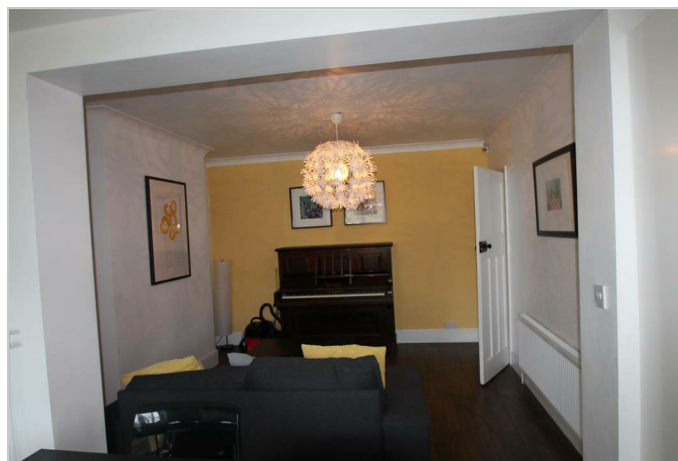


Viewing

Please contact our Bedford Office on 01234 216612 if you wish to arrange a viewing appointment for this property or require further information.

- Semi
- 2 Receptions
- Council Tax Band D
- Parking
- Washing Machine
- 3 Beds
- 2 Bathrooms
- Unfurnished
- Garden
- Dishwasher

A beautifully presented three bedroom family house located on the edge of the popular Castle Road area of Bedford with easy access to its many amenities and attractions. The downstairs accommodation comprises a front living room, large bathroom with stunning free standing bath, further living room at the rear which opens out into an extensive kitchen/breakfast room with integrated fridge/freezer, dishwasher, washing machine, oven and electric hob. Upstairs are three double bedrooms and a further bathroom with shower over bath. The rear garden is fully enclosed and easy to maintain with a small storage building. Driveway parking



163 Castle Road, MK40 3RT

Tel: 01234 216612

www.hollandsmith.co.uk