

Drayton Park, N5

£525,000

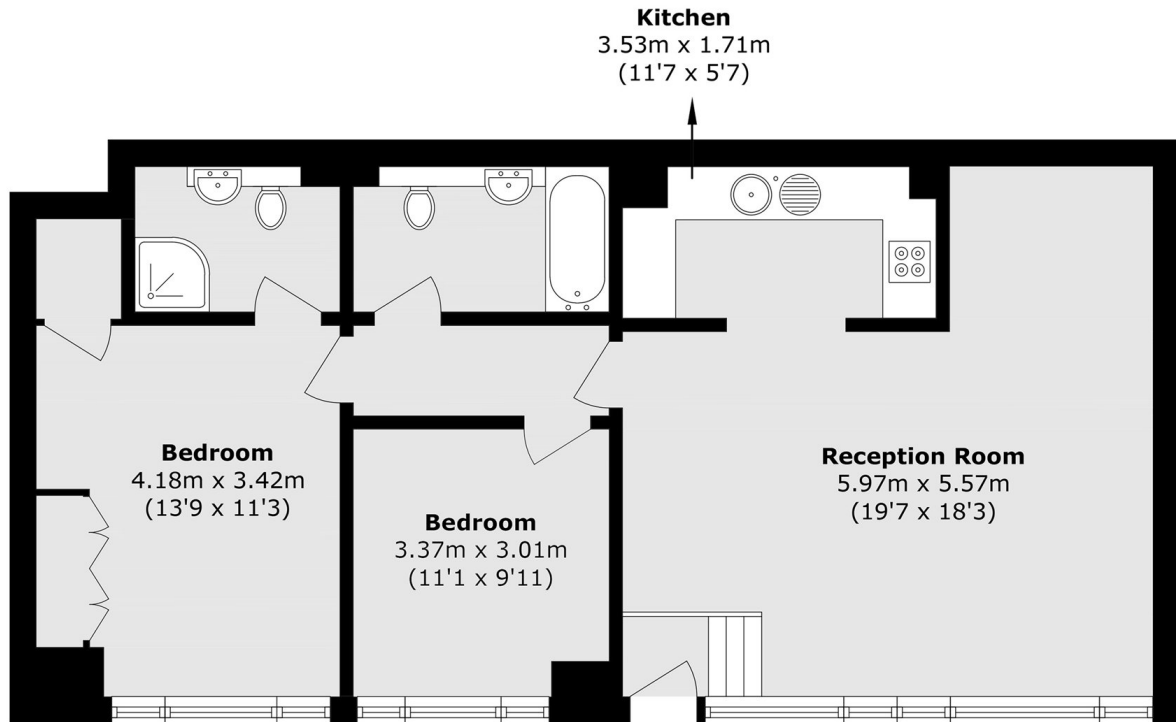
This stylish two bedroom apartment is bright and spacious featuring an impressive open plan kitchen, reception and dining room, two good sized bedrooms, and en-suite bathroom, On-Site Concierge, terrace and parking.

Located close to Drayton Park, Arsenal, and Highbury & Islington stations, benefitting from quick access into Central London. The apartment benefits from local amenities, cafés and restaurant's nearby.

Features

- Two Double Bedrooms
- Two Bathrooms
- Private Outside Space
- Secure Parking
- Open-Plan Kitchen
- Communal Roof Terrace
- Offers Over £525,000

Drayton Park, London, N5



Total area (approx.): 74.3 sq. m (799.7 sq. ft)