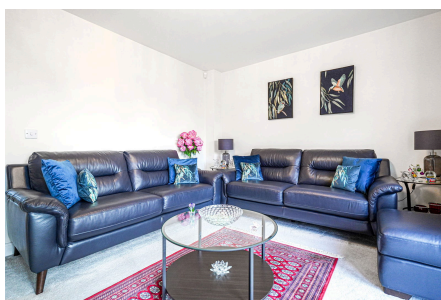


## Stadium Road, Hall Green

£330,000

 3  2  1



A beautifully presented three-bedroom home set over three floors in a sought-after Hall Green location. The property features a spacious lounge with French doors leading to a south-facing garden, modern bathrooms, and ample storage throughout. The top floor offers a large bedroom with a walk-in wardrobe and ensuite, perfect as a principal suite. Close to local amenities, schools, and transport links, this home combines comfort, space, and convenience.

3 Union Road, Shirley, Solihull B90 3BT

sales • new homes • land • commercial • mortgages • auction

## Key Features

- Open Plan Lounge/Kitchen/Diner
- Family Bathroom
- Spacious recently constructed semi detached property
- Rear Garden
- Freehold
- Three Double Bedrooms
- Modern Ensuite to principal bedroom
- Parking
- Guest Cloakroom
- EPC Rating B

