



3 Bedrooms | 1 Bathrooms | 2 Reception Rooms

Haydn Avenue | Purley | CR8 4AE

£550,000

LOFT

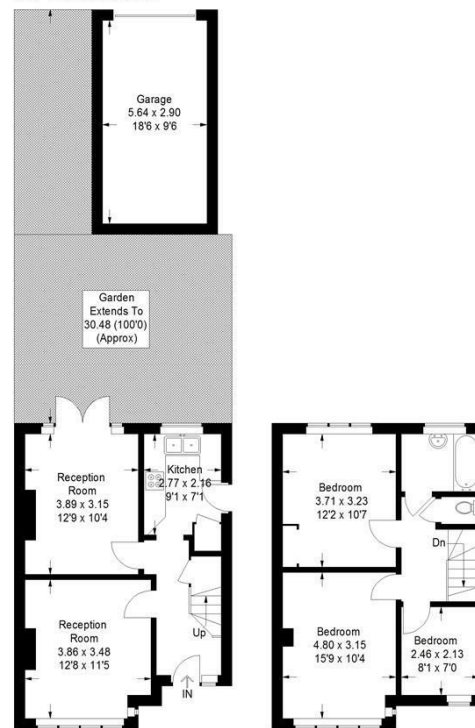
Haydn Avenue |
Purley | CR8 4AE
£550,000

- Chain free semi-detached family home
- Newly refurbished throughout and ready to move into
- Scope to reconfigure layout and create open plan living
- Large rear garage with easy access and power
- Stunning views from the bedrooms
- Excellent location for transport links and amenities
- Great schools and nurseries nearby
- *Some photos have been virtually staged and are for marketing purposes only*



Haydn Avenue, CR8

Approximate Gross Internal Area
82.3 sq m / 886 sq ft
Garage = 16.6 sq m / 179 sq ft
Total = 98.9 sq m / 1065 sq ft



Ground Floor

First Floor

This plan is for layout guidance only. Not drawn to scale unless stated. Windows and door openings are approximate. Whilst every care is taken in the preparation of this plan, please check all dimensions, shapes and compass bearings before making any decisions reliant upon them. (ID1218601)

EPC Rating: C

Ground Floor

Entrance

Reception Room
12'8" x 11'5" (3.86m x 3.48m)

Reception Room
12'9" x 10'4" (3.89 x 3.15)

Kitchen
9'1" x 7'1" (2.77 x 2.16)

First Floor

Bedroom
12'2" x 10'7" (3.71 x 3.23)

Bedroom
15'9" x 10'4" (4.80m x 3.15m)

Bedroom
8'1" x 7'0" (2.46m x 2.13m)

Bathroom

WC

Outside

Garden

0208 660 8070

www.loft-estates.co.uk

23a High Street, Purley, CR8 2AF