



Bramley Crescent, Bearsted, Maidstone, Kent, ME15 8JZ

Price £375,000



This exceptionally well-positioned two bedroom chalet-style residence is located in the sought-after road of Bramley Crescent on the edge of an established residential development in Bearsted.

Accessed via a substantial triple-length driveway alongside a well-tended front garden, you step inside the front door into the inviting entrance hall which leads to a bright and spacious sitting room, a dining room with a staircase leading to the upstairs bedroom, a well-appointed kitchen, and a bathroom with a separate WC. The first floor boasts a generous double bedroom complete with eaves storage.

Externally, a carport covers part of the driveway, while the rear garden is predominantly laid to lawn, offering a high degree of privacy. This delightful outdoor space is enhanced by flower and shrub borders, as well as a patio seating area at the rear, perfect for those who enjoy soaking up the sun.

Madginford offers a variety of amenities, including shops, a library, and schools. The charming village centre of Bearsted, with its historic buildings, green spaces, sports clubs, pubs, restaurants, church, and a London line station, is close by. Mote Park's beautiful grounds are within a few minutes walk, and there's easy access to Maidstone town centre, approximately 3 miles away, via a frequent bus service. Tenure: Freehold. Council Tax Band: D. EPC Rating: Awaited.



GROUND FLOOR

Entrance Hall

Lounge

Dining Room

Kitchen

Conservatory/Garden Room

Bedroom 2

Bathroom

Separate Cloakroom

FIRST FLOOR

Bedroom 1

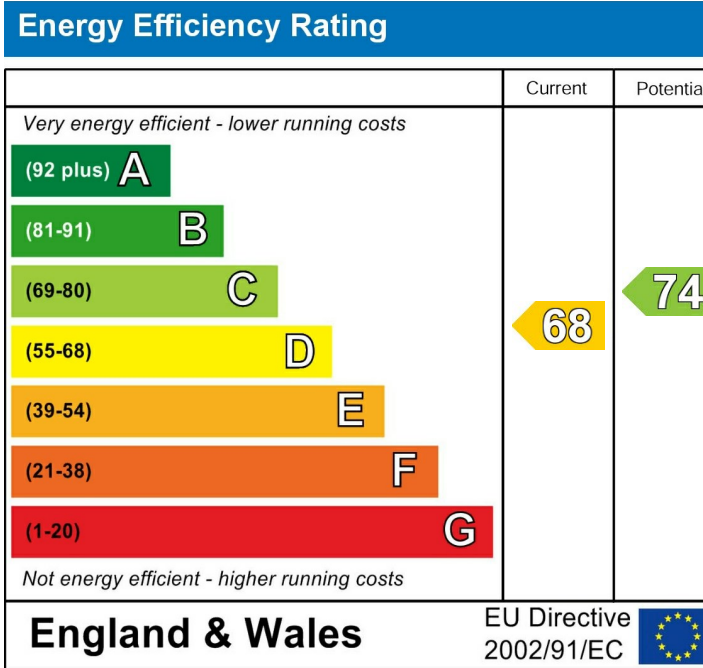
EXTERNALLY

Large Covered Carport

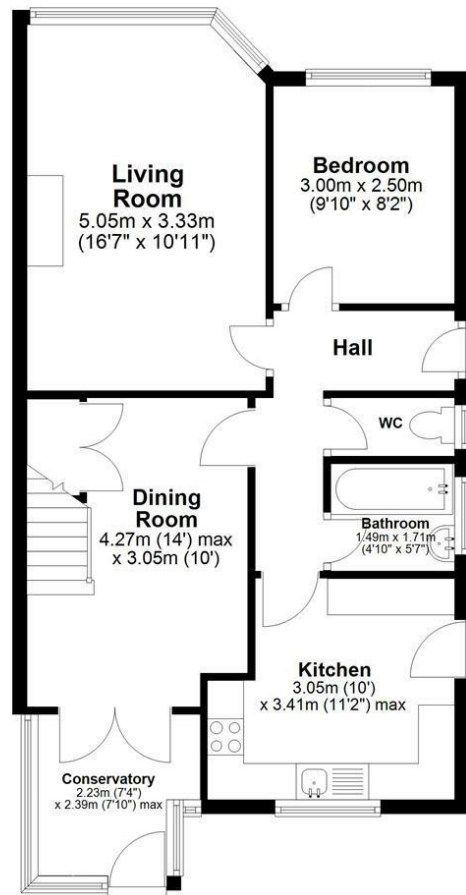
Gardens

VIEWING

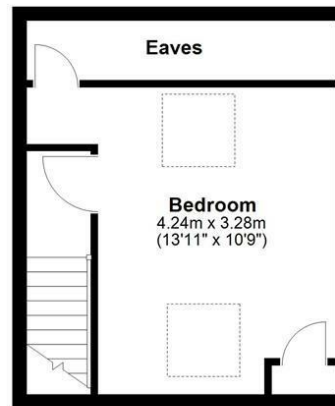
Strictly by arrangement with the Agent's Bearsted
Office, 132 Ashford Road, Bearsted, Maidstone, Kent
ME14 4LX. Tel: 01622 739574.



Ground Floor



First Floor



Total area: approx. 81.2 sq. metres (874.0 sq. feet)

