



Woodfield Road, offers over £400,000

- Extended Family Home
- No Ongoing Chain
- Flexible Accommodation
- Cul De Sac
- Sought After Location
- EPC Rating: C



 5
  2
  2



About the property

A spacious extended family home offering flexible accommodation offered for sale with no ongoing chain. Situated in a sought after location within close proximity to local shops, schools and amenities. Split over 3 floors the layout comprises; entrance hall, 2 reception rooms and kitchen/ diner to the ground floor, to the basement there is a utility room, cloakroom and bedroom. To the first floor the master bedroom benefits a walk in wardrobe space and en-suite shower room with a further 3 bedrooms and family bathroom. To the outside there is an enclosed low maintenance rear garden and off road parking to the front. This larger than average home has an abundance of potential with how to utilise the space offered for example home working. Viewing is strongly advised to appreciate.

Accommodation

Ground Floor

Entrance Hall

Living Room

12' 9" max x 10' 5" max (3.89m max x 3.17m max)

Dining Room

15' 7" max x 9' max (4.75m max x 2.74m max)

Kitchen

16' 8" max x 11' 2" max (5.08m max x 3.40m max)

Landing To Basement

boiler housed

Basement

Utility Room

11' 8" max x 11' 2" max (3.56m max x 3.40m max)



Cloakroom

sink and w.c

Bedroom 4

12' 1" max x 11' 2" max (3.68m max x 3.40m max)

First Floor

Landing

loft access

Bedroom 1

19' 1" max x 8' 7" max (5.82m max x 2.62m max)
walk in fitted wardrobe space, door to bedroom and door to;

En-Suite

shower unit, sink and w.c.

Bedroom 2

11' 9" x 10' 2" (3.58m x 3.10m)
fitted wardrobes

Bedroom 3

10' 3" max x 10' 1" max (3.12m max x 3.07m max)
fitted wardrobes

Bedroom 5

8' 6" x 6' 4" (2.59m x 1.93m)
door to storage

Bathroom

bath with over bath shower, sink and w.c.

Outside

To the front there is a driveway creating off road parking and shared steps with neighbouring property to rear garden.

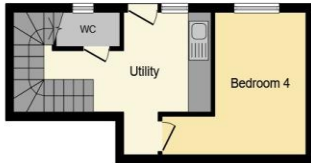
The rear garden is fully enclosed, low maintenance with a shed to remain for storage and side access to front via gate.

01443 222851

talbotgreen@peteralan.co.uk



Floorplan



Lower Ground Floor



Ground Floor



First Floor

This floorplan is for illustrative purposes only and is not drawn to scale. Measurements, floor-areas, openings and orientations are approximate. They should not be relied upon for any purpose and do not form any part of an agreement. No liability is taken for any error or mis-statement. All parties must rely on their own inspections.

Important Information

Note while we endeavour to make our sales details accurate and reliable, if there is any point which is of particular interest to you, please contact the office and we will be pleased to confirm the position for you. We have not personally tested any apparatus, equipment, fixtures, fittings or services and cannot verify they are in working order or fit for their purposes. Nothing in these particulars is intended to indicate that carpets or curtains, furnishings or fittings, electrical goods (whether wired or not). Gas fires or light fittings or any other fixtures not expressly included form part of the property offered for sale. This computer generated Floorplan, if applicable, is intended as a general guide to the layout and design of the property. It is not to scale and should not be relied upon for dimensions. Tenure: We cannot confirm the tenure of the property as we have not had access to the legal documents. The buyer is advised to obtain verification from their solicitor or surveyor.

Peter Alan Limited is registered in England and Wales under company number 2073153, Registered Office is Cumbria House, 16-20 Hockliffe Street, Leighton Buzzard, Bedfordshire, LU7 1GN. VAT Registration Number is 500 2481 05. For activities relating to regulated mortgages and non-investment insurance contracts, Peter Alan Limited is an appointed representative of Connells Limited which is authorised and regulated by the Financial Conduct Authority. Connells Limited's Financial Services Register number is 302221. Most buy-to-let

