



Floral Court, Ashted

# Floral Court

Ashted

Council Tax band: D

Tenure: Share of Freehold

EPC Energy Efficiency Rating: C

EPC Environmental Impact Rating: C

- Ground Floor Apartment
- Two Double Bedrooms
- Modern Fitted Kitchen
- Open Plan Living/Dining Room
- Newly Fitted Bathroom
- Gas Central Heating
- Double Glazing
- Communal Gardens
- Residents Parking





Set within a peaceful and well-regarded cul-de-sac in Ashted, this beautifully modernised home has been thoughtfully updated by the current owners to create a stylish and effortlessly liveable space.

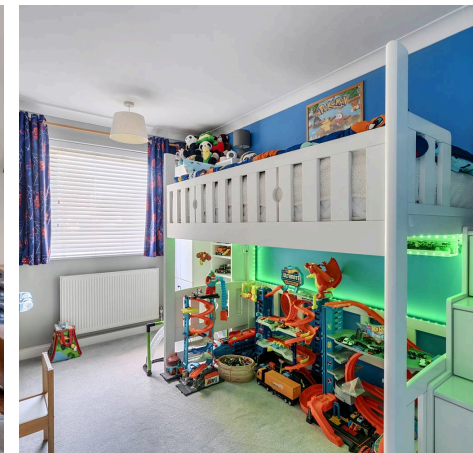
The property offers a well-balanced layout, perfectly suited to both day-to-day living and entertaining. At its heart is a contemporary kitchen, finished to a high standard with clean lines and quality fittings. The generous living room provides a bright and welcoming environment, enhanced by excellent natural light and a comfortable sense of space flowing seamlessly into a dedicated dining area.

There are two well-proportioned bedrooms, both tastefully presented, alongside a sleek and modern family bathroom that reflects the overall quality of the home's refurbishment.

Throughout, the property has been carefully improved with a keen eye for detail, resulting in a home that feels both fresh and refined, ready for immediate occupation.

Externally, the setting offers a quiet environment, ideal for those seeking a low-maintenance lifestyle within easy reach of Ashted's village amenities, transport links and open green spaces.

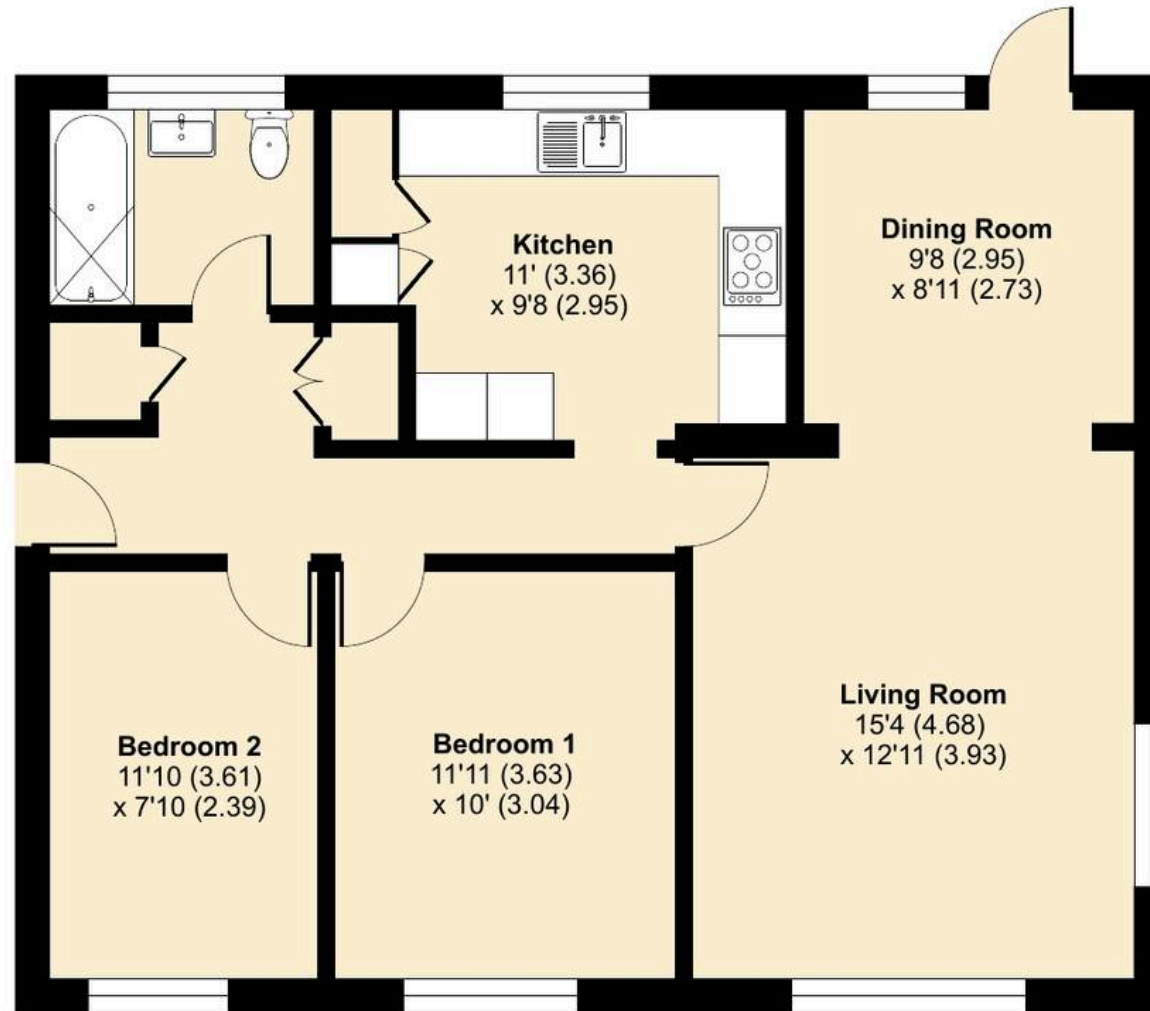
This is a superb opportunity to acquire a turnkey home in a highly desirable location, combining modern living with everyday convenience.



# Floral Court, Ashted, KT21

Approximate Area = 805 sq ft / 74.7 sq m

For identification only - Not to scale



**GROUND FLOOR**



Floor plan produced in accordance with RICS Property Measurement 2nd Edition, Incorporating International Property Measurement Standards (IPMS2 Residential). © nichecom 2026. Produced for V&H Homes. REF: 1441912

