



TO LET

19 Clover Grove, Calne, Wiltshire, SN11 8GJ

**£1,000 Per Month**



- Two bedroom home
- Long term let
- Parking for two cars
- Enclosed garden
- EPC - B
- Council Tax - C

## THE PROPERTY

Blueleaf Property are delighted to present this two bedroom home situated on the High Penn Park development by Hills Homes in Calne.

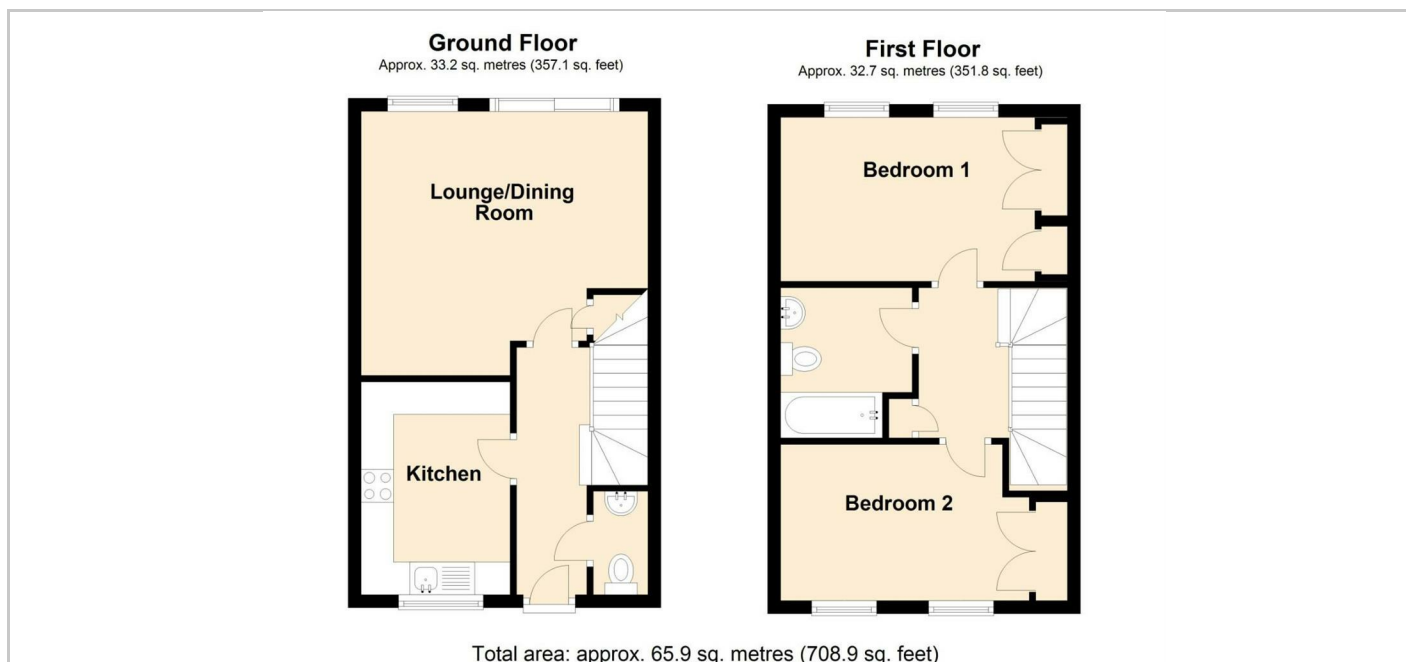
The ground floor accommodation comprises entrance hall, cloakroom, kitchen with integrated oven & hob, dishwasher, fridge and freezer, and lounge dining room with under stairs storage cupboard and patio doors leading onto the rear garden. The first floor accommodation comprises landing with storage cupboard, two double bedrooms both with fitted wardrobes and a family bathroom with shower over the bath.

The property further benefits from driveway parking for two cars, and enclosed rear garden, gas central heating and upvc double glazing.

The landlord would prefer a longer term let. Pets are not considered.

All room measurements are approx;  
 Kitchen: 2.29m x 3.27m  
 Lounge Dining Room: 4.41m x 3.72m ext 4.06m  
 Bedroom One: 3.79m x 2.52m  
 Bedroom Two: 2.39m x 3.27m ext 3.79m

## SITUATION



## Directions