



244 Stephenson Way

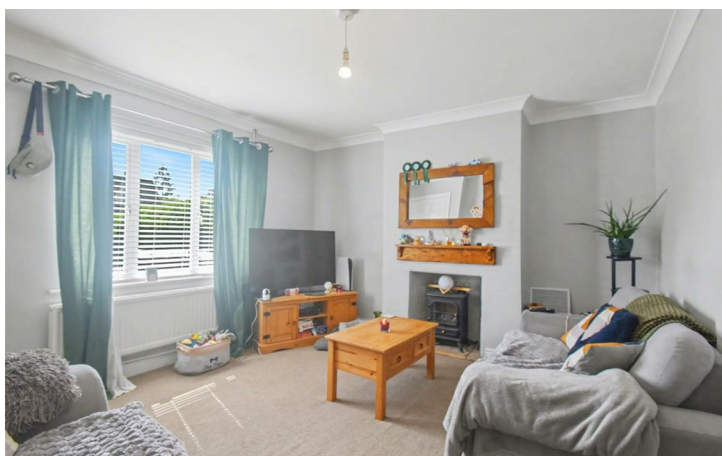
Corby, NN17 1DG



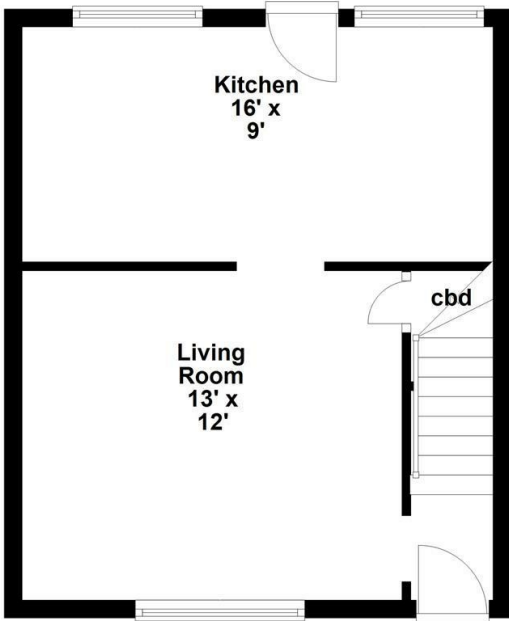
Simpson West

Simpson West are delighted to present to the market this well presented two bedroom terraced residence, situated in the ever popular Lloyds area of Corby. The property occupies a pleasant position within walking distance of local amenities, including transport links, schools, and shops. The accommodation comprises an entrance hall, a bright and spacious living room, and a kitchen/dining room featuring a brand new fitted kitchen with direct access to the rear garden. To the first floor are two well proportioned bedrooms and a newly fitted family bathroom. Externally the property benefits from a large, established rear garden, fully enclosed and complemented by a patio area ideal for outdoor entertaining. To the front, there is a generous lawned garden offering potential to create off-road parking for several vehicles (subject to the necessary permissions). Early viewing is highly recommended. Energy Rating C. Council Tax Band A.

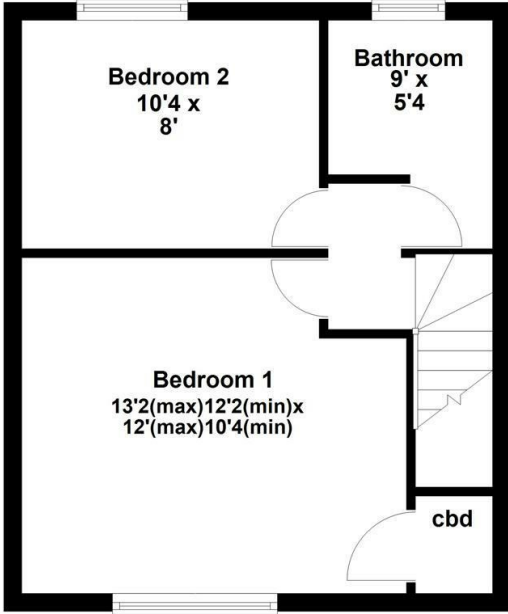
£169,950



Ground Floor



First Floor



Energy Efficiency Rating		
	Current	Potential
Very energy efficient - lower running costs		
(92 plus) A		
(81-91) B		89
(69-80) C	71	
(55-68) D		
(39-54) E		
(21-38) F		
(1-20) G		
Not energy efficient - higher running costs		
England & Wales	EU Directive 2002/91/EC	



When you buy with Simpson West, you know **you'll be in safe hands**. From the moment you walk through our doors, we'll make you **feel truly welcome**. Our sales consultants and financial advisors will take you through **every step of the process**, offering **free expert advice** along the way, from help choosing the right mortgage and insurance through to finding your conveyancer. And if you need help selling your home too, **with over 20 years of local experience, you can trust us to get you moving**.



**Simpson
West**

Making Every
Journey Personal



01536 202007

info@simpsonwest.co.uk

<https://www.simpsonwest.co.uk/>

64 Corporation Street, Corby, Northants, NN17 1NH