

Sparrows Herne Doverhay, Porlock, Somerset, TA24 8LJ

Auction Guide Price +++ £280,000



- FOR SALE BY ONLINE AUCTION
- WEDNESDAY 22ND APRIL 2026
- VIRTUAL TOUR NOW ONLINE
- VIEWINGS – REFER TO DETAILS
- DOWNLOAD FREE LEGAL PACK
- APRIL LIVE ONLINE AUCTION
- DETACHED 3 BED HOUSE
- REDUCED - WAS £420K
- COSMETIC UPDATING
- EXTENDED 8 WEEK COMPLETION

Hollis Morgan – APRIL LIVE ONLINE AUCTION - A Freehold 3 BED DETACHED HOUSE (1341 Sq Ft) with STUNNING VIEWS | REDUCED Price for Auction | Scope for COSMETIC UPDATING.

Sparrows Herne Doverhay, Porlock, Somerset, TA24 8LJ

Accommodation

FOR SALE BY LIVE ONLINE AUCTION

ADDRESS | Sparrows Herne, Doverhay, Porlock, Minehead, Somerset TA24 8LJ

Lot Number TBC

The Live Online Auction is on Wednesday 22nd April 2026 @ 12:00 Noon
Registration Deadline is on Friday 17th April 2026 @ 16:00

The Auction will be streamed LIVE ONLINE via the Hollis Morgan website & you can choose to bid by telephone, proxy or via your computer.
Registration is a simple online process – please visit the Hollis Morgan auction website and click “REGISTER TO BID”

THE PROPERTY

A Freehold 1970's detached house occupying an elevated position with charming views over Porlock Bay with the Welsh coastline in the distance. The property is well positioned for the local shops and amenities with access to the property via a quiet lane with a right of way over a gravelled parking area past the single garage with steps leading up to the property and further mature gardens to the rear. The split level accommodation (1341 Sq Ft) comprises a generous reception space designed to take full advantage of the outstanding outlook with raised dining area, kitchen, cloakroom and utility space plus 3 bedrooms and a family bathroom.
Sold with vacant possession.

Tenure - Freehold
Council Tax - E
EPC - E

THE OPPORTUNITY

COSMETIC UPDATING | EXTEND

Sparrows Herne has been a much loved home for many years but would now benefit from cometic updating with scope for a charming home or investment in this popular coastal Village.
Potential to extend the property subject to gaining the necessary consents.

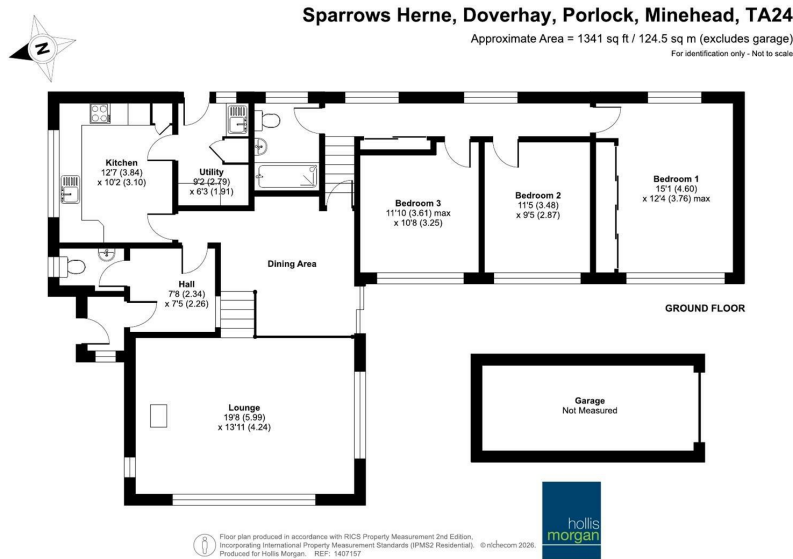
REDUCED PRICE | AUCTION

The property was previously listed with residential agents with an original asking price of £420,000 and and more recently £390,000 it now has a reduced guide price for sale by auction

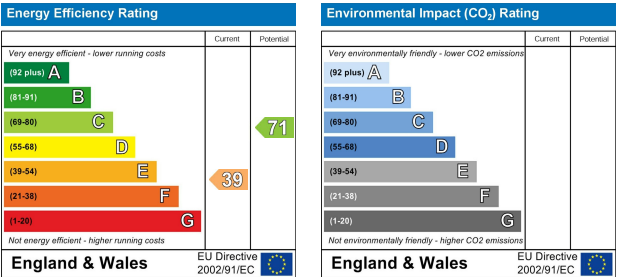
LOCATION

Porlock is a popular village with good local facilities and a thriving community within Exmoor National Park. Porlock Weir has a small harbour and is a historic trading port, neatly positioned in a sheltered area of Porlock Bay. On the doorstep lie the wide-open spaces of Exmoor, accessed by endless bridleways and footpaths beloved of walkers, horse riders, hikers and birdwatchers. Around 6.6 miles away, lies the seaside town of Minehead with its extensive sandy beaches, and a host of shopping, sporting and entertainment amenities. The County town of Taunton, which is approximately 29 miles away, has extensive retail and commercial facilities, together with access to the M5 and a mainline station with fast trains to London. There are three independent schools, a theatre and the Somerset County Cricket Ground. The M5 motorway is within easy reach, with Junction 24 at Bridgwater being 30 miles to the north east or Junction 25 at Taunton being 29 miles away.

Floor plan



EPC Chart



9 Waterloo Street

Clifton

Bristol

BS8 4BT

Tel: 0117 973 6565

Email: post@hollismorgan.co.uk

www.hollismorgan.co.uk

Hollis Morgan Property Limited, registered in England, registered 7275716.

Registered address, 5 Upper Belgrave Road, Clifton, Bristol BS8 2XQ

Auction Property Details Disclaimer

Hollis Morgan endeavour to make our sales details clear, accurate and reliable in line with the Consumer Protection from Unfair Trading Regulations 2008 but they should not be relied on as statements or representations of fact.

Please refer to our website for further details.