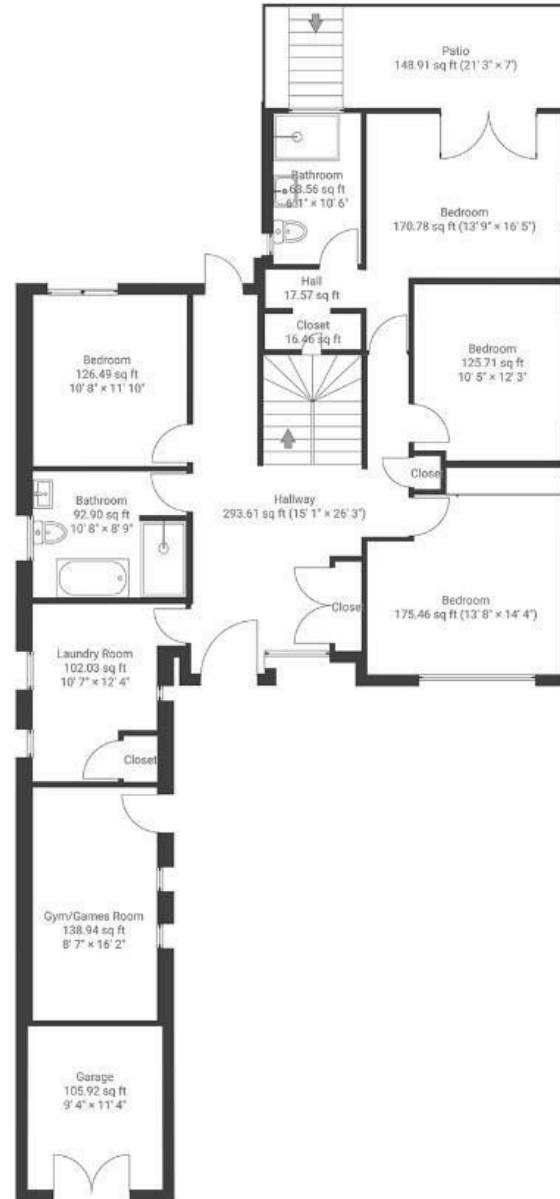


The Avenue CLEVEDON

APPROXIMATE FLOOR AREA
256 SQM / 2740 SQFT



GROUND FLOOR



FIRST FLOOR



Boardwalk

The Avenue

, CLEVEDON



£1,500,000



5 Bedrooms



BS21 7DZ



3 Bathrooms

'We love the light, space and atmosphere for entertaining friends and family, with plenty of quiet spots to retreat. The views across the channel and Welsh hills constantly change with the tide and weather with amazing sunsets from the balcony. If we could take the house with us we definitely would, as it's been a joy to create and live here'

The Architects:

'Our design set out to transform this home so that it was both a contemporary and complimentary addition to The Avenue. We had a very good working relationship with the builder who was able to construct to a very high standard. The final house has the impact we were looking for, and is a very practical home which has attracted many positive comments from neighbours and people living in the area.'

